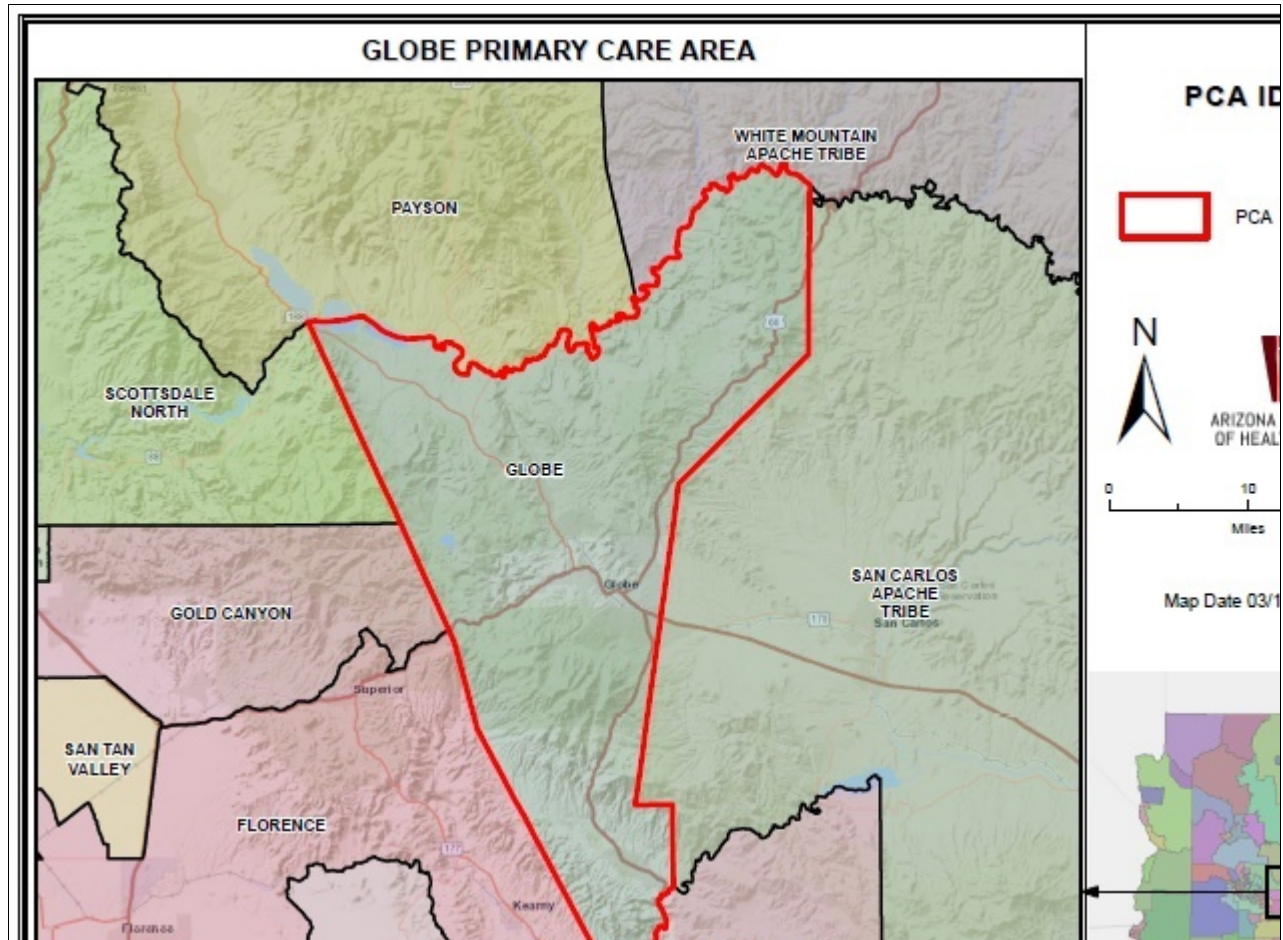


Globe Primary Care Area (PCA) 2021 STATISTICAL PROFILE

For definitions and sources of data used in these profiles, see:

<http://www.azdhs.gov/documents/prevention/health-systems-development/data-reports-maps/reports/datadocu.pdf>

DESCRIPTION OF AREA	PCA Number	24
	Major Population Center	Globe
	County	GILA
	Health Planning Region	1
	Primary Care Score	33
	Rural Code Designation:	RURAL
	Special Tax District?	No
	State House Legislative District	6, 7
	Designated as AzMUA?	Yes
	Designated as Primary Care HPSA	Geographic, (Globe)
	Designated as Federal MUA/P	50.9, MUA, (Gila County)
	Next Nearest Provider	Claypool
	2nd Nearest Provider	Miami
	Travel Distance to Next Nearest Provider	4.69 miles
	Travel Distance to 2nd Nearest Provider...	6.42 miles

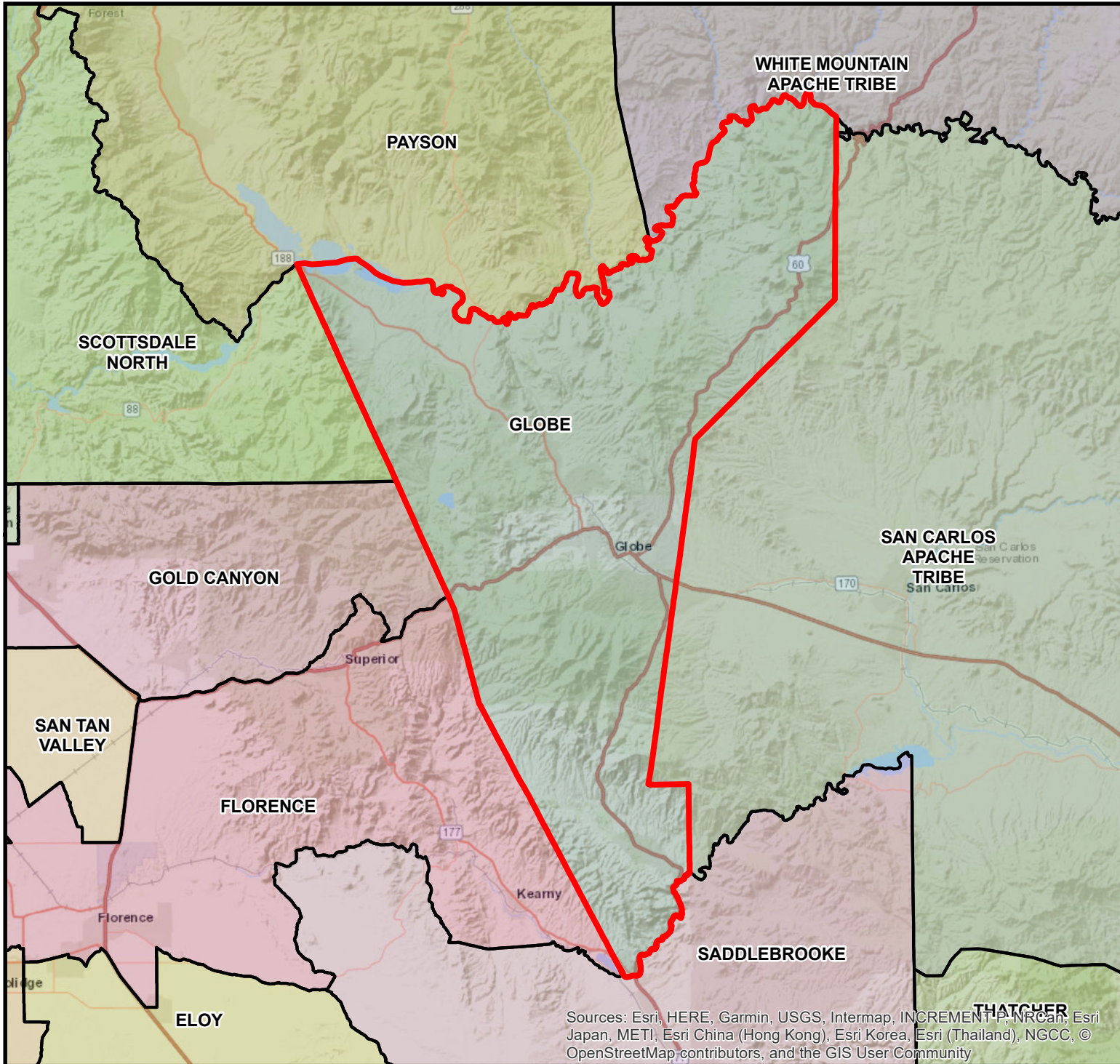


DEMOGRAPHICS	Globe	COUNTY	HEALTH PLANNING REGION	ARIZONA
POPULATION	17,741	53,525	5,000,072	7,285,370
Population Density	21.0	11.2	257.8	63.9
Persons By Age				
0-14	3,195	8,924	984,164	1,384,121
15-19	1,100	2,482	332,319	485,151
20-44	5,064	12,692	1,699,924	2,400,824
45-64	4,997	14,233	1,200,318	1,745,588
65-84	3,803	13,762	703,369	1,142,268
85 +	353	1,834	89,436	139,201
Race/Ethnicity				
White	85.9%	79.8%	75.5%	75.8%
American Indian	3.4%	14.0%	2.4%	4.0%
Black	0.8%	0.5%	5.0%	4.2%
Asian/Pacific Islander	0.8%	0.7%	3.6%	3.1%
Other	9.1%	5.0%	13.5%	12.9%
Hispanic	36.3%	17.3%	30.2%	30.5%
Communities of Color	48.4%	38.5%	46.3%	46.6%
Gender				
Females	48.8%	50.5%	50.3%	50.3%
Males	51.2%	49.5%	49.7%	49.7%
Single Parent Families	31.6%	26.5%	26.6%	26.9%
Female Headed Households	25.4%	25.2%	25.8%	26.4%
Disability Population	19.3%	21.0%	11.9%	13.2%
Speak Other Than English at Home	19.0%	16.3%	26.0%	26.7%
INCOME				
Population below 100% FPL	17.8%	19.9%	12.7%	14.1%
Population below 200% FPL	36.3%	41.7%	30.4%	33.0%
Median Household Income	\$38,355	\$39,806	\$72,322	\$62,115
Children <12 in Poverty	24.3%	36.9%	19.0%	20.7%
EDUCATION				
Less Than 9th Grade Education	11.1%	3.0%	5.1%	5.0%
9th-12th Grade, No Diploma	4.7%	9.4%	6.6%	7.0%
High School Graduate	30.0%	28.6%	23.2%	23.8%
Some College	29.8%	31.0%	24.2%	24.9%
College or Professional Degree Holder	24.2%	27.6%	40.9%	39.1%
MISCELLANEOUS				
Overnight Tourist Visits	497,631	1,490,745	20,490,645	49,599,807
Unemployed	10.9%	13.5%	8.4%	10.0%
"Uninsured" Births	1.7%	9.3%	1.9%	2.3%
Medicare Beneficiaries	98.5%	98.2%	95.9%	96.3%
Medically Uninsured	9.8%	10.0%	10.7%	10.6%
Transportation Score	113	125	107	113

RESOURCES	Globe	COUNTY	HEALTH PLANNING REGION	ARIZONA
FACILITIES				
General Hospitals	Yes	2	40	71
Hospital Beds/1000 Residents	1.4	0.9	1.8	1.9
Designated as Sole Community Provider?	Yes	2	27	56
Specialty Beds	0	0	2,873	3,645
Skilled Nursing Facilities	2	3	68	102
Nursing Beds	200	363	7,866	11,632
SERVICES				
Licensed Home Health Agencies	2	3	116	179
Ambulatory Care Sites Type	A, B, C, D	A, B, C, D, E	A, B, C, D, E	A,B,C,D,E
Licensed Pharmacies	5	11	923	1,332
Certified Ambulance Services	1	5	36	106
PERSONNEL				
Primary Care Providers	18.0	46	6,760	9,751
Ratio-Population:Provider	986 :1	1,164:1	740 :1	747 :1
Nurse Practitioners	29	81	6,649	9,932
Physician Assistants	9	21	2,419	3,049
Registered Nurses	166	476	55,813	80,111
Midwives	0	1	188	312
Dentists	2	15	3,227	4,325
UTILIZATION				
AMBULATORY CARE SENSITIVE CONDITIONS				
ACSs/1000 Residents Age <65	85.9	66.4	33.8	34.5
Points Above/Below (-) Statewide Average	51.3	31.8	-0.8	***
HOSPITALIZATION				
Inpatient Days/1000 Residents	725	762	566	570
Inpatient Days/1000 by Age Group:				
0-14 yrs	449	464	323	320
15-19 yrs	297	379	299	285
20-44 yrs	443	644	411	400
45-64 yrs	744	760	602	611
65-84 yrs	1,128	1,056	1,167	1,122
85+ yrs	2,167	1,113	1,841	1,815
Leading Diagnosis	Acute upper respiratory i			
Leading Procedure	Introduction of Serum, Toxoid and Vaccine into Muscle, P			
(Non-maternity related)				
*** Not Applicable, ++ Insufficient Data, ## Not Available				

HEALTH STATUS	Globe	COUNTY	HEALTH PLANNING REGION	ARIZONA
INFANT MORTALITY RATE	++	7.4	5.6	5.7
MORTALITY, LEADING CAUSE OF DEATH				
Infant	++			
Child (1-14)	++			
Adolescent (15-19)		Asphyxiation		
Young Adult (20-44)		Open wound of head		
Mid Age (45-64)		Chronic ischaemic heart disease		
Elderly (65-84)		Chronic ischaemic heart disease		
Aged (85+)		Cardiac arrest		
PERCENT PREMATURE MORTALITY	58.6%	57.1%	54.6%	54.9%
NATALITY				
Fertility Rate/1000 Females 15-44 yrs	69.0	64.8	61.6	61.4
Birth Rate/1000 Residents	10.0	8.7	12.3	11.8
0-4 Prenatal Care Visits/1000 Births	84.2	121.2	50.6	66.5
Prenatal Care Began:				
None	5.8%	6.2%	5.8%	5.6%
Trimester One	66.1%	61.3%	72.5%	70.4%
Trimester Two	19.3%	23.9%	16.7%	18.1%
Trimester Three	8.7%	8.5%	4.9%	5.9%
Unknown	0.1%	0.1%	0.1%	0.0%
Low-weight Births/1000 Live Births	87.3	87.6	72.3	72.8
Teen Births/1000 Females 14-19 yrs	33.2	29.0	19.7	20.2
Area Location IDs:				
Census Tracts: 040070008.00, 040070009.00, 040070010.00, 040070011.00, 040070012.00, 040070013.00				
Other Places in area:				
Bellevue, Black Rock, Burch, Central Heights, Chilito, El Capitan, Christmas, Chrysotile, Claypool, Copper City, Copper Hill, Dimario Place, Dripping Springs, Globe, Government Hill, Grapevine, Hayden, Inspiration, Little Acres, McMillianville, Miami, Midland City, Pinal, Radium, Roosevelt, Tonto, Tucker, Winkelman				
*** Not Applicable, ++ Insufficient Data, ## Not Available				

GLOBE PRIMARY CARE AREA

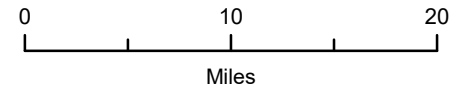


Sources: Esri, HERE, Garmin, USGS, Intermap, INCREMENT P, NRCan, Esri Japan, METI, Esri China (Hong Kong), Esri Korea, Esri (Thailand), NGCC, © OpenStreetMap contributors, and the GIS User Community

PCA ID 24



ARIZONA DEPARTMENT
OF HEALTH SERVICES



Map Date 03/14/2018

