

Melanoma Reporting in Arizona

Arizona Melanoma Task Force

No. 2024-1/ June 2024

MESSAGE FROM THE ARIZONA CANCER REGISTRY

The Arizona Cancer Registry (ACR) is pleased to announce that we have started using Web Plus for electronic melanoma reporting. Web Plus is a secure web-based portal created and maintained by the Centers for Disease Control and Prevention for cancer reporting to state registries from physician and clinic offices. To stay compliant with Arizona Revised Statute §36-133 the ACR will be transitioning any dermatology offices that report 100 or more cases a year to Web Plus before the end of 2024. Currently, Beatrice Keller Clinic, Healthy Skin, and Ironwood Dermatology are using Web Plus to complete and submit their melanoma reports to ACR. If you are interested in transitioning early please contact raeann.robinson@azdhs.gov otherwise the ACR will be contacting you in the future.



The ACR would like to invite you to join us on July 11, 2024 at 12:00p.m. for a Lunch & Learn session to hear more about Web Plus reporting for melanoma in Arizona. Please email azcancerregistry@azdhs.gov to RSVP.

RATE = Age-Adjusted Rate per 100,000 people

INFORMATION ABOUT ARIZONA MELANOMA CASES REPORTED FOR 2021



Total Invasive Melanoma Cases for 2021
3,150



Total In Situ Melanoma Cases for 2021
2,816



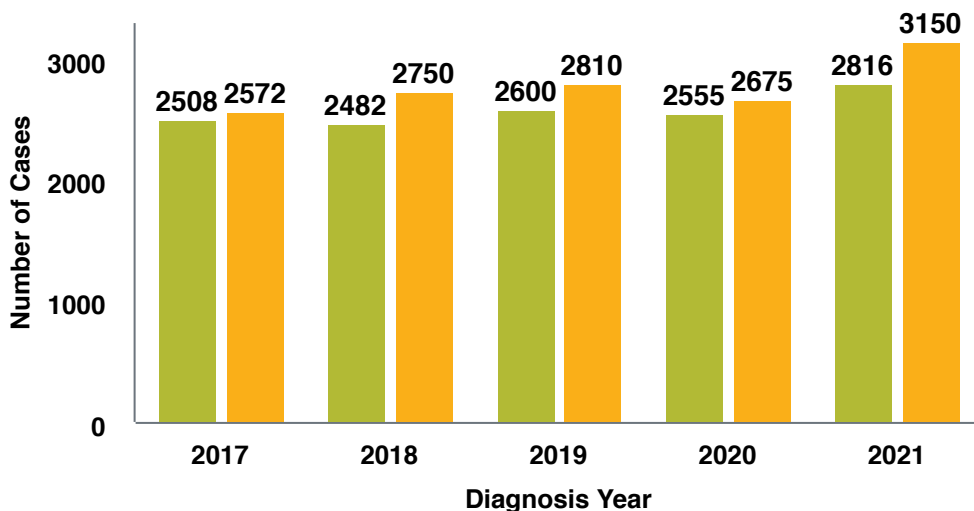
Age-Adjusted Invasive Incidence Rate for 2021
33.6
cases per 100,000 persons



Age-Adjusted Mortality Rate for 2022
2.2
deaths per 100,000 persons

2017-2021 DATA ABOUT THE NUMBER AND RATE OF MELANOMA CASES REPORTED

Figure 1: In Situ & Invasive Melanoma Case Counts by Diagnosis Year: 2017-2021



Between 2017-2021, there was a 17% increase in the number of in situ and invasive melanoma cases diagnosed in Arizona.

In Situ **Invasive**

Increasing melanoma counts and rates demonstrate the effect of improved physician reporting.

Figure 2: Percentage of All Melanomas (In Situ & Invasive) by Age & Sex: 2017-2021

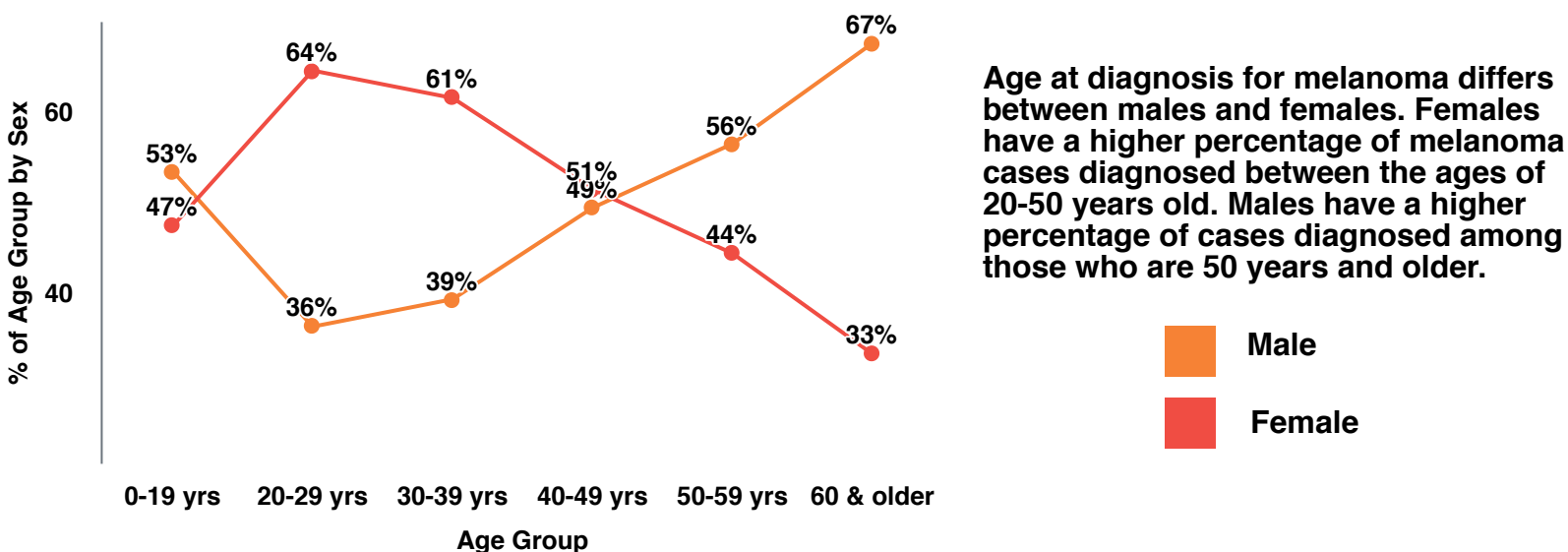


Figure 3: Arizona & United States* Invasive Melanoma Age-Adjusted Incidence Rates by Diagnosis Year, 2017-2021

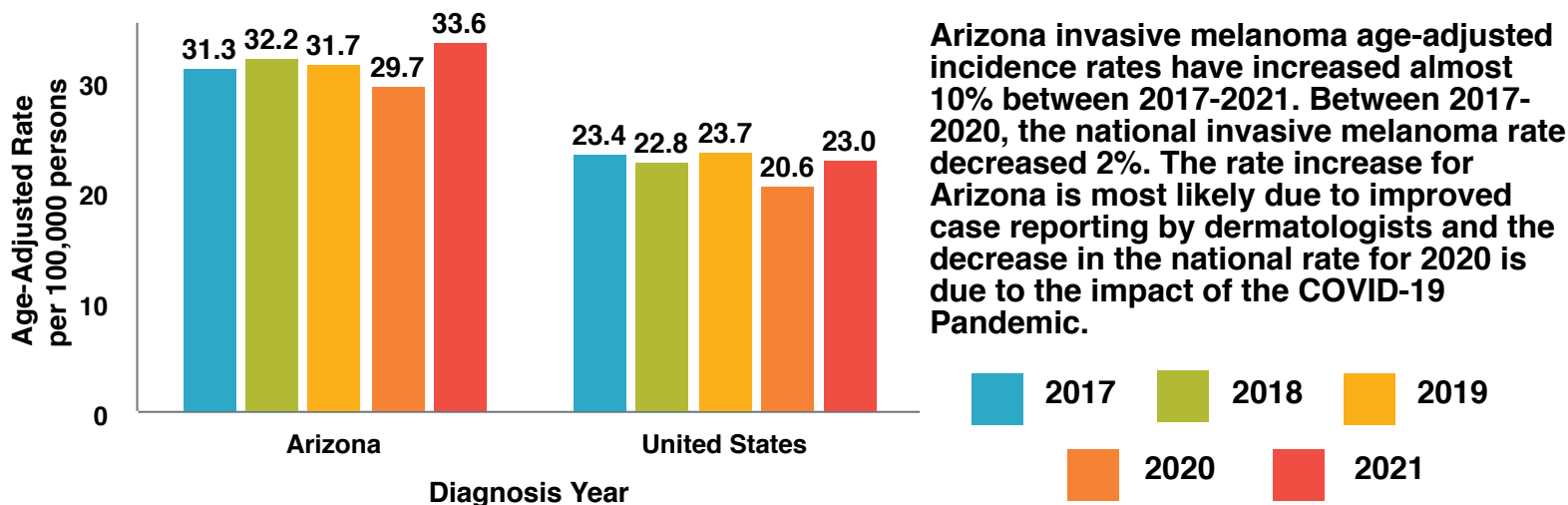


Figure 4: Percentage of Melanoma (In Situ & Invasive) Cases by Diagnosis Stage, 2017-2021

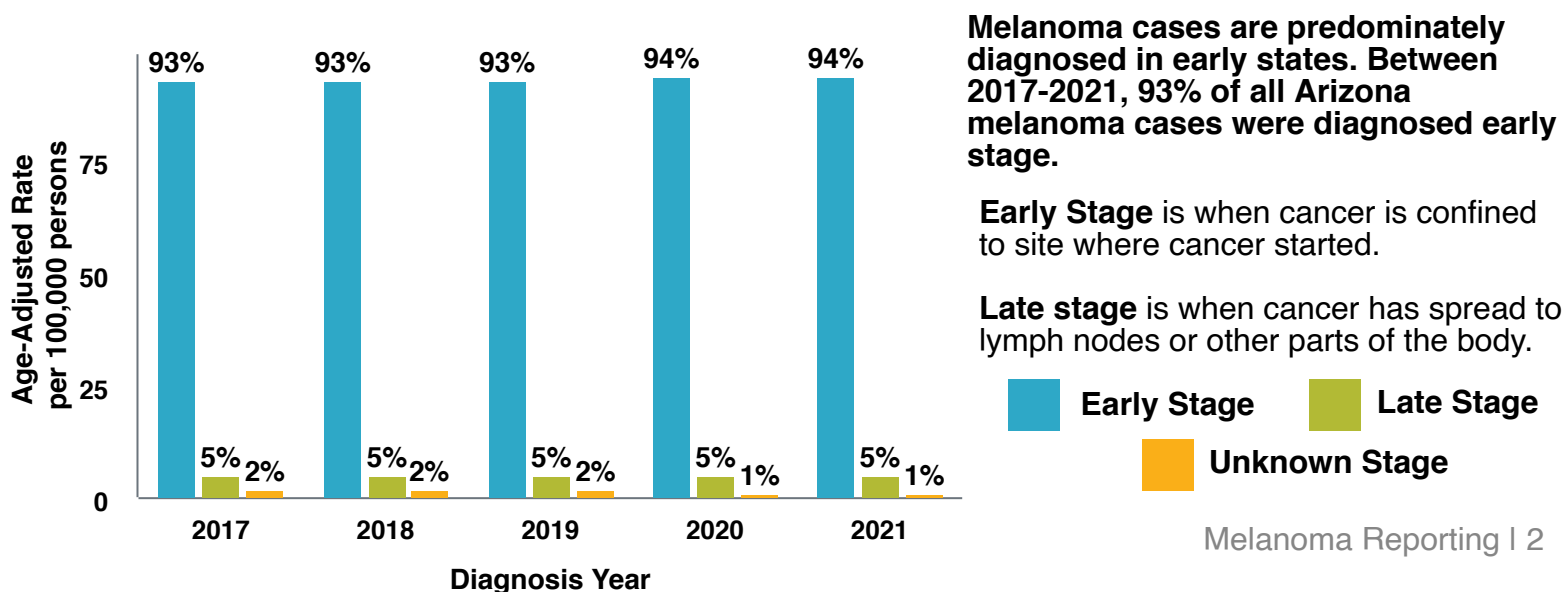
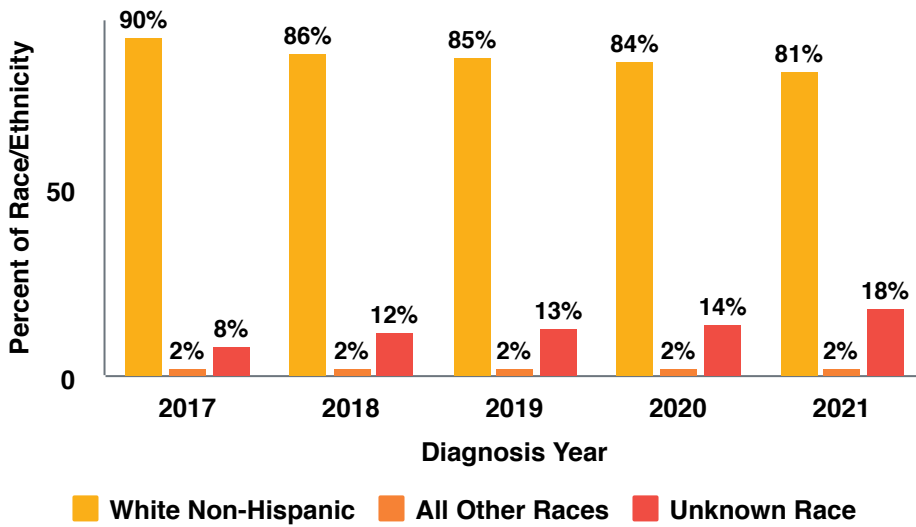


Figure 5: Percentage of Melanoma (In Situ & Invasive) by Race/Ethnicity, 2017-2021



White Non-Hispanic Arizonans make up the majority of melanoma cases in Arizona. The number of Arizona melanoma cases with an unknown race/ethnicity has increased 172% between 2017-2021. In 2021, 18% of all melanoma cases had race/ethnicity documented as unknown/missing.

Please make additional efforts to accurately document a patient's race/ethnicity. This information is used to understand and address health disparities in melanoma diagnosis and survivorship.



Figure 6: Arizona Age-Adjusted Melanoma Incidence Rates by County, 2017-2021



The counties with the highest rates are Yavapai, Pima and Maricopa County.



The counties with the lowest rates are Yuma, Apache and Greenlee county.

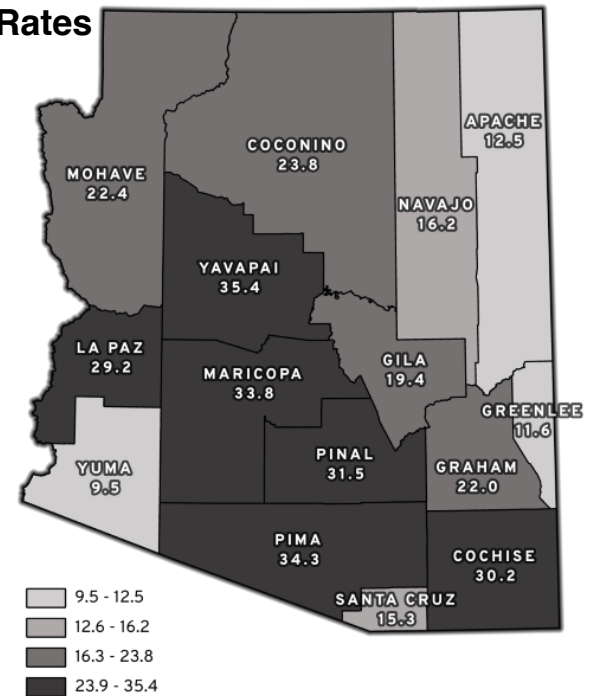
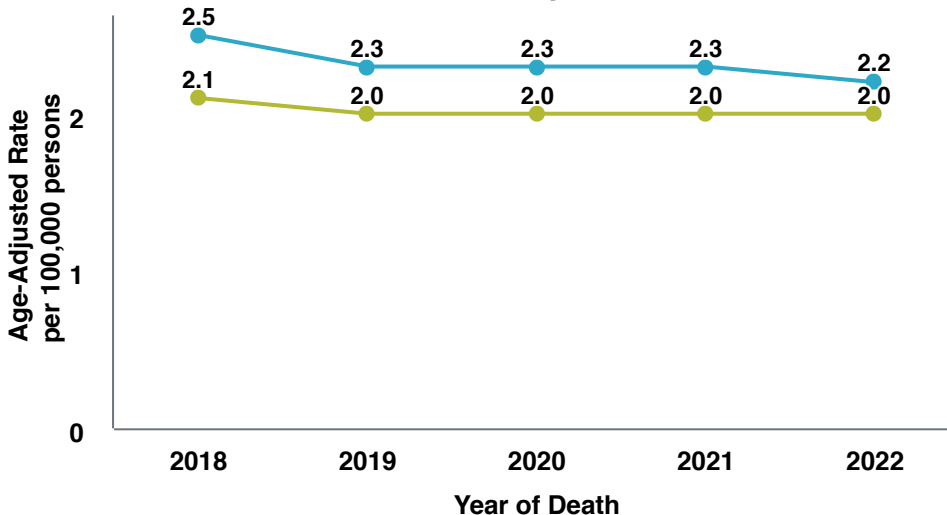


Figure 7: Arizona & United States* Melanoma Age-Adjusted Mortality Rates by Year of Death, 2018-2022



The Arizona melanoma mortality age-adjusted rate has decreased 12% from 2018-2022. The national melanoma mortality rate decreased 5% from 2018-2022.

Arizona United States

Page 4 includes overall numbers about the 2023 melanoma reports submitted by physician offices to the Arizona Cancer Registry. The physician list starts on page 8 and is not included in the web version of this report. The list is grouped by Phoenix Area, Tucson Area and the rest of the state. The list does not contain physician names where a hospital cancer registry reports their cases. If your name is not listed, the Arizona Cancer Registry has not received reports for 2023 from your office. If the number of reports does not appear accurate for your office, or if you have questions about reporting, please contact Raeann Robinson (raeann.robinson@azdhs.gov) for more information.

Reporting Physician

IMPORTANT POINTS ABOUT COMPLETING THE MELANOMA REPORT FORM



In order to compile accurate case counts by physician, it is important to complete the Reporting Physician name located on the top of the form. This helps us to maintain accurate counts for this newsletter as well as on the patient record.

2023 INFORMATION ABOUT THE NUMBER OF MELANOMA REPORTS SUBMITTED BY PHYSICIAN OFFICES



Total Number of Physicians Reporting 2023 Melanoma Cases

414



Phoenix Area

Total Number of 2023 Melanoma Physician Reports Submitted

4,251



Tucson Area

Total Number of 2023 Melanoma Physician Reports Submitted

1,699



Rest of the State

Total Number of 2023 Melanoma Physician Reports Submitted

955

Nurse Practitioners Reported

9%

Physician Assistants Reported

24%

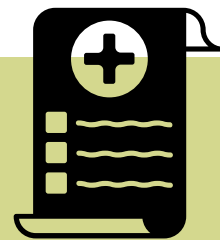
Doctors of Osteopathic Medicine (DO) Reported

13%

Doctors of Medicine (MD) Reported

54%

OF ALL MELANOMA 2023 CASES IN ARIZONA



NOTES ABOUT THE LISTING OF PHYSICIAN CASES:



Reference date of list is 04/15/2024.



All providers involved with a melanoma case are required by Arizona regulation to report any melanoma case that is not referred to a hospital for diagnosis and/or treatment.



The 2023 number of reports identified in the table above and in the following listing may include non-reportable (e.g., atypical melanocytic dysplasia) cases and/or duplicate reporting. These cases have not been through the quality controlled process. Once the quality control process is initiated non-reportables will be eliminated and the case reports will be matched to the registry database to identify potential duplicates. If duplicates are identified we will use the information reported to consolidate into one "best record" so that each diagnosed melanoma is counted only once for incidence.

***Data source for graphs that contain U.S. incidence and mortality data:** U.S. Cancer Statistics Working Group. U.S. Cancer Statistics Data Visualizations Tool. U.S. Department of Health and Human Services, Centers for Disease Control and Prevention and National Cancer Institute; <https://www.cdc.gov/cancer/dataviz>, released in June 2024.

Data source for graphs that contain Arizona mortality data: Arizona Department of Health Services, Arizona Vital Statistics, 2024. Retrieved June 10, 2024.

Data source for graphs that contain cancer Arizona incidence data: Arizona Department of Health Services, Arizona Cancer Registry, 2024. Retrieved May 28, 2024.

The Centers for Disease Control and Prevention (CDC) provide support to the Arizona Cancer Registry under Cooperative Agreement NU58DP007089 (National Program of Cancer Registries Component). The contents of this report are solely the responsibility of the authors and do not necessarily represent the official views of the Centers for Disease Control and Prevention.

Note: The impact of the **COVID-19 Pandemic** on patients with cancers and cancer data reporting is reflected in the data available for 2020, and possibly 2021. Fluctuations in cancer incidence and mortality rates may be due to delays in diagnosis, lack of screening, disruption of patient treatment and follow-up care, and unforeseen health complications due to contracting COVID-19. On a national scale, our standard setters, North American Association of Central Cancer Registries (NAACCR) and Centers for Disease Control and Prevention National Program of Cancer Registries (CDC NPCR), will be implementing a "self-correcting" adjustment for the diagnosis year 2020 due to the pandemic.

Note: To ensure accuracy and consistency the Arizona Cancer Registry produces age-adjusted rates using the Surveillance, Epidemiology, and End Results Program (SEER) population denominators based on the most current Census data.

Note: The Arizona Cancer Registry database is dynamic, meaning that numbers are updated frequently for any diagnosis year. Previous reports may reflect different numbers due to these updates.

Forms for melanoma reporting can be found at: azhealth.gov/melanomaform

Check out the latest melanoma information at: azhealth.gov/cancerregistry

ANNOUNCEMENTS AND RESOURCES

INTERESTED IN JOINING THE MELANOMA TASK FORCE?

The Melanoma Task Force is seeking new physician members to assist in the work of this task force and to ensure physician practices are truly reflected in the statistics for Arizona. The goal of the task force is to improve the melanoma reporting process in Arizona.

The task force commitment is bi-monthly virtual meetings and to assist with continued engagement of physician reporting. Please refer to the Arizona Melanoma Task Force Information Sheet for additional information.

Please contact Georgia Yee if interested, georgia.yee@azdhs.gov.

UPCOMING: THE ARIZONA CANCER CONTROL PLAN

This summer the new 2024-2029 Arizona Cancer Control Plan will be published on the ADHS website. The plan includes goals, objectives and strategies aimed to reduce the cancer burden in Arizona by improving diagnostic and treatment outcomes for cancer patients and survivors.

The Melanoma Task Force contributed to the plan by creating an objective to reduce the percentage of late stage melanoma diagnoses in Arizona within the next 5 years.

Purpose of the Arizona Melanoma Task Force



The mission of the Arizona Melanoma Task Force is to enhance melanoma reporting to the Arizona Cancer Registry and promote use of registry data and control of skin cancer.

ARIZONA CANCER REGISTRY DATA DASHBOARD

The Arizona Cancer Registry data dashboard contains Arizona cancer data from 1995 through 2020 with the ability to search for counts and age-adjusted rates by diagnosis year, cancer site, age, gender, race/ethnicity and county.

 **TAKE A LOOK AT
THE DASHBOARD**