

Arizona Medical Marijuana Program January 2020 Monthly Report

In December 2010, Arizona voters passed the Arizona Medical Marijuana Act (AMMA), A.R.S. §36-2801 *et seq.* The AMMA went into effect on April 14, 2011, making Arizona the fourteenth state to adopt a medical marijuana law. The AMMA designates the Arizona Department of Health Services (ADHS) as the licensing and issuing authority for the Arizona Medical Marijuana Program.

The AMMA monthly report highlights the most current program statistics. This includes data on active medical marijuana cardholders as well as transaction data from the sale of medical marijuana at non-profit medical marijuana dispensaries. Tables 1 through 6 and Figures 1 through 3 reflect data that are point-in-time. Table 7 and Figure 4 are data from the month of January, 2020. The Year-To-Date section which follows shows cumulative applications and approvals for 2020. For further information and statistics, please reference the Arizona Medical Marijuana Annual Report.

Table 1. Arizona Medical Marijuana Active Qualifying Patients, Designated Caregivers and Dispensary Agents Profile

Active Cardholder's Profile	Totals	Percent Total
1. Qualifying patients (QPs)	223,285	96.70%
2. Caregivers (CGs)	735	0.32%
3. Dispensary Agents (DA)	6,872	2.98%
Total	230,892	100.00%

*Note: For caregivers and dispensary agents, these data reflect unique individuals, not the number of cards.

Table 2. Arizona Medical Marijuana Active Qualifying Patients Profile

Application profile of qualifying patients	Totals	Percent Total
1. New applications	129,428	57.96%
2. Renewal applications	85,589	38.33%
3. Changed demographics	3,727	1.67%
4. Added Caregivers	191	0.09%
5. Change Dup	4,334	1.94%
6. Replaced Caregivers	15	0.01%
7. Removed Caregivers	1	0.00%
Total	223,285	100.00%

Approximately 11 percent (n = 25,891) of the active cardholders were determined to be SNAP eligible. Of the 25,891 that were determined to be eligible, 13,366 (~52%) were females and 12,525 (~48%) were males.

Table 3. Arizona Medical Marijuana Active Qualifying Patients Characteristics

Characteristics of Active Cardholders who are Qualified Patients	Totals (N =223,285)	Percent Total
Patient Age-groups		
Less than 18 years	183	0.08%
18 to 30 years	55,032	24.65%
31 to 40 years	47,782	21.40%
41 to 50 years	36,035	16.14%
51 to 60 years	34,383	15.40%
61 to 70 years	35,243	15.78%
71 to 80 years	12,594	5.64%
81 and older	2,033	0.91%
Patient Gender		
Male	132,527	59.35%
Female	90,758	40.65%

Figure 1. Arizona Medical Marijuana Active Qualifying Patients Characteristics by Gender and Age (N = 223,285)

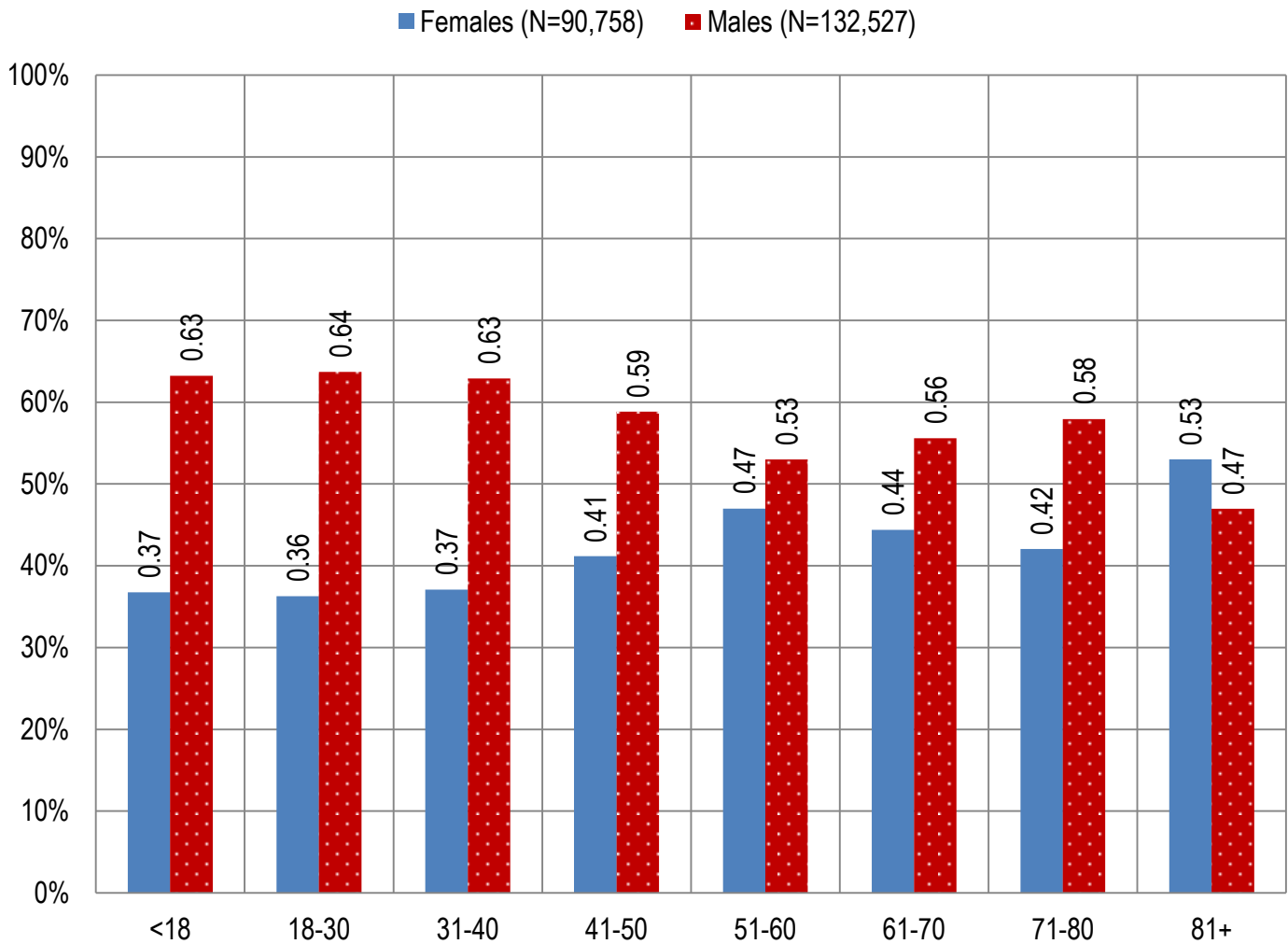


Table 4. Arizona Medical Marijuana Active Qualifying Patients Medical Condition Profile

Patient medical condition profile of Active Cardholders [¶]	Totals	Percent Total
Alzheimer's	85	0.04%
Cachexia	119	0.05%
Cancer	3,981	1.78%
Chronic Pain	200,188	89.66%
Crohn's Disease	623	0.28%
Glaucoma	1,097	0.49%
Hepatitis C	635	0.28%
HIV/AIDS	747	0.33%
Muscle Spasms	859	0.38%
Nausea	854	0.38%
Post-Traumatic Stress Disorder (PTSD)	2,600	1.16%
Sclerosis	33	0.01%
Seizures	1,188	0.53%
Two Or More Conditions	10,276	4.60%
TOTAL	223,285	100.00%

[¶]Unique debilitating conditions

Figure 2. Arizona Medical Marijuana Active Designated Caregiver Characteristics by Gender and Age (N = 735)

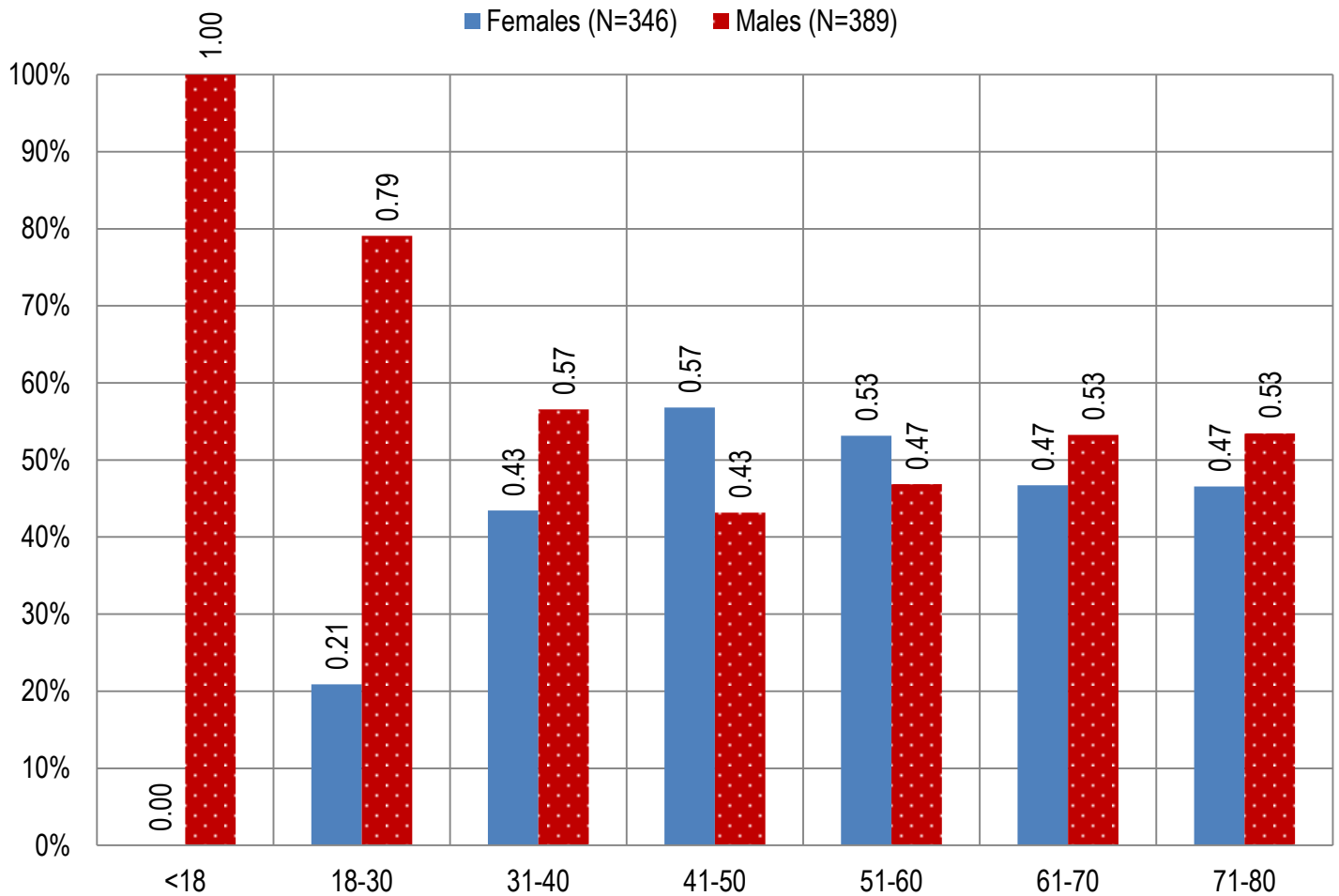


Table 5. Arizona Medical Marijuana Active Qualifying Patients and Designated Caregivers Authorized for Cultivation

Active cardholders cultivation status	Totals	Percent Total
Qualifying patients (n =223,285)	2,459	1.10%
Caregivers (n =735)	268	36.46%

Table 6. Frequency of Qualifying Patients, Caregivers, and Dispensary Agents by County of Residence

County	Qualifying Patients	Caregivers	Dispensary Agents*
Apache County	899	Count under 20	29
Cochise County	3,221	Count under 20	223
Coconino County	4,383	24	142
Gila County	2,010	Count under 20	42
Graham County	915	Count under 20	Count under 20
Greenlee County	240	Count under 20	Count under 20
La Paz County	350	Count under 20	Count under 20
Maricopa County	145,810	404	4,144
Mohave County	5,112	Count under 20	210
Navajo County	2,637	Count under 20	395
Pima County	30,450	132	691
Pinal County	13,641	35	259
Santa Cruz County	676	Count under 20	184
Yavapai County	11,051	52	425
Yuma County	1,890	Count under 20	Count under 20
TOTAL	223,285	735	6,872

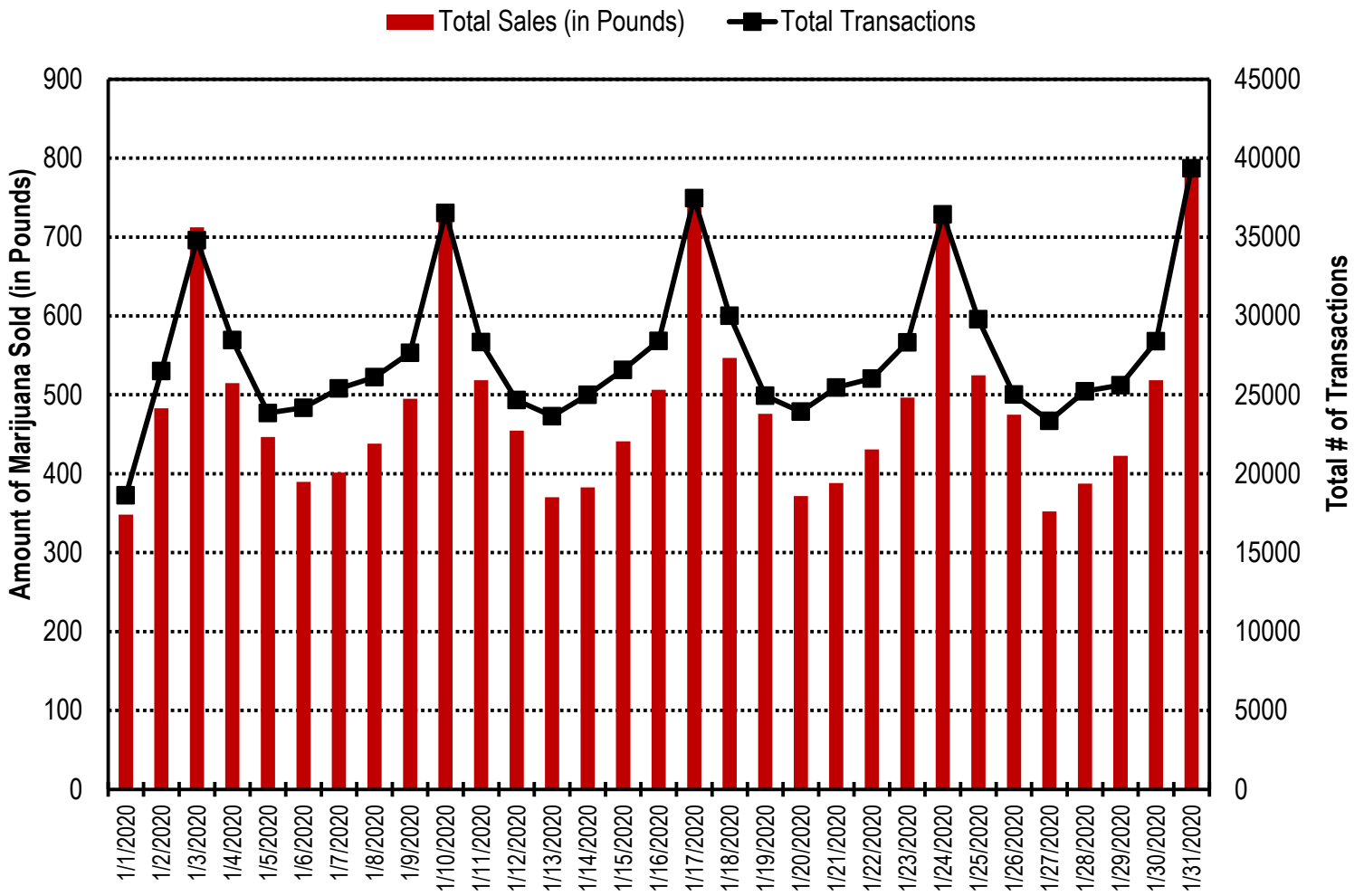
* 89 Dispensary Agents are located outside of Arizona.

Table 7. Type and Amount of Transactions at Medical Marijuana Dispensaries in January 2020

Type of Transaction [†]	Ounces (oz.)	Pounds
Marijuana	222,514.21	13,907.14
Marijuana Edible	7,024.15	439.01
Marijuana Other	15,299.36	956.21
Total Marijuana Sold	244,837.71	15,302.36

[†] Amounts have been rounded and may not added to exact totals

Figure 4. Daily Transactions and Amount of Marijuana Sold in January, 2020



YEAR TO DATE

Table 1a. Arizona Medical Marijuana Applications Received- Application Profile

Applications Received Cardholder Profile	Totals	Percent Total
Qualifying patients (QPs)	20,428	95.41%
Caregivers (CGs)	79	0.37%
Dispensary Agents (DA)	904	4.22%
Total	21,411	100.00%

*Note: For caregivers and dispensary agents, these data reflect unique individuals, not the number of cards.

Table 1b. Arizona Medical Marijuana Licensed Qualifying Patients, Designated Caregivers and Dispensary Agents Profile

Applications Approved Cardholder Profile	Totals	Percent Total
Qualifying patients (QPs)	19,721	95.98%
Caregivers (CGs)	57	0.28%
Dispensary Agents (DA)	770	3.75%
Total	20,548	100.00%

*Note: For caregivers and dispensary agents, these data reflect unique individuals, not the number of cards.

Table 2. Arizona Medical Marijuana Licensed Qualifying Patient Profile

Applications Approved for Qualifying Patients	Totals	Percent Total
New applications	11,280	57.20%
Renewal applications	8,133	41.24%
Changed demographics	144	0.73%
Added Caregivers	19	0.10%
Change Dup	145	0.74%
Replaced Caregivers	0	0.00%
Removed Caregivers	0	0.00%
Total	19,721	100.00%

Table 3a. Arizona Medical Marijuana Applications Received- Patient Characteristics

Characteristics of Applications Received who are Qualified Patients	Totals (N = 20,428)	Percent Total
Patient Age-groups		
Less than 18 years	14	0.07%
18 to 30 years	5,566	27.25%
31 to 40 years	4,298	21.04%
41 to 50 years	3,123	15.29%
51 to 60 years	3,086	15.11%
61 to 70 years	3,148	15.41%
71 to 80 years	1,061	5.19%
81 and older	132	0.65%
Patient Gender		
Male	12,022	58.85%
Female	8,406	41.15%

Table 3b. Arizona Medical Marijuana Licensed Qualifying Patient Characteristics

Characteristics of Approved Applications who are Qualified Patients	Totals (N = 19,721)	Percent Total
Patient Age-groups		
Less than 18 years	8	0.04%
18 to 30 years	5,391	27.34%
31 to 40 years	4,144	21.01%
41 to 50 years	2,994	15.18%
51 to 60 years	2,985	15.14%
61 to 70 years	3,043	15.43%
71 to 80 years	1,029	5.22%
81 and older	127	0.64%
Patient Gender		
Male	11,608	58.86%
Female	8,113	41.14%

Figure 1a. Arizona Medical Marijuana Applications Received- Patient Characteristics by Gender and Age

(N =20,428)

■ Females (N=8,406) ■ Males (N=12,022)

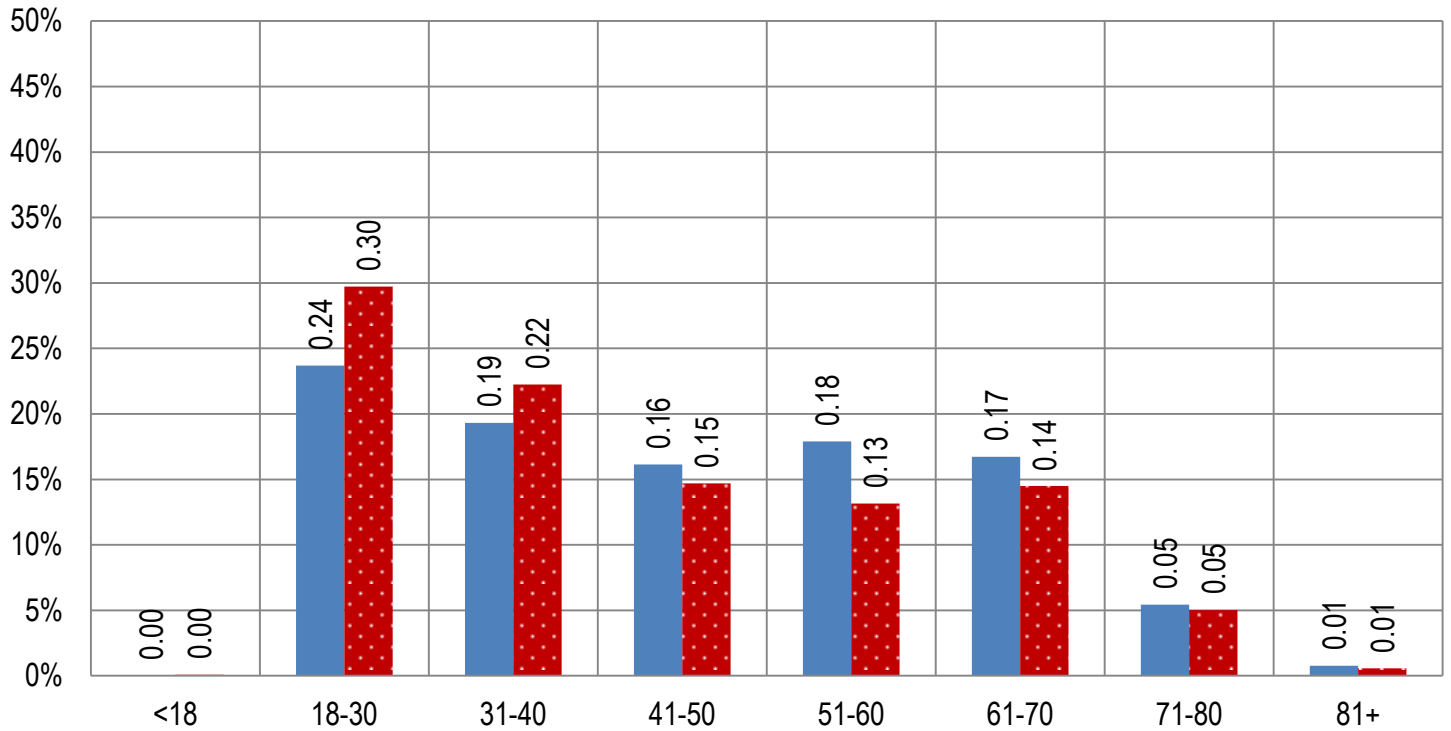


Figure 1b. Arizona Medical Marijuana Licensed Qualifying Patient Characteristics by Gender and Age

(N =19,721)

■ Females (N=8,113) ■ Males (N=11,608)

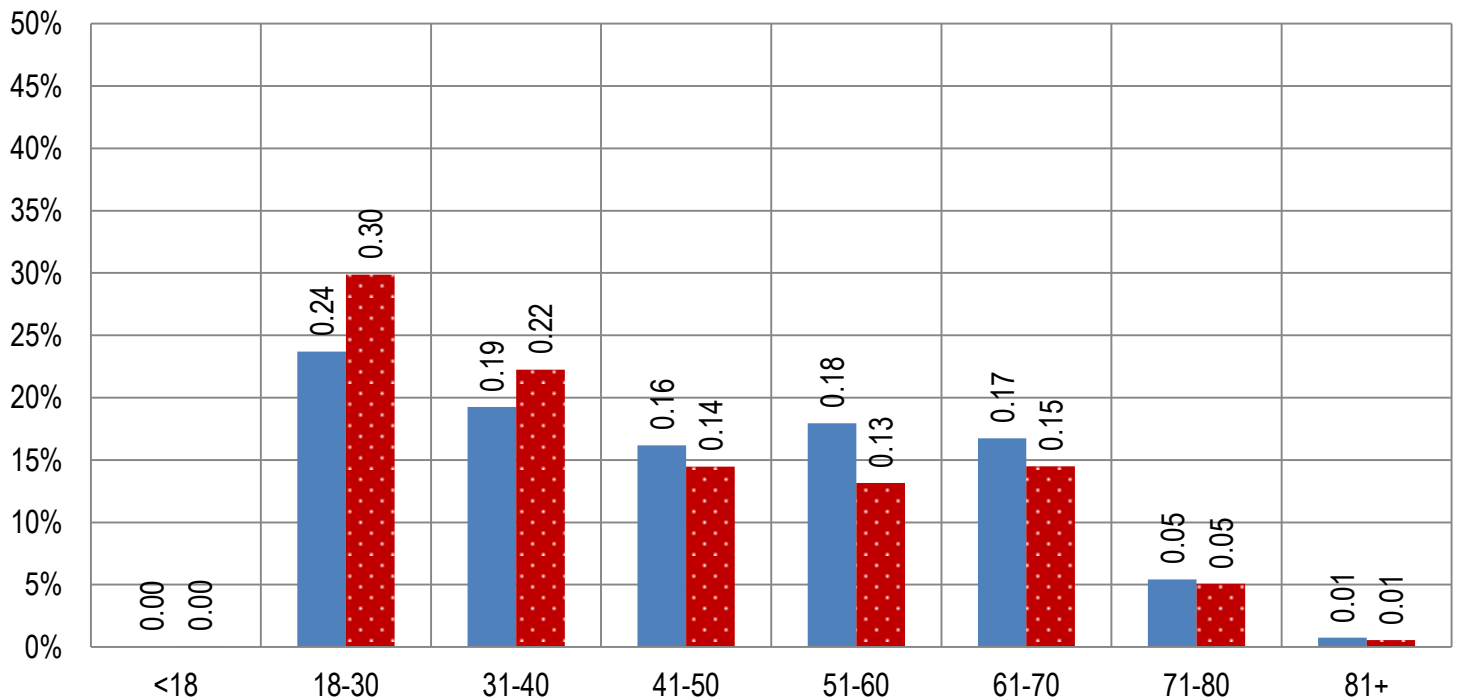


Figure 2a. Arizona Medical Marijuana Applications Received- Caregivers Characteristics by Gender and Age

(N = 79)

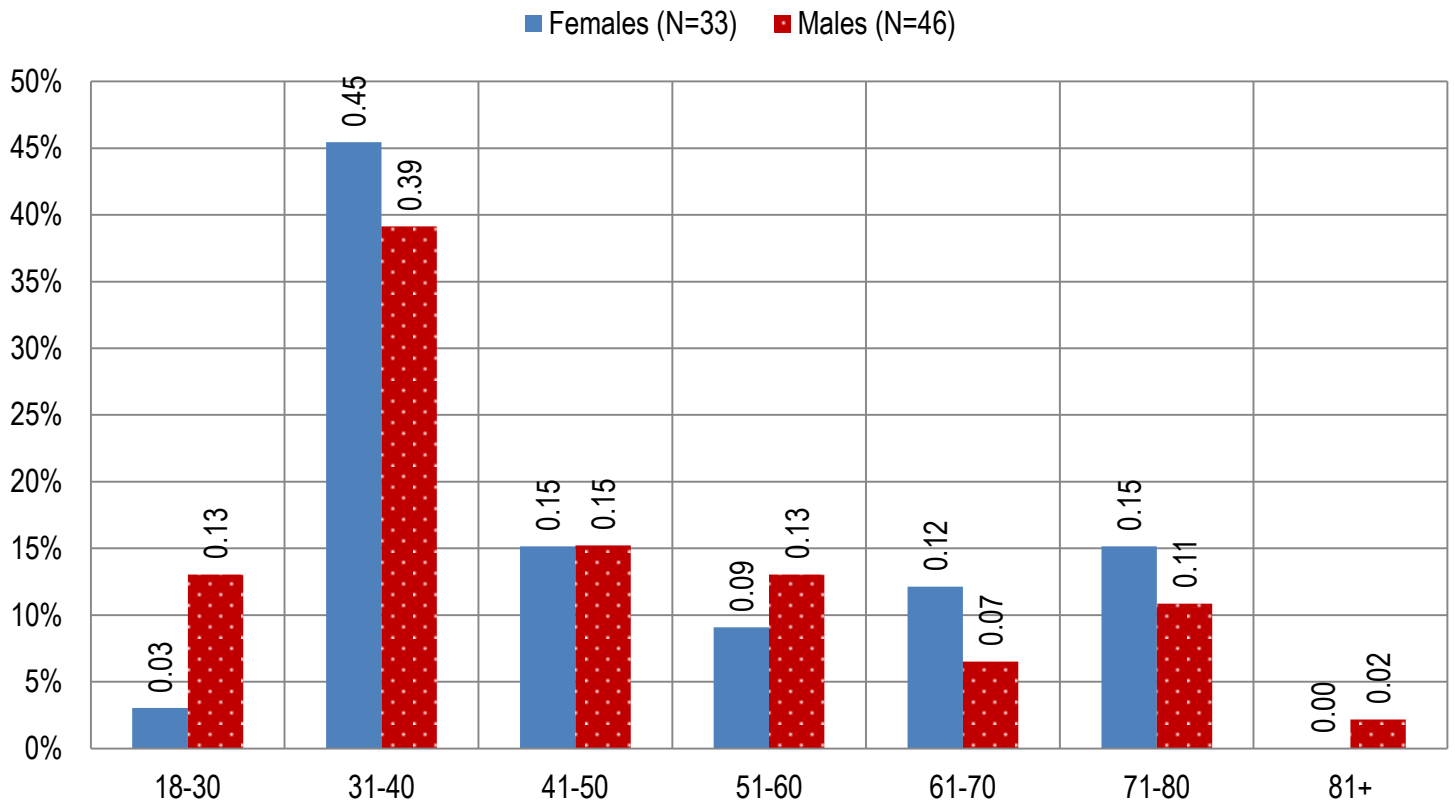


Figure 2b. Arizona Medical Marijuana Licensed Caregivers Characteristics by Gender and Age

(N = 57)

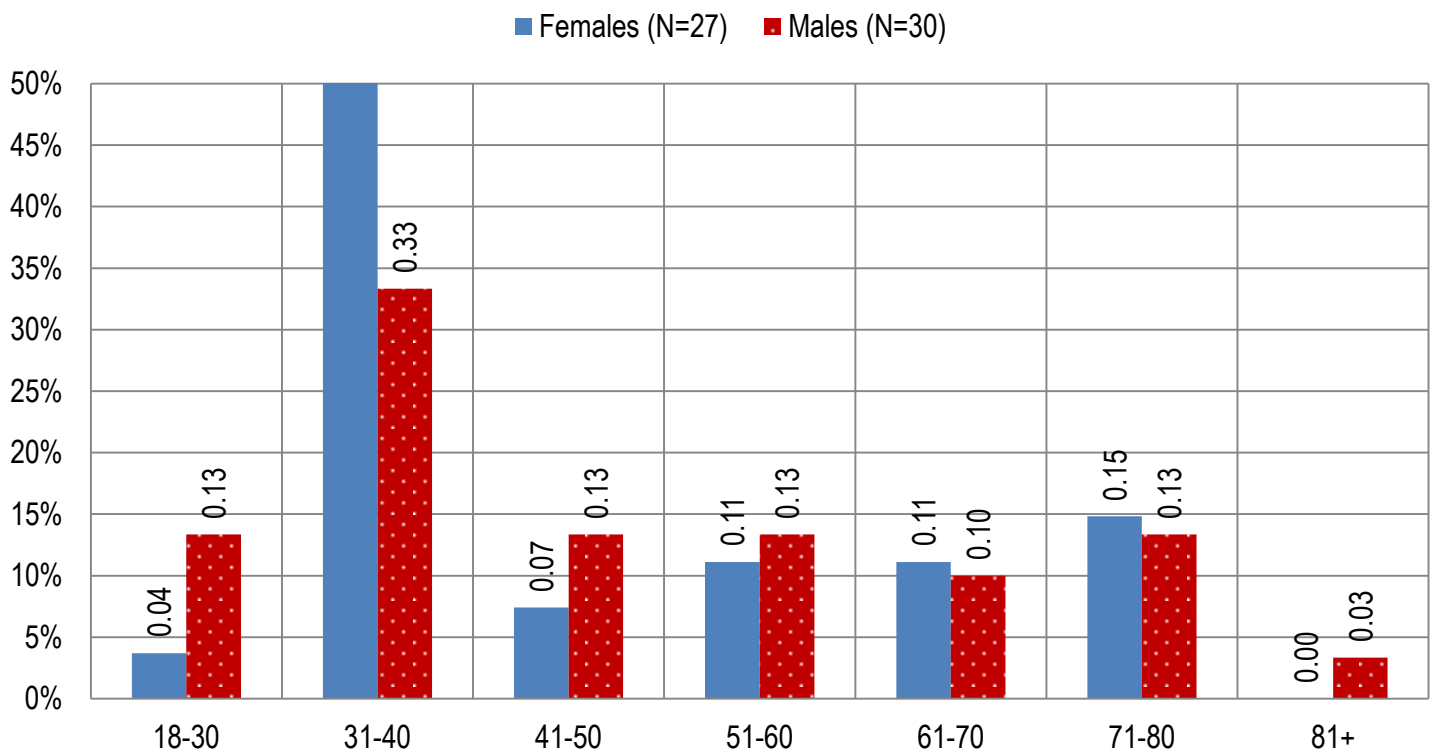


Table 4a. Arizona Medical Marijuana Applications Received- Patient Medical Conditions Profile

Patient medical condition profile of Applications Received [¶]	Totals	Percent Total
Alzheimer's	9	0.04%
Cachexia	11	0.05%
Cancer	318	1.56%
Chronic Pain	18,489	90.51%
Crohn's Disease	43	0.21%
Glaucoma	99	0.48%
Hepatitis C	55	0.27%
HIV/AIDS	69	0.34%
Muscle Spasms	65	0.32%
Nausea	59	0.29%
Post-Traumatic Stress Disorder (PTSD)	257	1.26%
Sclerosis	3	0.01%
Seizures	95	0.47%
Two Or More Conditions	856	4.19%
TOTAL	20,428	100.00%

[¶]Unique debilitating conditions

Table 4b. Arizona Medical Marijuana Licensed Qualifying Patients Medical Conditions Profile

Patient medical condition profile of Applications Approved [¶]	Totals	Percent Total
Alzheimer's	8	0.04%
Cachexia	11	0.06%
Cancer	302	1.53%
Chronic Pain	17,882	90.67%
Crohn's Disease	43	0.22%
Glaucoma	95	0.48%
Hepatitis C	53	0.27%
HIV/AIDS	66	0.33%
Muscle Spasms	63	0.32%
Nausea	58	0.29%
Post-Traumatic Stress Disorder (PTSD)	243	1.23%
Sclerosis	3	0.02%
Seizures	92	0.47%
Two Or More Conditions	802	4.07%
TOTAL	19,721	100.00%

[¶]Unique debilitating conditions

Table 5a. Arizona Medical Marijuana Applications Received for Applicants Seeking Authorization to Cultivate

Applications Received for cardholders with cultivation status	Totals	Percent total
Qualifying patients (n = 20,428)	203	0.99%

Table 5b. Arizona Medical Marijuana Licensed Qualifying Patients and Designated Caregivers Authorized for Cultivation

Approved cardholders cultivation status	Totals	Percent total
Qualifying patients (n = 19,721)	203	1.03%

Table 7a. Type and Amount of Transactions at Medical Marijuana Dispensaries in 2020 to Date

Type of Transaction [†]	Ounces (oz.)	Pounds
Marijuana	222,514.21	13,907.14
Marijuana Edible	7,024.15	439.01
Marijuana Other	15,299.36	956.21
Total Marijuana Sold	244,837.71	15,302.36

[†] Amounts have been rounded and may not added to exact totals

Figure 5. Transactions and Amount of Marijuana Sold in 2020 by Month

