

Arizona Medical Marijuana Program February 2020 Monthly Report

In December 2010, Arizona voters passed the Arizona Medical Marijuana Act (AMMA), A.R.S. §36-2801 *et seq.* The AMMA went into effect on April 14, 2011, making Arizona the fourteenth state to adopt a medical marijuana law. The AMMA designates the Arizona Department of Health Services (ADHS) as the licensing and issuing authority for the Arizona Medical Marijuana Program.

The AMMA monthly report highlights the most current program statistics. This includes data on active medical marijuana cardholders as well as transaction data from the sale of medical marijuana at non-profit medical marijuana dispensaries. Tables 1 through 6 and Figures 1 through 3 reflect data that are point-in-time. Table 7 and Figure 4 are data from the month of February, 2020. The Year-To-Date section which follows shows cumulative applications and approvals for 2020. For further information and statistics, please reference the Arizona Medical Marijuana Annual Report.

Table 1. Arizona Medical Marijuana Active Qualifying Patients, Designated Caregivers and Dispensary Agents Profile

Active Cardholder's Profile	Totals	Percent Total
1. Qualifying patients (QPs)	226,677	96.72%
2. Caregivers (CGs)	711	0.30%
3. Dispensary Agents (DA)	6,965	2.97%
Total	234,353	100.00%

*Note: For caregivers and dispensary agents, these data reflect unique individuals, not the number of cards.

Table 2. Arizona Medical Marijuana Active Qualifying Patients Profile

Application profile of qualifying patients	Totals	Percent Total
1. New applications	132,061	58.26%
2. Renewal applications	86,961	38.36%
3. Changed demographics	3,562	1.57%
4. Added Caregivers	193	0.09%
5. Change Dup	3,887	1.71%
6. Replaced Caregivers	12	0.01%
7. Removed Caregivers	1	0.00%
Total	226,677	100.00%

Approximately 11 percent (n = 26,398) of the active cardholders were determined to be SNAP eligible. Of the 26,398 that were determined to be eligible, 13,645 (~52%) were females and 12,753 (~48%) were males.

Table 3. Arizona Medical Marijuana Active Qualifying Patients Characteristics

Characteristics of Active Cardholders who are Qualified Patients	Totals (N =226,677)	Percent Total
Patient Age-groups		
Less than 18 years	177	0.08%
18 to 30 years	56,274	24.83%
31 to 40 years	48,738	21.50%
41 to 50 years	36,530	16.12%
51 to 60 years	34,584	15.26%
61 to 70 years	35,562	15.69%
71 to 80 years	12,754	5.63%
81 and older	2,058	0.91%
Patient Gender		
Male	134,494	59.33%
Female	92,183	40.67%

Figure 1. Arizona Medical Marijuana Active Qualifying Patients Characteristics by Gender and Age (N = 226,677)

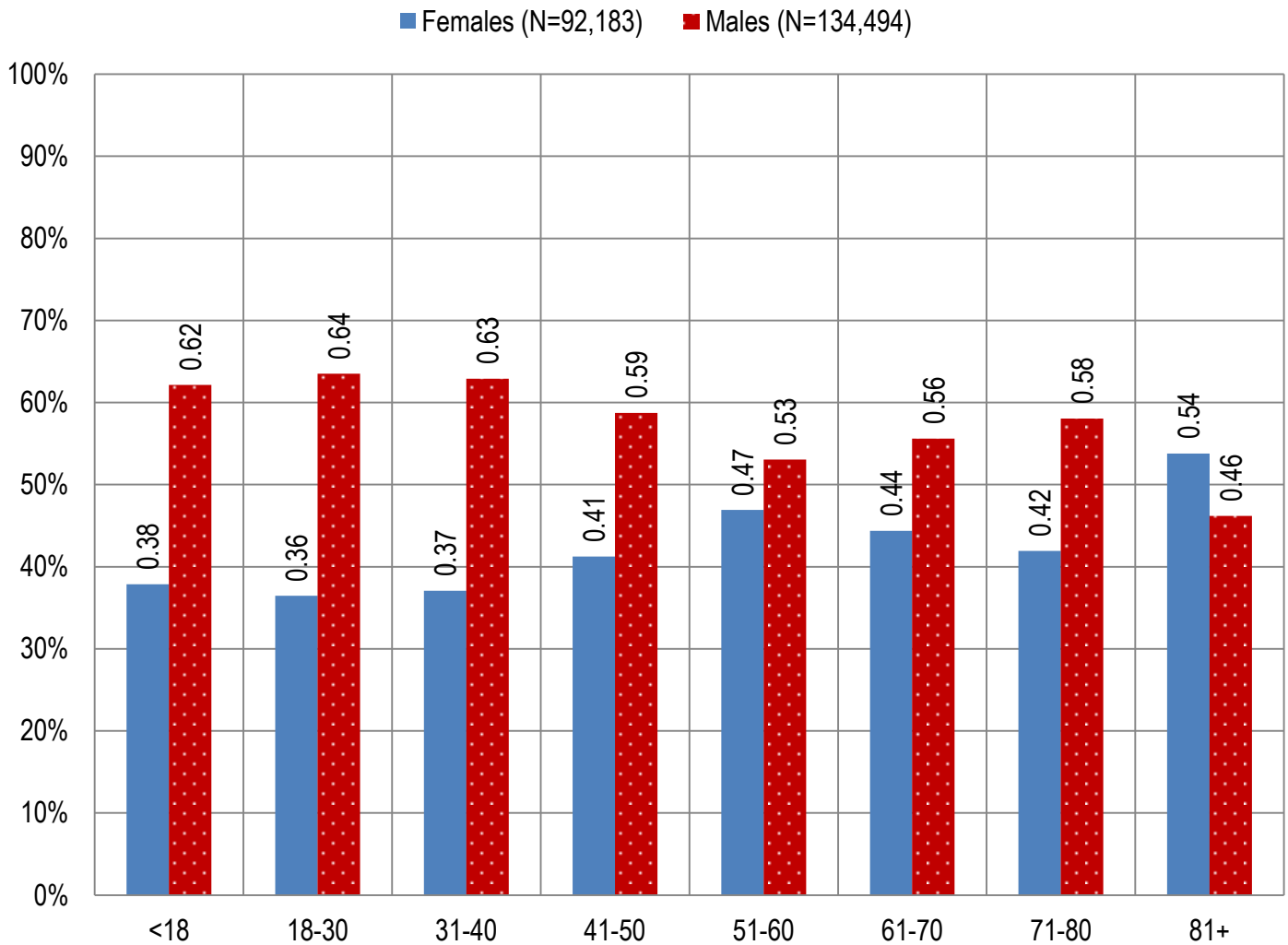


Table 4. Arizona Medical Marijuana Active Qualifying Patients Medical Condition Profile

Patient medical condition profile of Active Cardholders [¶]	Totals	Percent Total
Alzheimer's	80	0.04%
Cachexia	118	0.05%
Cancer	3,951	1.74%
Chronic Pain	203,584	89.81%
Crohn's Disease	621	0.27%
Glaucoma	1,093	0.48%
Hepatitis C	624	0.28%
HIV/AIDS	745	0.33%
Muscle Spasms	847	0.37%
Nausea	866	0.38%
Post-Traumatic Stress Disorder (PTSD)	2,601	1.15%
Sclerosis	34	0.01%
Seizures	1,195	0.53%
Two Or More Conditions	10,318	4.55%
TOTAL	226,677	100.00%

[¶]Unique debilitating conditions

Figure 2. Arizona Medical Marijuana Active Designated Caregiver Characteristics by Gender and Age (N = 711)

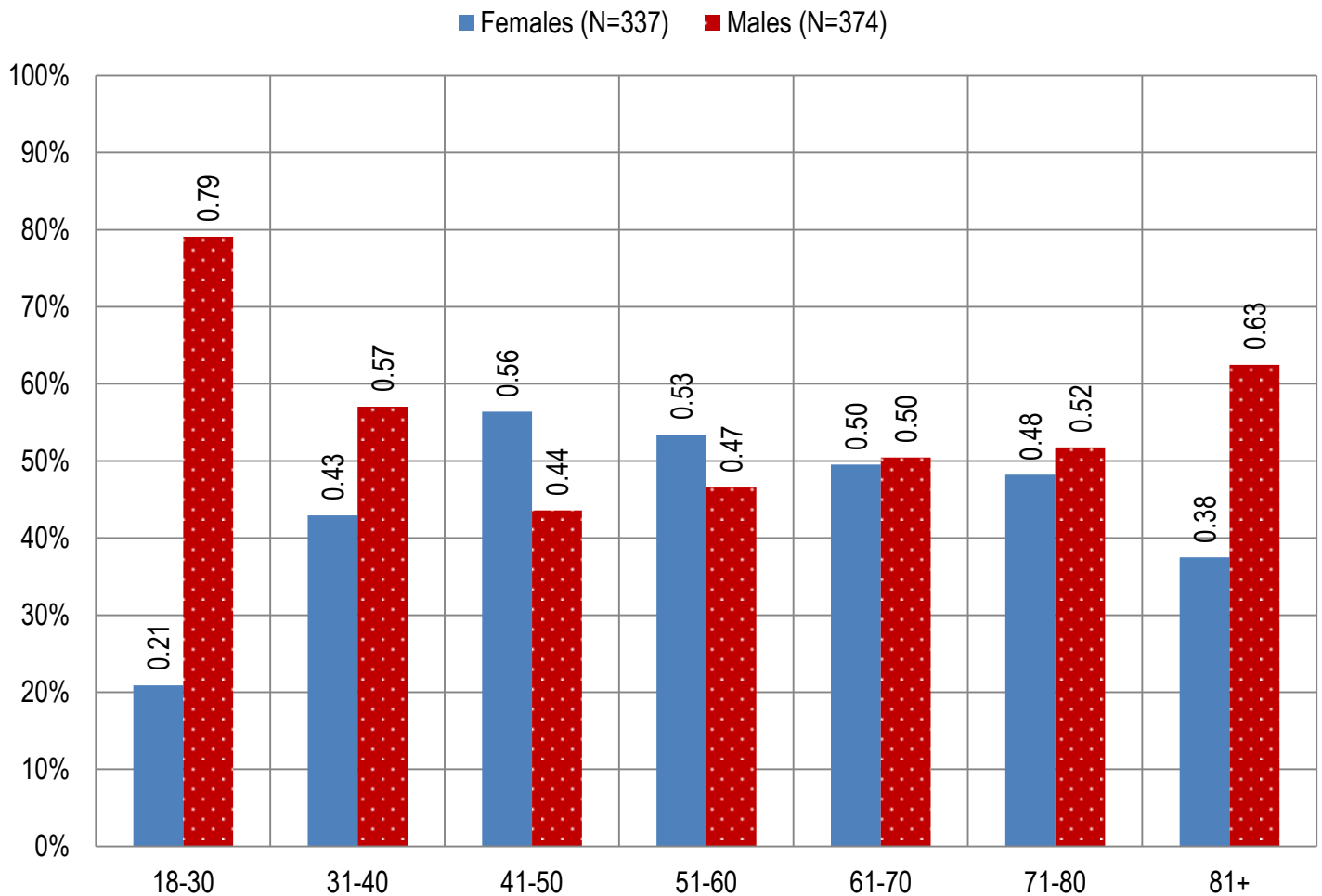


Table 5. Arizona Medical Marijuana Active Qualifying Patients and Designated Caregivers Authorized for Cultivation

Active cardholders cultivation status	Totals	Percent Total
Qualifying patients (n =226,677)	2,518	1.11%
Caregivers (n =711)	258	36.29%

Table 6. Frequency of Qualifying Patients, Caregivers, and Dispensary Agents by County of Residence

County	Qualifying Patients	Caregivers	Dispensary Agents*
Apache County	912	Count under 20	30
Cochise County	3,293	Count under 20	216
Coconino County	4,426	23	147
Gila County	2,047	Count under 20	45
Graham County	929	Count under 20	Count under 20
Greenlee County	243	Count under 20	Count under 20
La Paz County	343	Count under 20	Count under 20
Maricopa County	148,022	397	4,207
Mohave County	5,227	Count under 20	208
Navajo County	2,702	Count under 20	431
Pima County	30,867	125	686
Pinal County	13,840	31	254
Santa Cruz County	681	Count under 20	193
Yavapai County	11,204	50	419
Yuma County	1,941	Count under 20	Count under 20
TOTAL	226,677	711	6,965

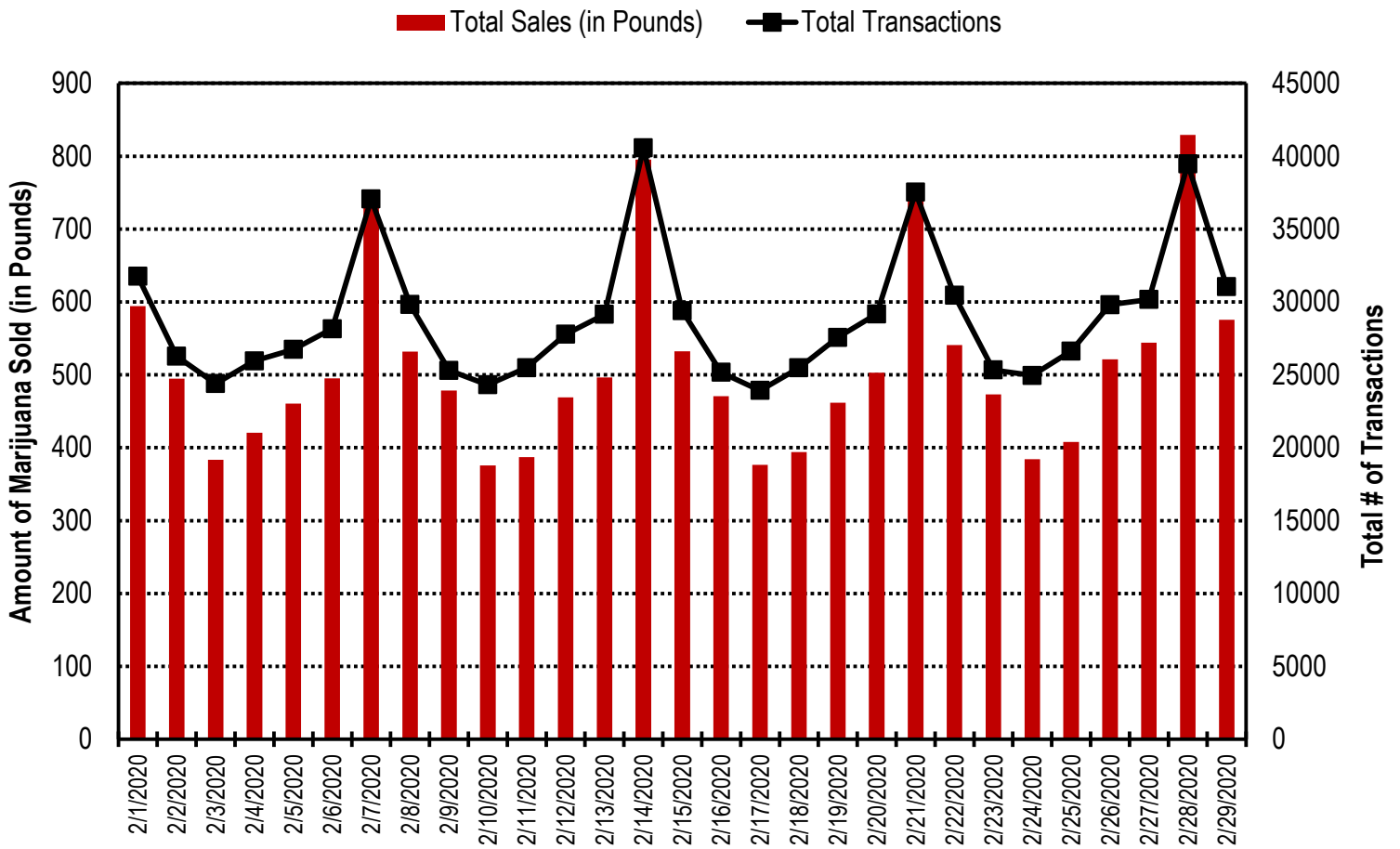
* 85 Dispensary Agents are located outside of Arizona.

Table 7. Type and Amount of Transactions at Medical Marijuana Dispensaries in February 2020

Type of Transaction [†]	Ounces (oz.)	Pounds
Marijuana	214,157.74	13,384.86
Marijuana Edible	7,335.58	458.47
Marijuana Other	16,689.94	1,043.12
Total Marijuana Sold	238,183.26	14,886.45

[†] Amounts have been rounded and may not added to exact totals

Figure 4. Daily Transactions and Amount of Marijuana Sold in February, 2020



YEAR TO DATE

Table 1a. Arizona Medical Marijuana Applications Received- Application Profile

Applications Received Cardholder Profile	Totals	Percent Total
Qualifying patients (QPs)	41,604	95.26%
Caregivers (CGs)	179	0.41%
Dispensary Agents (DA)	1,891	4.33%
Total	43,674	100.00%

*Note: For caregivers and dispensary agents, these data reflect unique individuals, not the number of cards.

Table 1b. Arizona Medical Marijuana Licensed Qualifying Patients, Designated Caregivers and Dispensary Agents Profile

Applications Approved Cardholder Profile	Totals	Percent Total
Qualifying patients (QPs)	40,005	95.49%
Caregivers (CGs)	147	0.35%
Dispensary Agents (DA)	1,742	4.16%
Total	41,894	100.00%

*Note: For caregivers and dispensary agents, these data reflect unique individuals, not the number of cards.

Table 2. Arizona Medical Marijuana Licensed Qualifying Patient Profile

Applications Approved for Qualifying Patients	Totals	Percent Total
New applications	23,191	57.97%
Renewal applications	16,225	40.56%
Changed demographics	261	0.65%
Added Caregivers	41	0.10%
Change Dup	286	0.71%
Replaced Caregivers	1	0.00%
Removed Caregivers	0	0.00%
Total	40,005	100.00%

Table 3a. Arizona Medical Marijuana Applications Received- Patient Characteristics

Characteristics of Applications Received who are Qualified Patients	Totals (N = 41,604)	Percent Total
Patient Age-groups		
Less than 18 years	31	0.07%
18 to 30 years	11,634	27.96%
31 to 40 years	9,094	21.86%
41 to 50 years	6,380	15.34%
51 to 60 years	6,017	14.46%
61 to 70 years	6,121	14.71%
71 to 80 years	2,045	4.92%
81 and older	282	0.68%
Patient Gender		
Male	24,515	58.92%
Female	17,089	41.08%

Table 3b. Arizona Medical Marijuana Licensed Qualifying Patient Characteristics

Characteristics of Approved Applications who are Qualified Patients	Totals (N = 40,005)	Percent Total
Patient Age-groups		
Less than 18 years	21	0.05%
18 to 30 years	11,130	27.82%
31 to 40 years	8,683	21.70%
41 to 50 years	6,131	15.33%
51 to 60 years	5,821	14.55%
61 to 70 years	5,970	14.92%
71 to 80 years	1,979	4.95%
81 and older	270	0.67%
Patient Gender		
Male	23,655	59.13%
Female	16,350	40.87%

Figure 1a. Arizona Medical Marijuana Applications Received- Patient Characteristics by Gender and Age

(N =41,604)

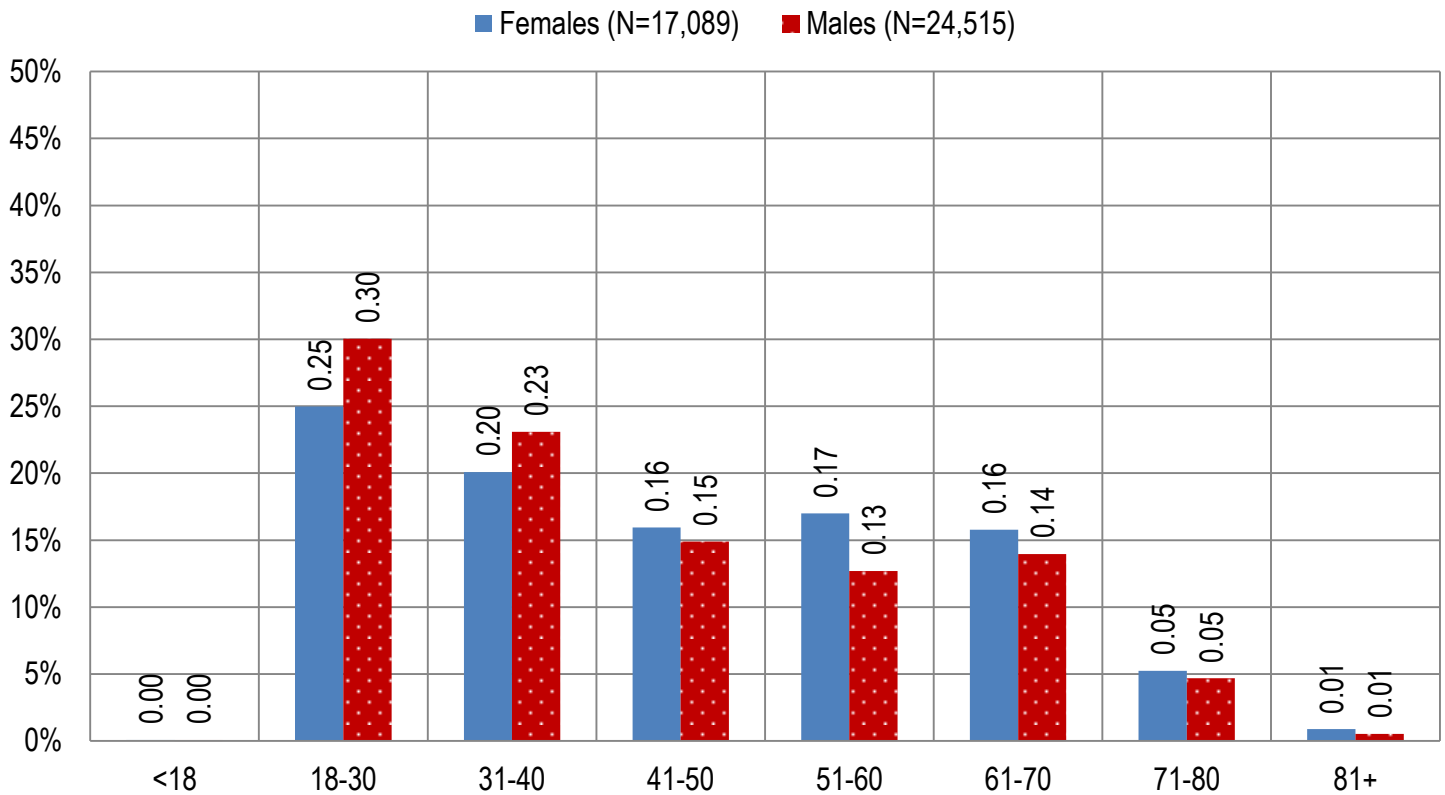


Figure 1b. Arizona Medical Marijuana Licensed Qualifying Patient Characteristics by Gender and Age

(N =40,005)

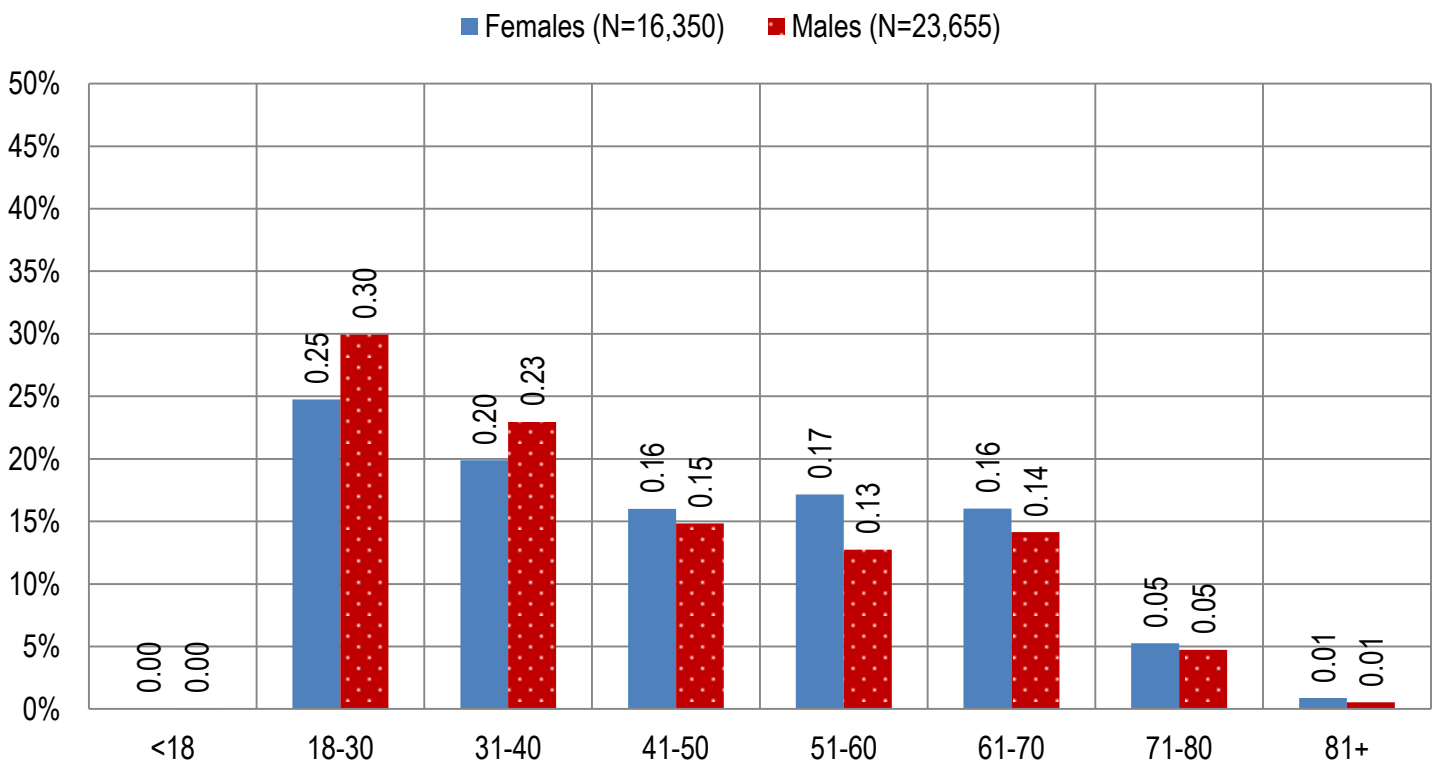


Figure 2a. Arizona Medical Marijuana Applications Received- Caregivers Characteristics by Gender and Age

(N = 179)

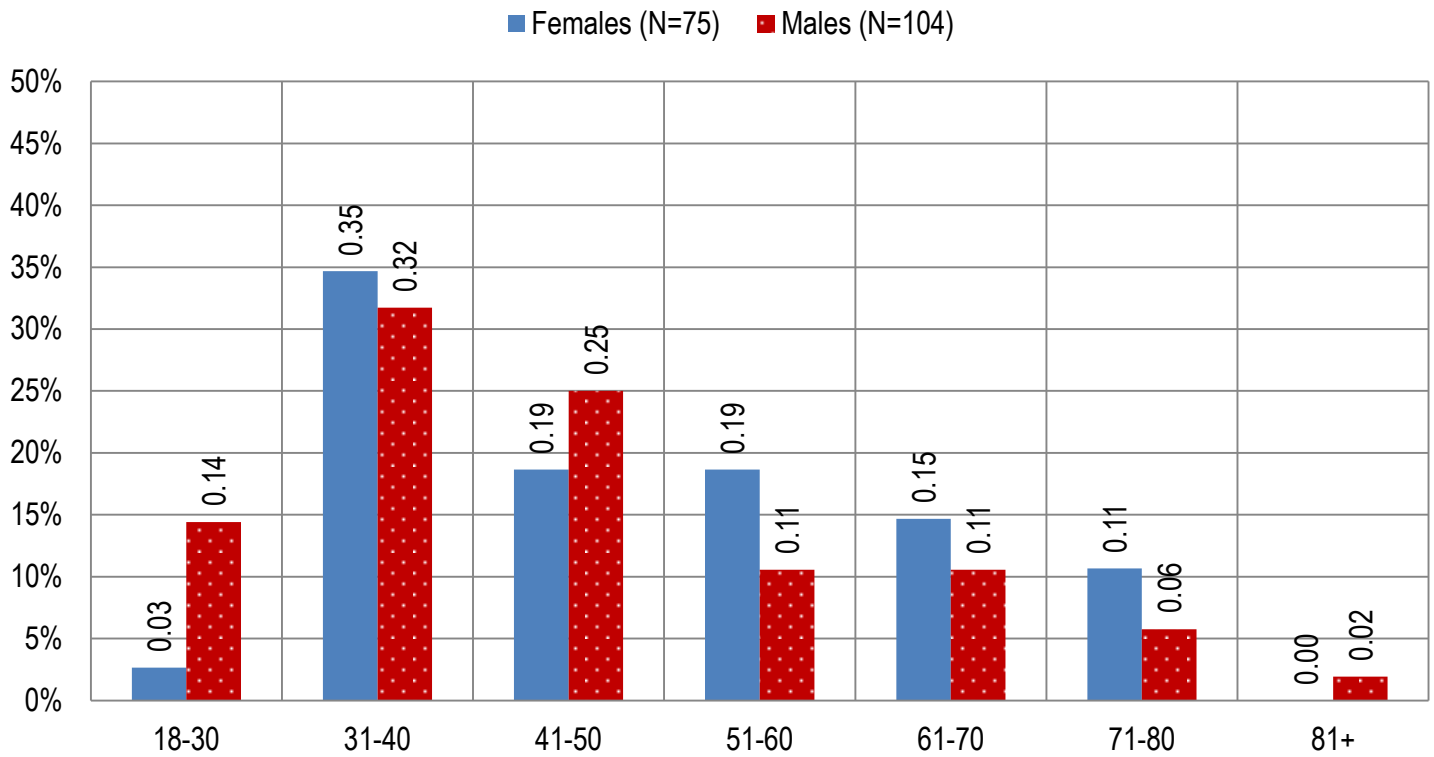


Figure 2b. Arizona Medical Marijuana Licensed Caregivers Characteristics by Gender and Age

(N = 147)

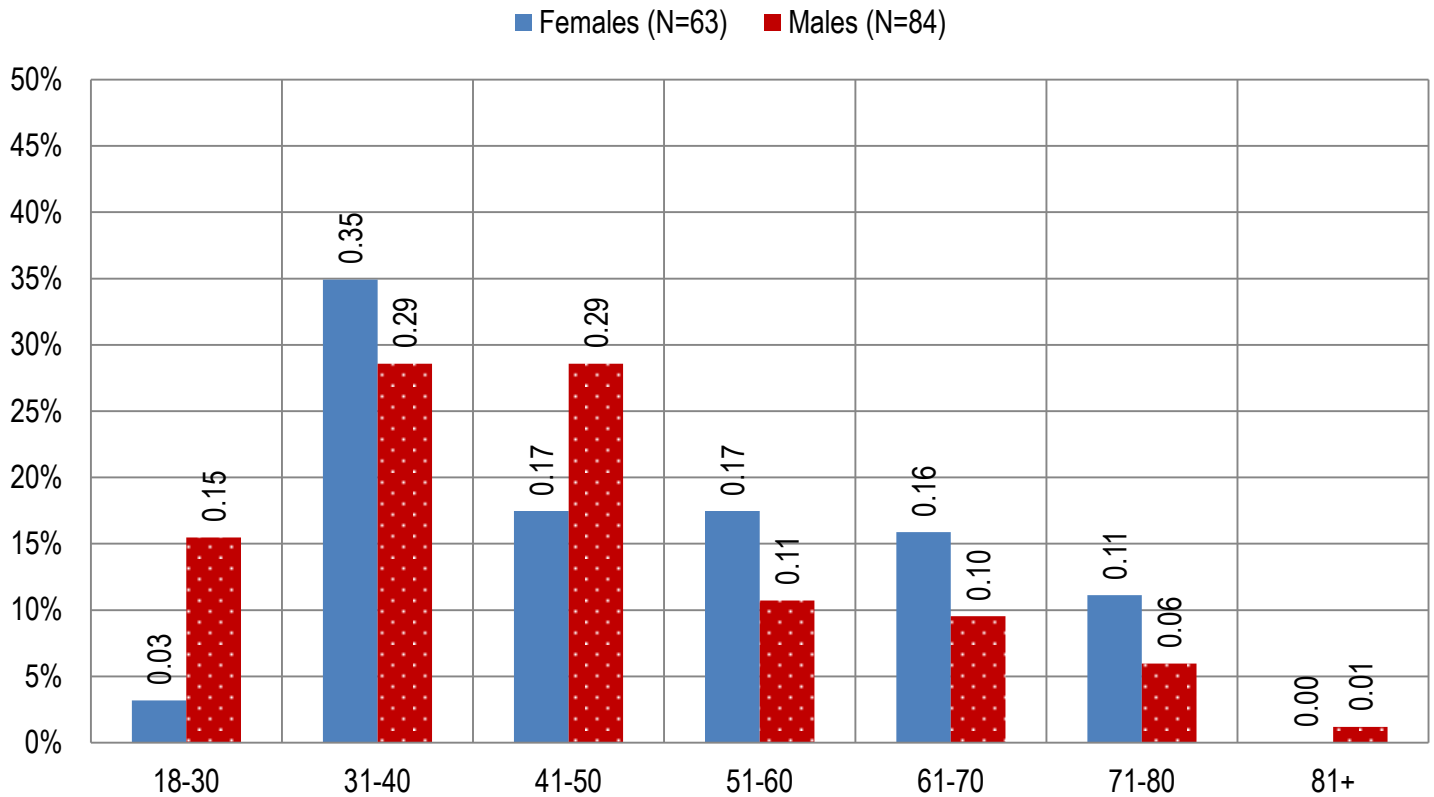


Table 4a. Arizona Medical Marijuana Applications Received- Patient Medical Conditions Profile

Patient medical condition profile of Applications Received [¶]	Totals	Percent Total
Alzheimer's	12	0.03%
Cachexia	17	0.04%
Cancer	602	1.45%
Chronic Pain	37,741	90.71%
Crohn's Disease	103	0.25%
Glaucoma	185	0.44%
Hepatitis C	113	0.27%
HIV/AIDS	131	0.31%
Muscle Spasms	130	0.31%
Nausea	137	0.33%
Post-Traumatic Stress Disorder (PTSD)	496	1.19%
Sclerosis	7	0.02%
Seizures	189	0.45%
Two Or More Conditions	1,741	4.18%
TOTAL	41,604	100.00%

[¶]Unique debilitating conditions

Table 4b. Arizona Medical Marijuana Licensed Qualifying Patients Medical Conditions Profile

Patient medical condition profile of Applications Approved [¶]	Totals	Percent Total
Alzheimer's	12	0.03%
Cachexia	17	0.04%
Cancer	580	1.45%
Chronic Pain	36,306	90.75%
Crohn's Disease	101	0.25%
Glaucoma	180	0.45%
Hepatitis C	109	0.27%
HIV/AIDS	128	0.32%
Muscle Spasms	123	0.31%
Nausea	135	0.34%
Post-Traumatic Stress Disorder (PTSD)	469	1.17%
Sclerosis	7	0.02%
Seizures	179	0.45%
Two Or More Conditions	1,659	4.15%
TOTAL	40,005	100.00%

[¶]Unique debilitating conditions

Table 5a. Arizona Medical Marijuana Applications Received for Applicants Seeking Authorization to Cultivate

Applications Received for cardholders with cultivation status	Totals	Percent total
Qualifying patients (n = 41,604)	402	0.97%

Table 5b. Arizona Medical Marijuana Licensed Qualifying Patients and Designated Caregivers Authorized for Cultivation

Approved cardholders cultivation status	Totals	Percent total
Qualifying patients (n =40,005)	402	1.00%

Table 7a. Type and Amount of Transactions at Medical Marijuana Dispensaries in 2020 to Date

Type of Transaction [†]	Ounces (oz.)	Pounds
Marijuana	436,670.50	27,291.91
Marijuana Edible	14,359.72	897.48
Marijuana Other	31,989.30	1,999.33
Total Marijuana Sold	483,019.52	30,188.72

[†] Amounts have been rounded and may not added to exact totals

Figure 5. Transactions and Amount of Marijuana Sold in 2020 by Month

