

Arizona Medical Marijuana Program April 2020 Monthly Report

In December 2010, Arizona voters passed the Arizona Medical Marijuana Act (AMMA), A.R.S. §36-2801 *et seq.* The AMMA went into effect on April 14, 2011, making Arizona the fourteenth state to adopt a medical marijuana law. The AMMA designates the Arizona Department of Health Services (ADHS) as the licensing and issuing authority for the Arizona Medical Marijuana Program.

The AMMA monthly report highlights the most current program statistics. This includes data on active medical marijuana cardholders as well as transaction data from the sale of medical marijuana at non-profit medical marijuana dispensaries. Tables 1 through 6 and Figures 1 through 3 reflect data that are point-in-time. Table 7 and Figure 4 are data from the month of April, 2020. The Year-To-Date section which follows shows cumulative applications and approvals for 2020. For further information and statistics, please reference the Arizona Medical Marijuana Annual Report.

Table 1. Arizona Medical Marijuana Active Qualifying Patients, Designated Caregivers and Dispensary Agents Profile

Active Cardholder's Profile	Totals	Percent Total
1. Qualifying patients (QPs)	235,999	96.73%
2. Caregivers (CGs)	693	0.28%
3. Dispensary Agents (DA)	7,289	2.99%
Total	243,981	100.00%

*Note: For caregivers and dispensary agents, these data reflect unique individuals, not the number of cards.

Table 2. Arizona Medical Marijuana Active Qualifying Patients Profile

Application profile of qualifying patients	Totals	Percent Total
1. New applications	140,766	59.65%
2. Renewal applications	89,572	37.95%
3. Changed demographics	2,821	1.20%
4. Added Caregivers	183	0.08%
5. Change Dup	2,653	1.12%
6. Replaced Caregivers	4	0.00%
7. Removed Caregivers	0	0.00%
Total	235,999	100.00

Approximately 11 percent (n = 28,065) of the active cardholders were determined to be SNAP eligible. Of the 28,065 that were determined to be eligible, 14,908 (~53%) were females and 13,157 (~47%) were males.

Table 3. Arizona Medical Marijuana Active Qualifying Patients Characteristics

Characteristics of Active Cardholders who are Qualified Patients	Totals (N =235,999)	Percent Total
Patient Age-groups		
Less than 18 years	162	0.07%
18 to 30 years	60,287	25.55%
31 to 40 years	51,501	21.82%
41 to 50 years	38,118	16.15%
51 to 60 years	35,299	14.96%
61 to 70 years	35,852	15.19%
71 to 80 years	12,814	5.43%
81 and older	1,966	0.83%
Patient Gender		
Male	139,244	59.00%
Female	96,755	41.00%

Figure 1. Arizona Medical Marijuana Active Qualifying Patients Characteristics by Gender and Age (N = 235,999)

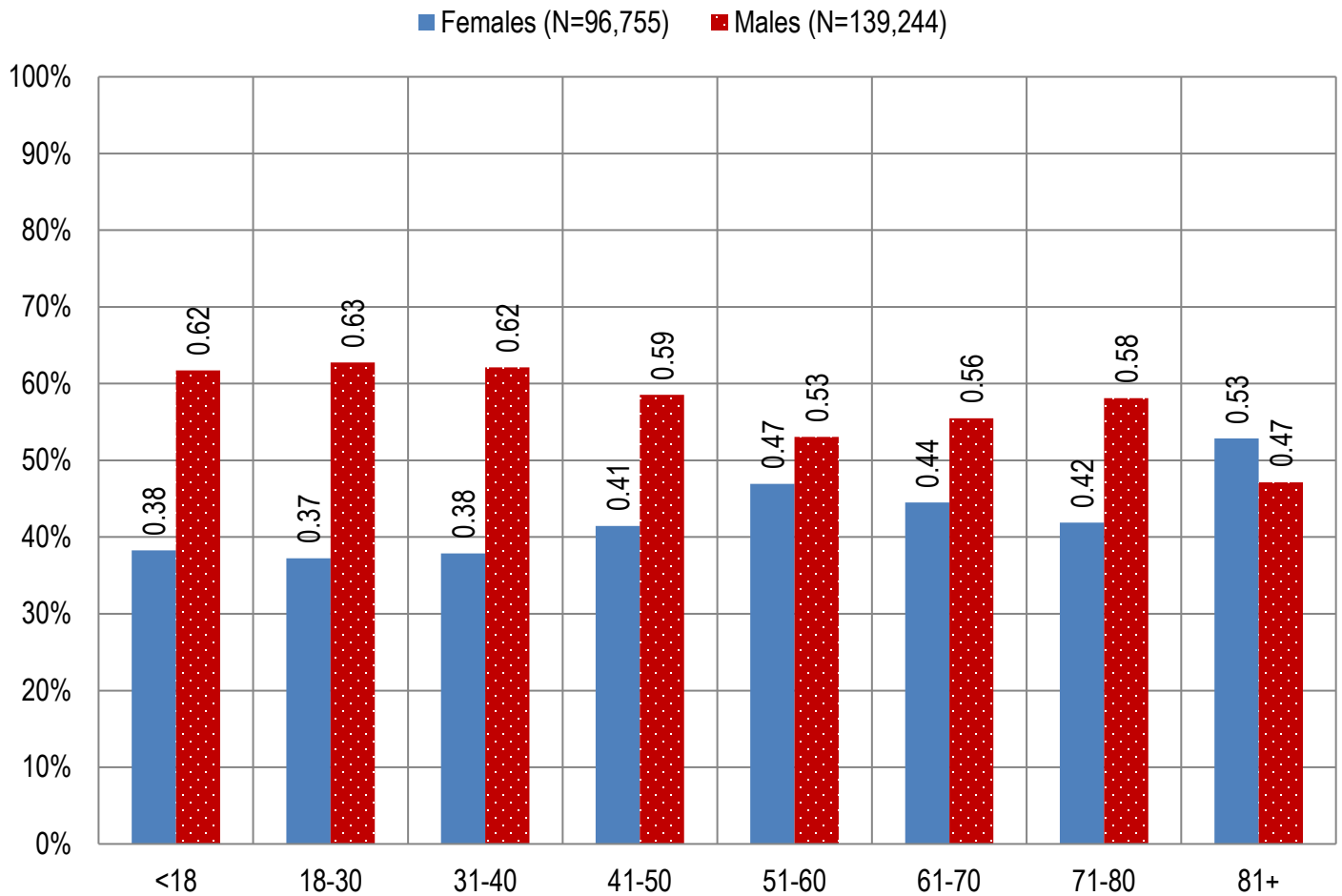


Table 4. Arizona Medical Marijuana Active Qualifying Patients Medical Condition Profile

Patient medical condition profile of Active Cardholders [¶]	Totals	Percent Total
Alzheimer's	74	0.03%
Cachexia	125	0.05%
Cancer	3,822	1.62%
Chronic Pain	213,173	90.33%
Crohn's Disease	609	0.26%
Glaucoma	1,066	0.45%
Hepatitis C	597	0.25%
HIV/AIDS	762	0.32%
Muscle Spasms	812	0.34%
Nausea	854	0.36%
Post-Traumatic Stress Disorder (PTSD)	2,642	1.12%
Sclerosis	39	0.02%
Seizures	1,192	0.51%
Two Or More Conditions	10,232	4.34%
TOTAL	235,999	100.00%

[¶]Unique debilitating conditions

Figure 2. Arizona Medical Marijuana Active Designated Caregiver Characteristics by Gender and Age (N = 693)

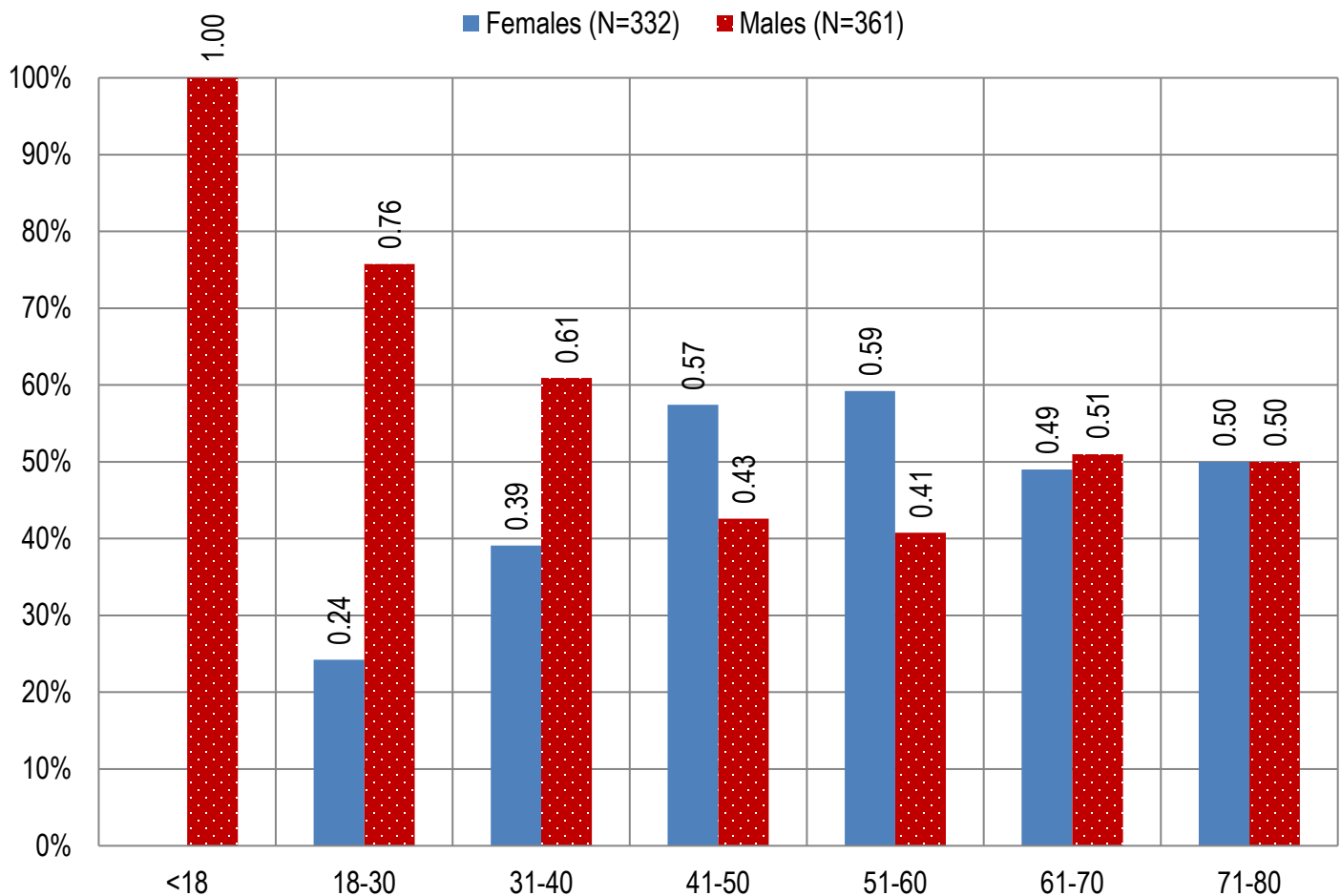


Table 5. Arizona Medical Marijuana Active Qualifying Patients and Designated Caregivers Authorized for Cultivation

Active cardholders cultivation status	Totals	Percent Total
Qualifying patients (n =235,999)	2,654	1.12%
Caregivers (n =693)	259	37.37%

Table 6. Frequency of Qualifying Patients, Caregivers, and Dispensary Agents by County of Residence

County	Qualifying Patients	Caregivers	Dispensary Agents*
Apache County	918	Count under 20	29
Cochise County	3,307	Count under 20	231
Coconino County	4,511	21	148
Gila County	2,100	Count under 20	40
Graham County	986	Count under 20	Count under 20
Greenlee County	254	Count under 20	Count under 20
La Paz County	337	Count under 20	Count under 20
Maricopa County	155,013	373	4,450
Mohave County	5,332	Count under 20	204
Navajo County	2,873	Count under 20	421
Pima County	31,739	123	756
Pinal County	14,506	34	269
Santa Cruz County	693	Count under 20	207
Yavapai County	11,363	55	416
Yuma County	2,067	Count under 20	Count under 20
TOTAL	235,999	693	7,289

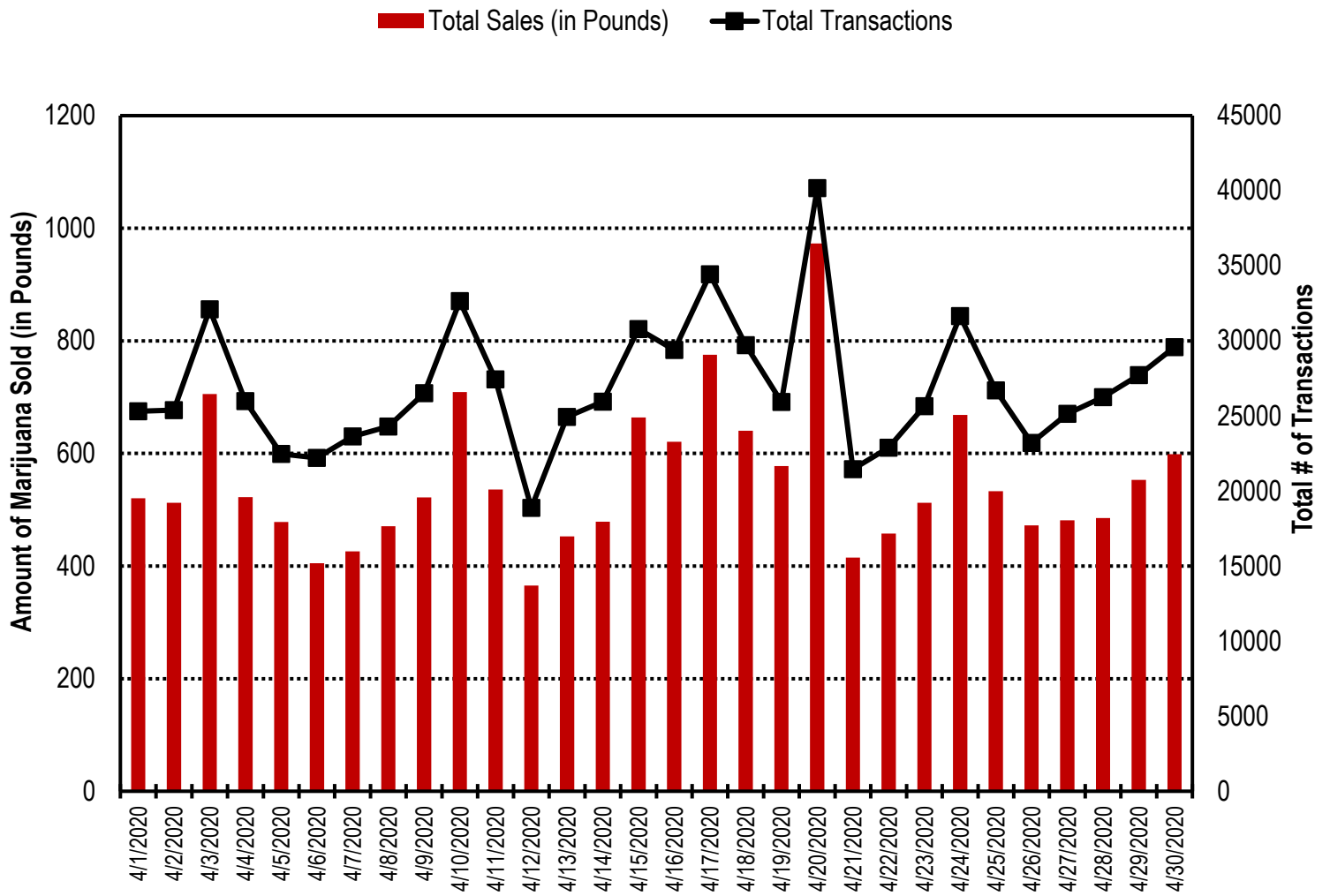
* 70 Dispensary Agents are located outside of Arizona.

Table 7. Type and Amount of Transactions at Medical Marijuana Dispensaries in April 2020

Type of Transaction [†]	Ounces (oz.)	Pounds
Marijuana	237,256.02	14,828.50
Marijuana Edible	7,344.46	459.03
Marijuana Other	19,897.47	1,243.59
Total Marijuana Sold	264,497.95	16,531.12

[†]Amounts have been rounded and may not added to exact totals

Figure 4. Daily Transactions and Amount of Marijuana Sold in April, 2020



YEAR TO DATE

Table 1a. Arizona Medical Marijuana Applications Received- Application Profile

Applications Received Cardholder Profile	Totals	Percent Total
Qualifying patients (QPs)	94,753	95.00%
Caregivers (CGs)	434	0.44%
Dispensary Agents (DA)	4,553	4.56%
Total	99,740	100.00%

*Note: For caregivers and dispensary agents, these data reflect unique individuals, not the number of cards.

Table 1b. Arizona Medical Marijuana Licensed Qualifying Patients, Designated Caregivers and Dispensary Agents Profile

Applications Approved Cardholder Profile	Totals	Percent Total
Qualifying patients (QPs)	93,508	95.20%
Caregivers (CGs)	375	0.38%
Dispensary Agents (DA)	4,343	4.42%
Total	98,226	100.00%

*Note: For caregivers and dispensary agents, these data reflect unique individuals, not the number of cards.

Table 2. Arizona Medical Marijuana Licensed Qualifying Patient Profile

Applications Approved for Qualifying Patients	Totals	Percent Total
New applications	55,745	59.62%
Renewal applications	36,587	39.13%
Changed demographics	556	0.59%
Added Caregivers	89	0.10%
Change Dup	528	0.56%
Replaced Caregivers	3	0.00%
Removed Caregivers	0	0.00%
Total	93,508	100.00%

Table 3a. Arizona Medical Marijuana Applications Received- Patient Characteristics

Characteristics of Applications Received who are Qualified Patients	Totals (N = 94,753)	Percent Total
Patient Age-groups		
Less than 18 years	55	0.06%
18 to 30 years	27,521	29.04%
31 to 40 years	22,271	23.50%
41 to 50 years	14,982	15.81%
51 to 60 years	13,096	13.82%
61 to 70 years	12,352	13.04%
71 to 80 years	3,972	4.19%
81 and older	504	0.53%
Patient Gender		
Male	55,119	58.17%
Female	39,634	41.83%

Table 3b. Arizona Medical Marijuana Licensed Qualifying Patient Characteristics

Characteristics of Approved Applications who are Qualified Patients	Totals (N = 93,508)	Percent Total
Patient Age-groups		
Less than 18 years	39	0.04%
18 to 30 years	27,158	29.04%
31 to 40 years	21,956	23.48%
41 to 50 years	14,781	15.81%
51 to 60 years	12,946	13.84%
61 to 70 years	12,204	13.05%
71 to 80 years	3,925	4.20%
81 and older	499	0.53%
Patient Gender		
Male	54,405	58.18%
Female	39,103	41.82%

Figure 1a. Arizona Medical Marijuana Applications Received- Patient Characteristics by Gender and Age

(N =94,753)

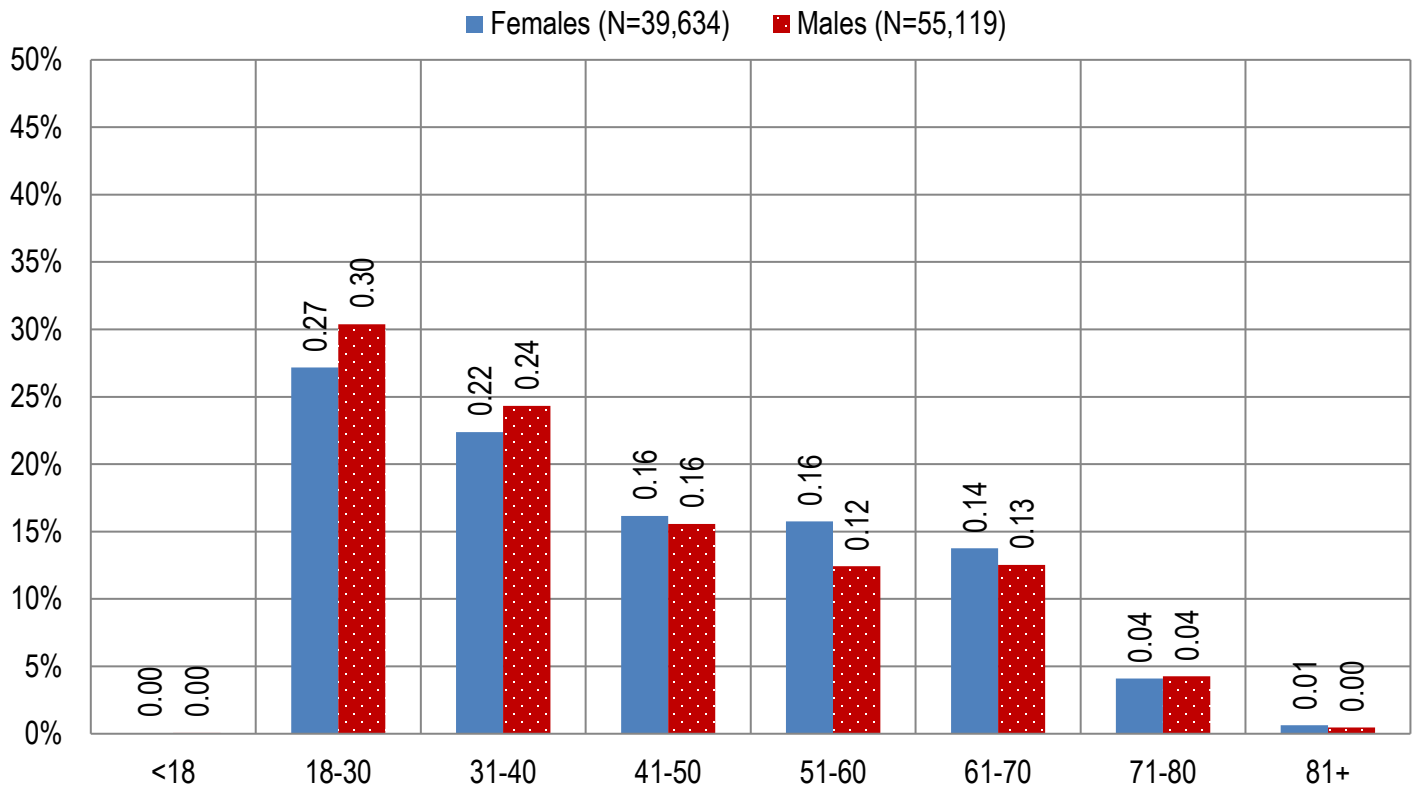


Figure 1b. Arizona Medical Marijuana Licensed Qualifying Patient Characteristics by Gender and Age

(N =93,508)

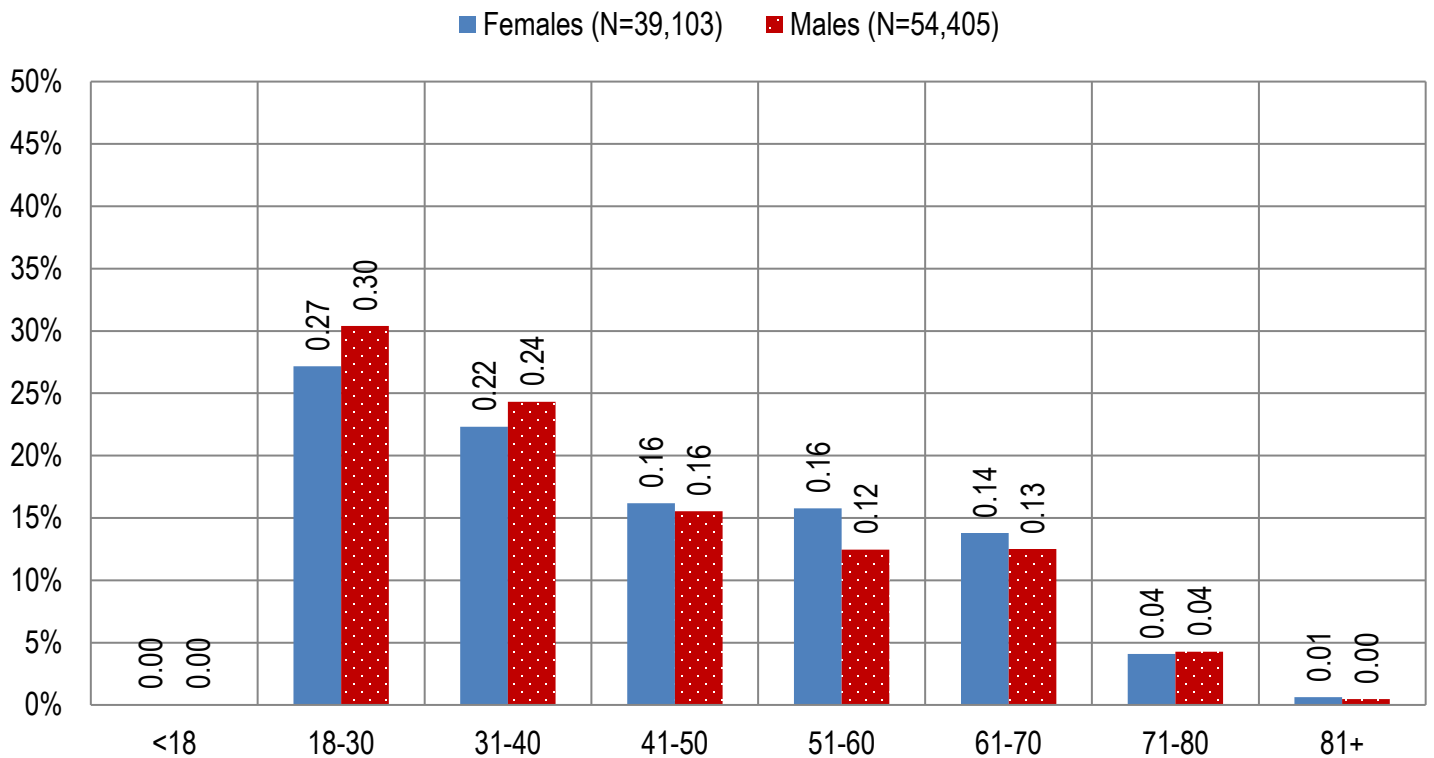


Figure 2a. Arizona Medical Marijuana Applications Received- Caregivers Characteristics by Gender and Age

(N = 434)

■ Females (N=168) ■ Males (N=266)

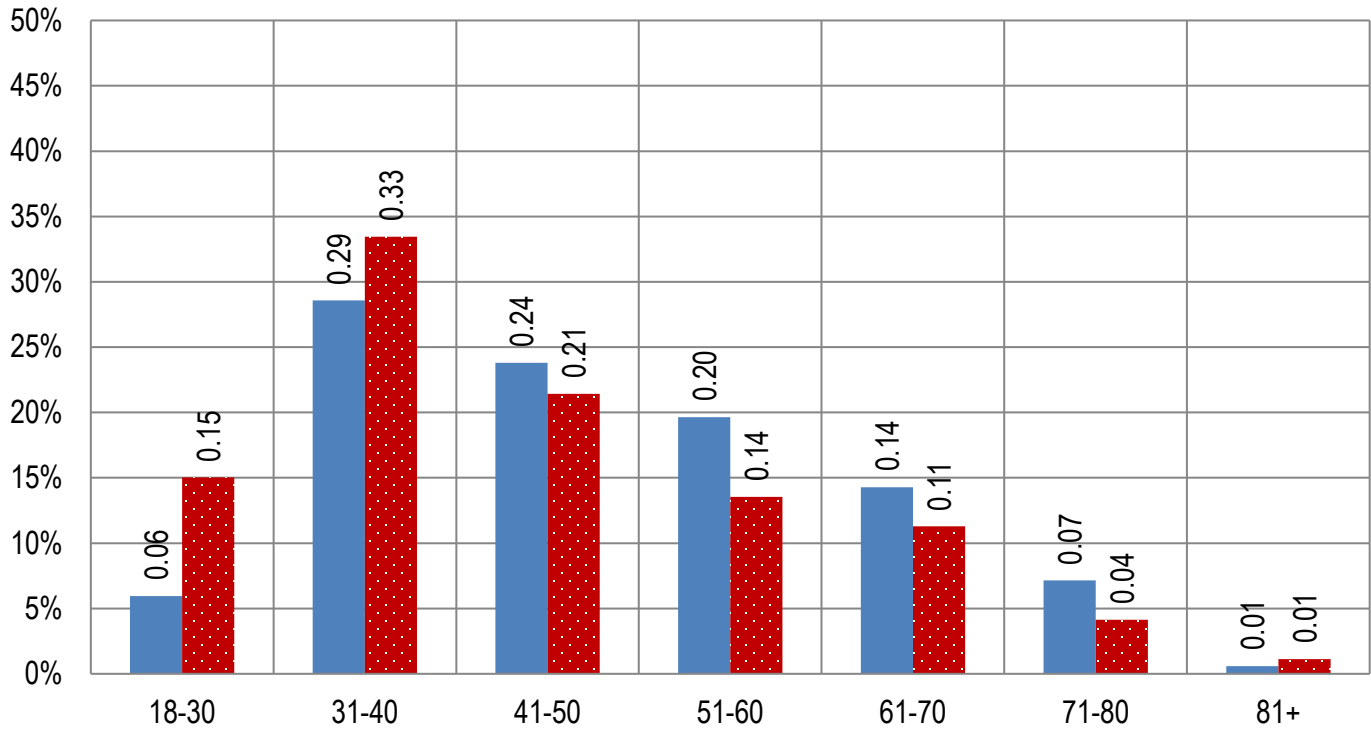


Figure 2b. Arizona Medical Marijuana Licensed Caregivers Characteristics by Gender and Age

(N = 375)

■ Females (N=141) ■ Males (N=234)

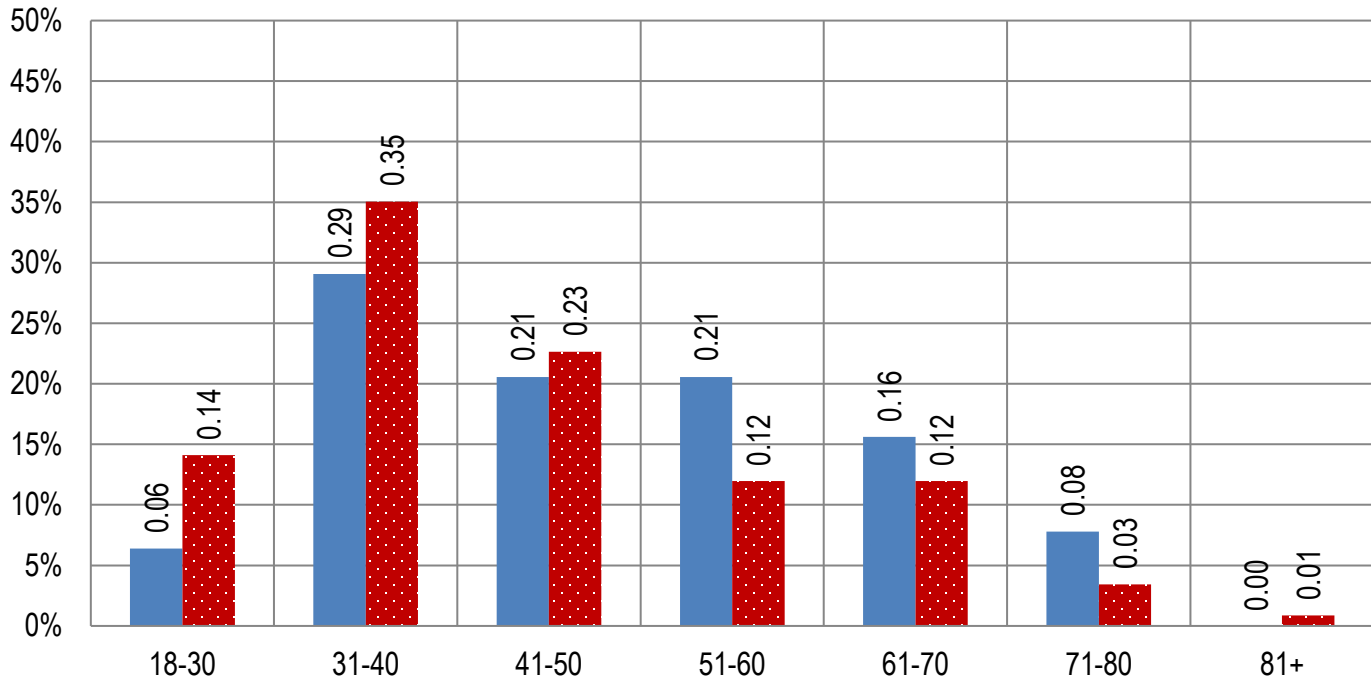


Table 4a. Arizona Medical Marijuana Applications Received- Patient Medical Conditions Profile

Patient medical condition profile of Applications Received [¶]	Totals	Percent Total
Alzheimer's	26	0.03%
Cachexia	43	0.05%
Cancer	1,217	1.28%
Chronic Pain	86,718	91.52%
Crohn's Disease	217	0.23%
Glaucoma	352	0.37%
Hepatitis C	236	0.25%
HIV/AIDS	291	0.31%
Muscle Spasms	267	0.28%
Nausea	295	0.31%
Post-Traumatic Stress Disorder (PTSD)	1,028	1.08%
Sclerosis	18	0.02%
Seizures	429	0.45%
Two Or More Conditions	3,616	3.82%
TOTAL	94,753	100.00%

[¶]Unique debilitating conditions

Table 4b. Arizona Medical Marijuana Licensed Qualifying Patients Medical Conditions Profile

Patient medical condition profile of Applications Approved [¶]	Totals	Percent Total
Alzheimer's	26	0.03%
Cachexia	42	0.04%
Cancer	1,200	1.28%
Chronic Pain	85,608	91.55%
Crohn's Disease	214	0.23%
Glaucoma	350	0.37%
Hepatitis C	234	0.25%
HIV/AIDS	286	0.31%
Muscle Spasms	261	0.28%
Nausea	289	0.31%
Post-Traumatic Stress Disorder (PTSD)	1,011	1.08%
Sclerosis	17	0.02%
Seizures	421	0.45%
Two Or More Conditions	3,549	3.80%
TOTAL	93,508	100.00%

[¶]Unique debilitating conditions

Table 5a. Arizona Medical Marijuana Applications Received for Applicants Seeking Authorization to Cultivate

Applications Received for cardholders with cultivation status	Totals	Percent total
Qualifying patients (n = 94,743)	1055	1.11%

Table 5b. Arizona Medical Marijuana Licensed Qualifying Patients and Designated Caregivers Authorized for Cultivation

Approved cardholders cultivation status	Totals	Percent total
Qualifying patients (n =93,508)	1055	1.13%

Table 7a. Type and Amount of Transactions at Medical Marijuana Dispensaries in 2020 to Date

Type of Transaction [†]	Ounces (oz.)	Pounds
Marijuana	920,452.76	57,528.30
Marijuana Edible	29,894.60	1,868.41
Marijuana Other	70,687.86	4,417.99
Total Marijuana Sold	1,021,035.21	63,814.70

[†]Amounts have been rounded and may not added to exact totals

Figure 5. Transactions and Amount of Marijuana Sold in 2020 by Month

