

Arizona Medical Marijuana Program November 2019 Monthly Report

In December 2010, Arizona voters passed the Arizona Medical Marijuana Act (AMMA), A.R.S. §36-2801 *et seq.* The AMMA went into effect on April 14, 2011, making Arizona the fourteenth state to adopt a medical marijuana law. The AMMA designates the Arizona Department of Health Services (ADHS) as the licensing and issuing authority for the Arizona Medical Marijuana Program.

The AMMA monthly report highlights the most current program statistics. This includes data on active medical marijuana cardholders as well as transaction data from the sale of medical marijuana at non-profit medical marijuana dispensaries. Tables 1 through 6 and Figures 1 through 3 reflect data that are point-in-time. Table 7 and Figure 4 are data from the month of November, 2019. The Year-To-Date section which follows shows cumulative applications and approvals for 2019. For further information and statistics, please reference the Arizona Medical Marijuana Annual Report.

Table 1. Arizona Medical Marijuana Active Qualifying Patients, Designated Caregivers and Dispensary Agents Profile

Active Cardholder's Profile	Totals	Percent Total
1. Qualifying patients (QPs)	218,198	96.64%
2. Caregivers (CGs)	739	0.33%
3. Dispensary Agents (DA)	6,842	3.03%
Total	225,779	100.00%

*Note: For caregivers and dispensary agents, these data reflect unique individuals, not the number of cards.

Table 2. Arizona Medical Marijuana Active Qualifying Patients Profile

Application profile of qualifying patients	Totals	Percent Total
1. New applications	126,085	57.78%
2. Renewal applications	82,921	38.00%
3. Changed demographics	3,908	1.79%
4. Added Caregivers	170	0.08%
5. Change Dup	5,097	2.34%
6. Replaced Caregivers	15	0.01%
7. Removed Caregivers	2	0.00%
Total	218,198	100.00%

Approximately 11 percent (n = 25,290) of the active cardholders were determined to be SNAP eligible. Of the 25,290 that were determined to be eligible, 13,048 (~52%) were females and 12,242 (~48%) were males.

Table 3. Arizona Medical Marijuana Active Qualifying Patients Characteristics

Characteristics of Active Cardholders who are Qualified Patients	Totals (N =218,198)	Percent Total
Patient Age-groups		
Less than 18 years	182	0.08%
18 to 30 years	53,447	24.49%
31 to 40 years	46,466	21.30%
41 to 50 years	35,163	16.12%
51 to 60 years	33,912	15.54%
61 to 70 years	34,695	15.90%
71 to 80 years	12,269	5.62%
81 and older	2,064	0.95%
Patient Gender		
Male	129,519	59.36%
Female	88,679	40.64%

**Figure 1. Arizona Medical Marijuana Active Qualifying Patients Characteristics by Gender and Age
(N = 218,198)**

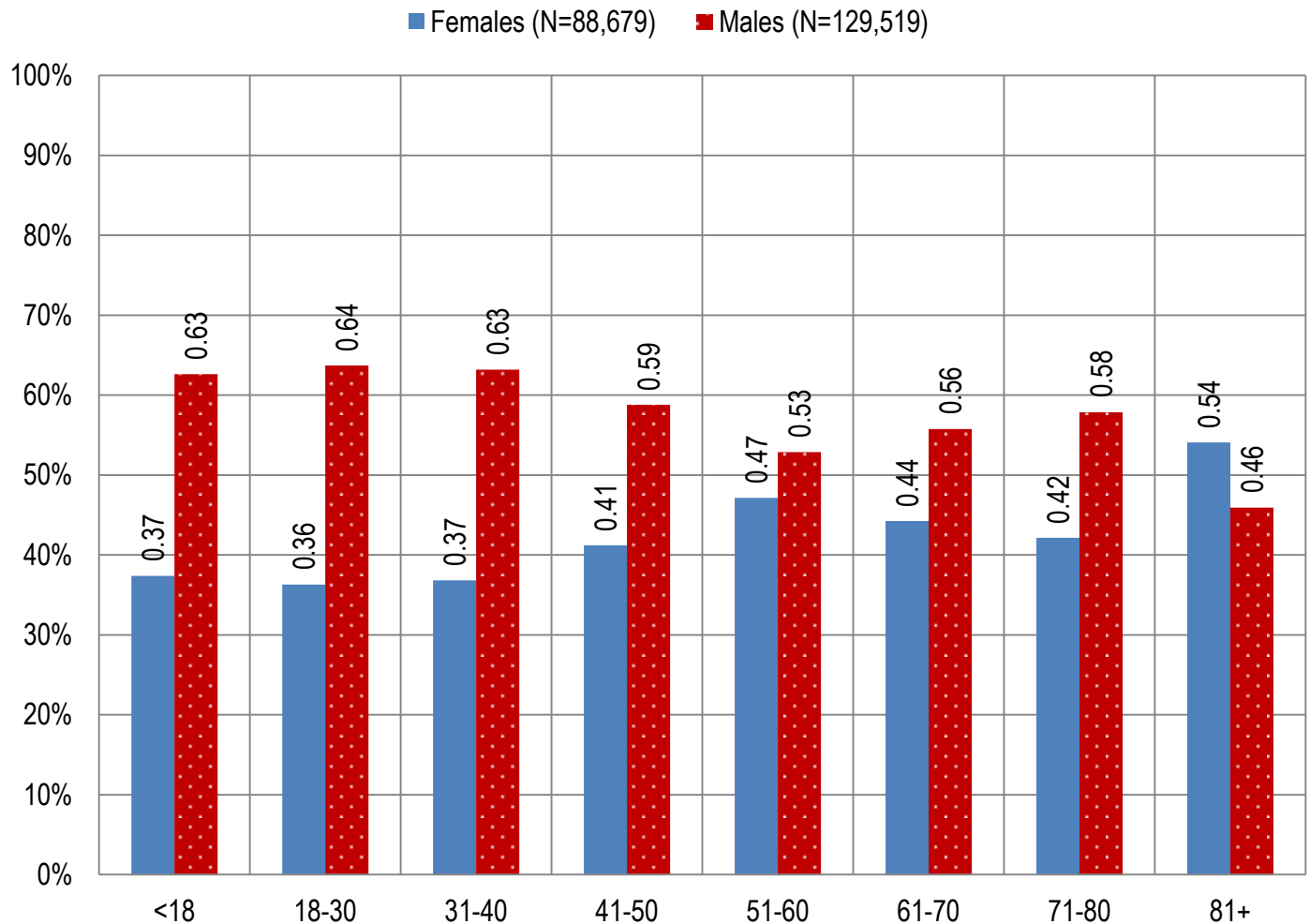


Table 4. Arizona Medical Marijuana Active Qualifying Patients Medical Condition Profile

Patient medical condition profile of Active Cardholders [¶]	Totals	Percent Total
Alzheimer's	91	0.04%
Cachexia	127	0.06%
Cancer	4,041	1.85%
Chronic Pain	195,041	89.39%
Crohn's Disease	638	0.29%
Glaucoma	1,096	0.50%
Hepatitis C	676	0.31%
HIV/AIDS	751	0.34%
Muscle Spasms	899	0.41%
Nausea	850	0.39%
Post-Traumatic Stress Disorder (PTSD)	2,517	1.15%
Sclerosis	30	0.01%
Seizures	1,208	0.55%
Two Or More Conditions	10,233	4.69%
TOTAL	218,198	100.00%

[¶]Unique debilitating conditions

**Figure 2. Arizona Medical Marijuana Active Designated Caregiver Characteristics by Gender and Age
(N = 739)**

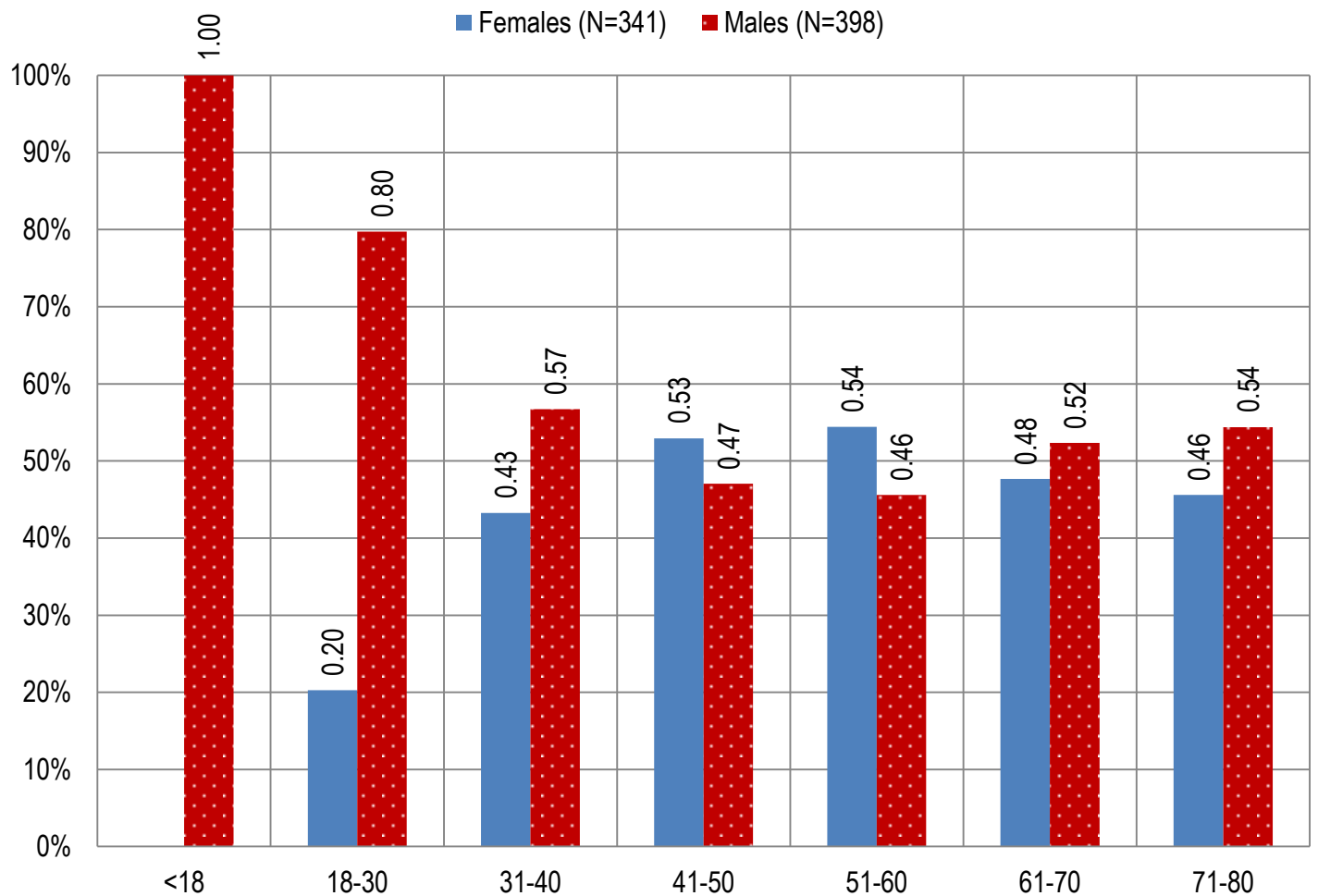


Table 5. Arizona Medical Marijuana Active Qualifying Patients and Designated Caregivers Authorized for Cultivation

Active cardholders cultivation status	Totals	Percent Total
Qualifying patients (n =218,198)	2,409	1.10%
Caregivers (n =739)	279	37.75%

Table 6. Frequency of Qualifying Patients, Caregivers, and Dispensary Agents by County of Residence

County	Qualifying Patients	Caregivers	Dispensary Agents*
Apache County	877	Count under 20	29
Cochise County	3,172	Count under 20	225
Coconino County	4,350	24	140
Gila County	1,952	Count under 20	39
Graham County	894	Count under 20	Count under 20
Greenlee County	232	Count under 20	Count under 20
La Paz County	336	Count under 20	Count under 20
Maricopa County	142,202	407	4,135
Mohave County	5,068	Count under 20	222
Navajo County	2,611	Count under 20	377
Pima County	29,765	133	666
Pinal County	13,332	33	266
Santa Cruz County	671	Count under 20	193
Yavapai County	10,897	51	419
Yuma County	1,839	Count under 20	Count under 20
TOTAL	218,198	739	6,842

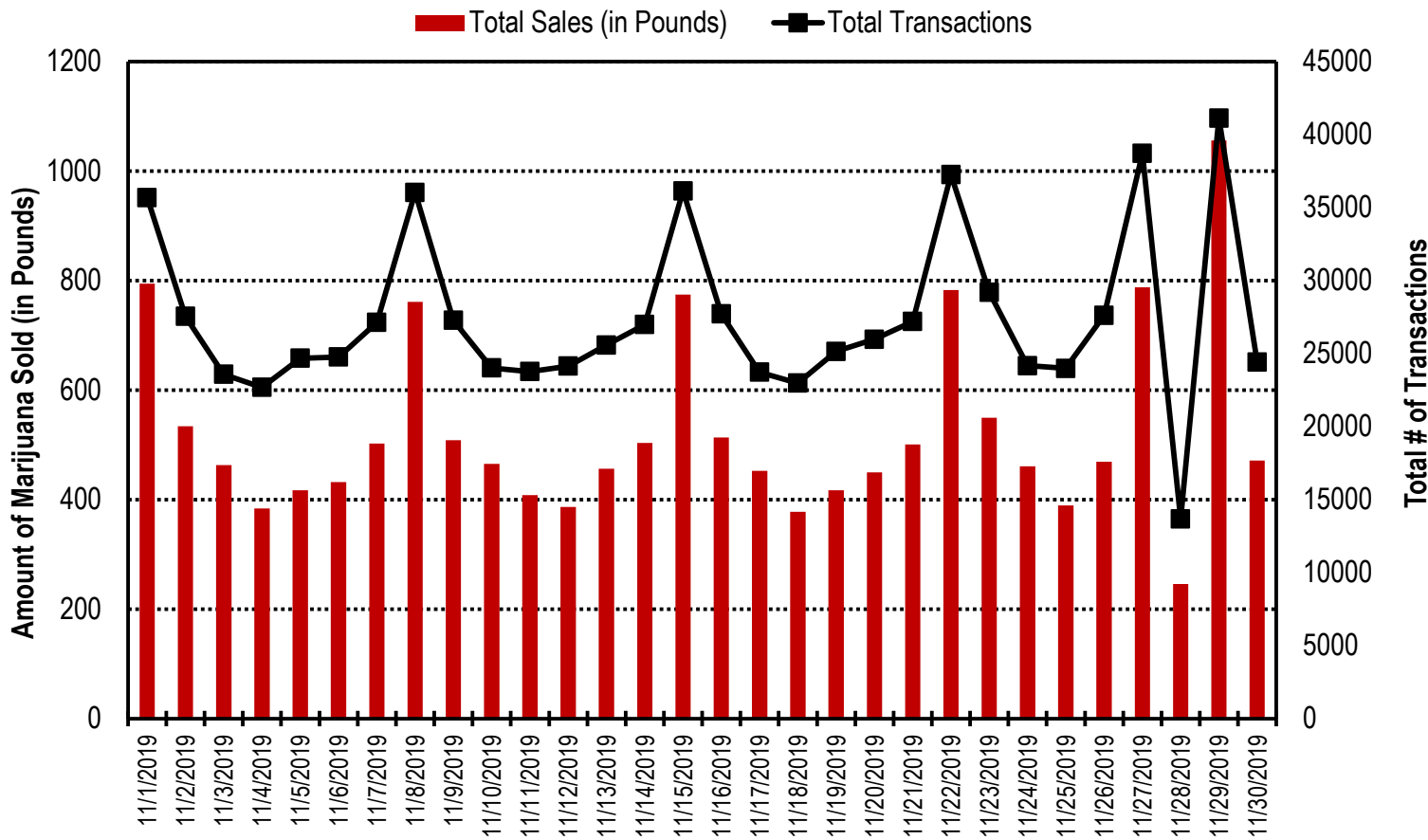
* 87 Dispensary Agents are located outside of Arizona.

Table 7. Type and Amount of Transactions at Medical Marijuana Dispensaries in November 2019

Type of Transaction [†]	Ounces (oz.)	Pounds
Marijuana	228,522.70	14,282.67
Marijuana Edible	8,055.62	503.48
Marijuana Other	14,850.13	928.13
Total Marijuana Sold	251,428.45	15,714.28

[†] Amounts have been rounded and may not added to exact totals

Figure 4. Daily Transactions and Amount of Marijuana Sold in November, 2019



YEAR TO DATE

Table 1a. Arizona Medical Marijuana Applications Received- Application Profile

Applications Received Cardholder Profile	Totals	Percent Total
Qualifying patients (QPs)	217,354	94.87%
Caregivers (CGs)	1,576	0.69%
Dispensary Agents (DA)	10,186	4.45%
Total	229,116	100.00%

*Note: For caregivers and dispensary agents, these data reflect unique individuals, not the number of cards.

Table 1b. Arizona Medical Marijuana Licensed Qualifying Patients, Designated Caregivers and Dispensary Agents Profile

Applications Approved Cardholder Profile	Totals	Percent Total
Qualifying patients (QPs)	216,652	95.01%
Caregivers (CGs)	1,479	0.65%
Dispensary Agents (DA)	99,00	4.34%
Total	228,031	100.00%

*Note: For caregivers and dispensary agents, these data reflect unique individuals, not the number of cards.

Table 2. Arizona Medical Marijuana Licensed Qualifying Patient Profile

Applications Approved for Qualifying Patients	Totals	Percent Total
New applications	122,556	56.57%
Renewal applications	81,461	37.60%
Changed demographics	4,907	2.26%
Added Caregivers	263	0.12%
Change Dup	7,428	3.43%
Replaced Caregivers	30	0.01%
Removed Caregivers	7	0.00%
Total	216,652	100.00%

Table 3a. Arizona Medical Marijuana Applications Received- Patient Characteristics

Characteristics of Applications Received who are Qualified Patients	Totals (N = 217,354)	Percent Total
Patient Age-groups		
Less than 18 years	207	0.10%
18 to 30 years	57,544	26.47%
31 to 40 years	46,132	21.22%
41 to 50 years	34,268	15.77%
51 to 60 years	33,403	15.37%
61 to 70 years	33,165	15.26%
71 to 80 years	10,822	4.98%
81 and older	1,813	0.83%
Patient Gender		
Male	129,588	59.62%
Female	87,766	40.38%

Table 3b. Arizona Medical Marijuana Licensed Qualifying Patient Characteristics

Characteristics of Approved Applications who are Qualified Patients	Totals (N = 216,652)	Percent Total
Patient Age-groups		
Less than 18 years	189	0.09%
18 to 30 years	57,355	26.47%
31 to 40 years	45,985	21.23%
41 to 50 years	34,161	15.77%
51 to 60 years	33,305	15.37%
61 to 70 years	33,076	15.27%
71 to 80 years	10,778	4.97%
81 and older	1,803	0.83%
Patient Gender		
Male	129,159	59.62%
Female	87,493	40.38%

Figure 1a. Arizona Medical Marijuana Applications Received- Patient Characteristics by Gender and Age

(N =217,354)

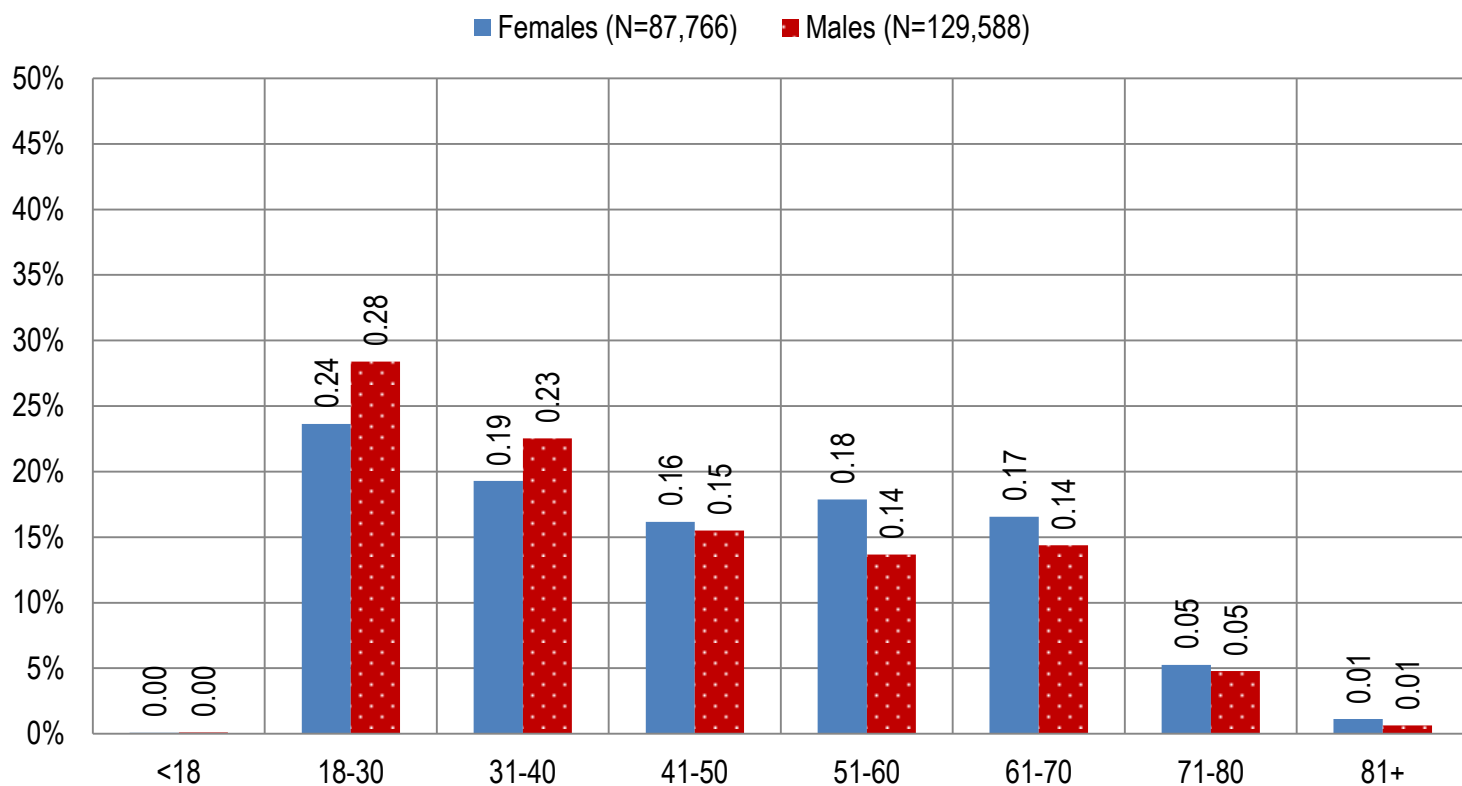


Figure 1b. Arizona Medical Marijuana Licensed Qualifying Patient Characteristics by Gender and Age

(N =216,652)

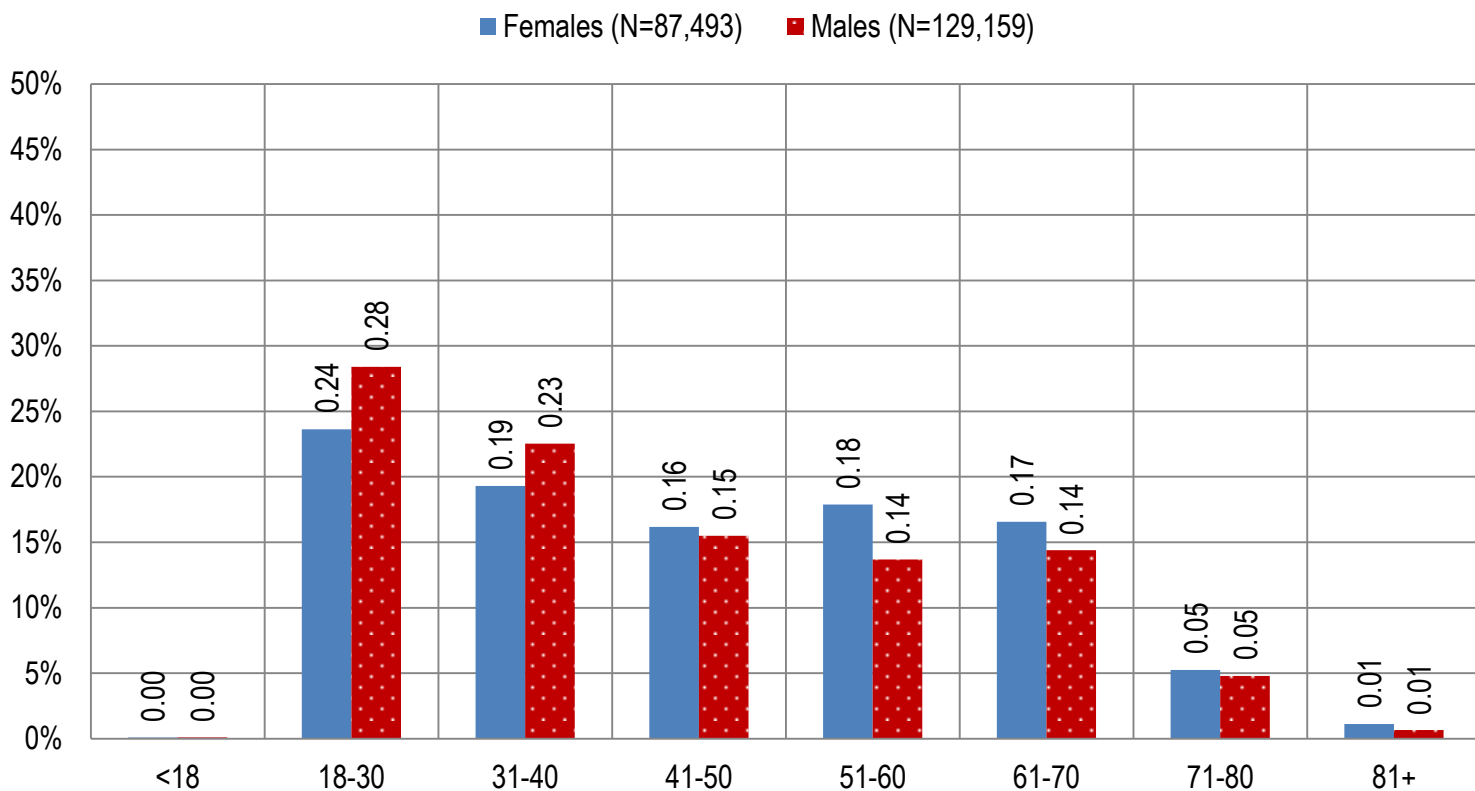


Figure 2a. Arizona Medical Marijuana Applications Received- Caregivers Characteristics by Gender and Age

(N = 1,576)

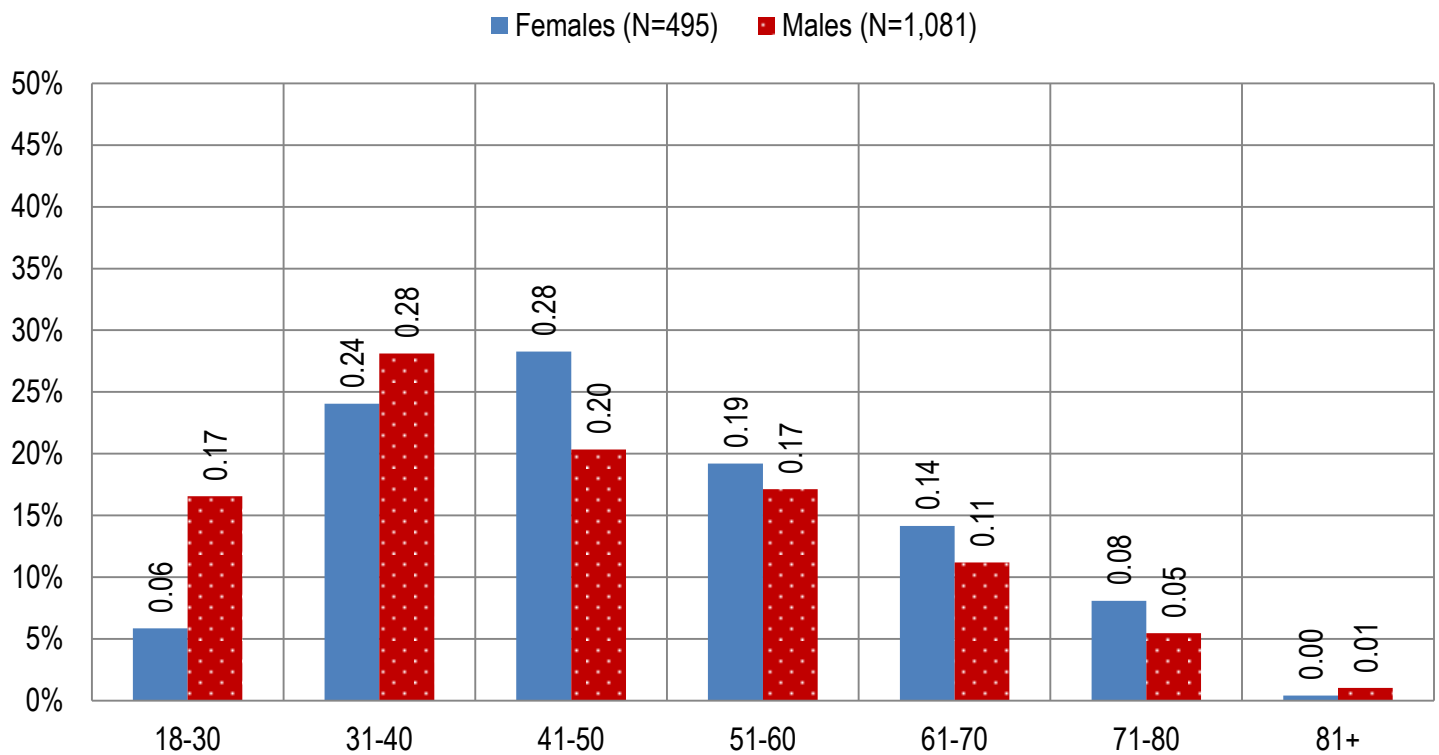


Figure 2b. Arizona Medical Marijuana Licensed Caregivers Characteristics by Gender and Age

(N = 1,479)

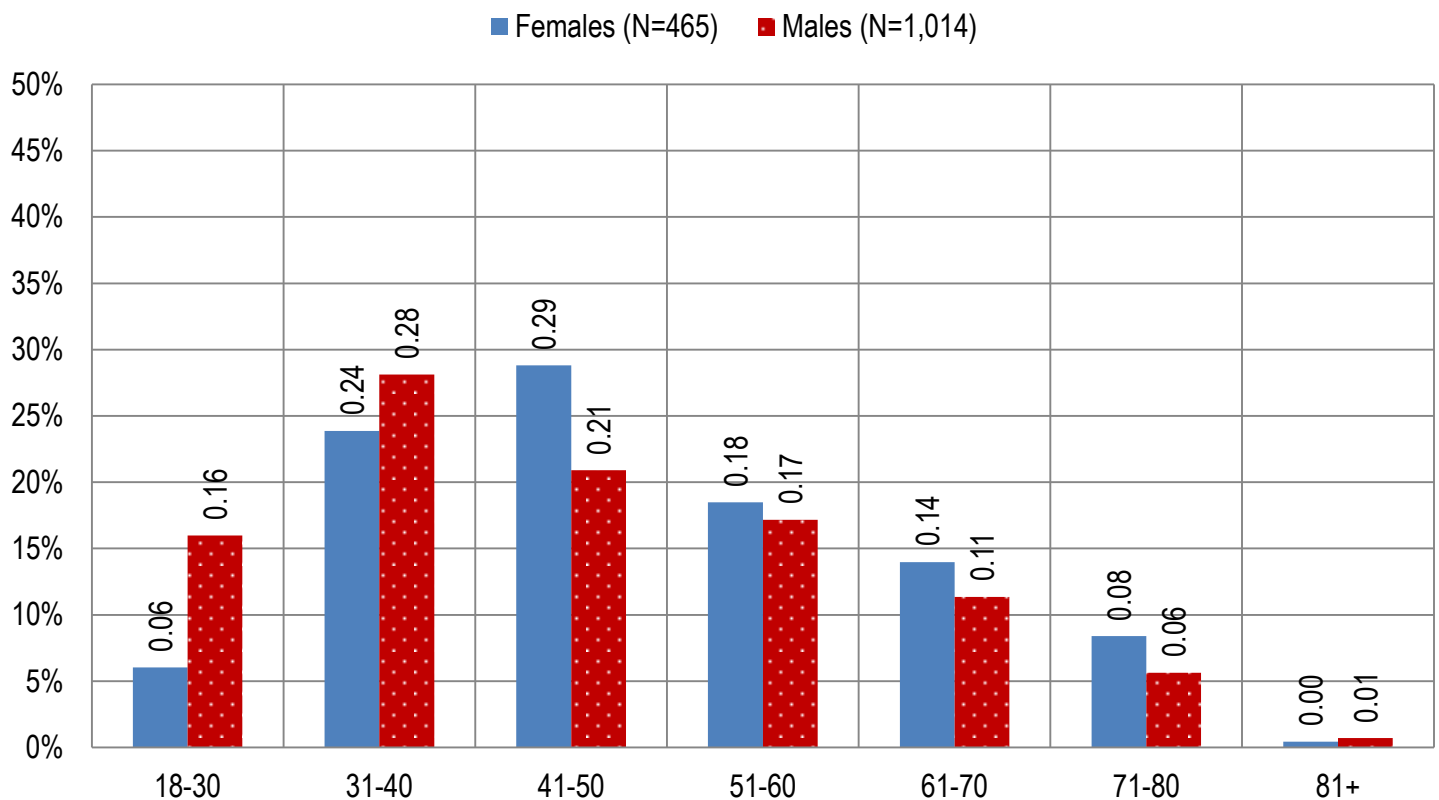


Table 4a. Arizona Medical Marijuana Applications Received- Patient Medical Conditions Profile

Patient medical condition profile of Applications Received [¶]	Totals	Percent Total
Alzheimer's	89	0.04%
Cachexia	120	0.06%
Cancer	3,863	1.78%
Chronic Pain	194,603	89.53%
Crohn's Disease	618	0.28%
Glaucoma	1,062	0.49%
Hepatitis C	672	0.31%
HIV/AIDS	737	0.34%
Muscle Spasms	871	0.40%
Nausea	843	0.39%
Post-Traumatic Stress Disorder (PTSD)	2,504	1.15%
Sclerosis	28	0.01%
Seizures	1,203	0.55%
Two Or More Conditions	10,141	4.67%
TOTAL	217,354	100.00%

[¶]Unique debilitating conditions

Table 4b. Arizona Medical Marijuana Licensed Qualifying Patients Medical Conditions Profile

Patient medical condition profile of Applications Approved[¶]	Totals	Percent Total
Alzheimer's	87	0.04%
Cachexia	118	0.05%
Cancer	3,837	1.77%
Chronic Pain	194,053	89.57%
Crohn's Disease	616	0.28%
Glaucoma	1,060	0.49%
Hepatitis C	670	0.31%
HIV/AIDS	731	0.34%
Muscle Spasms	862	0.40%
Nausea	839	0.39%
Post-Traumatic Stress Disorder (PTSD)	2,490	1.15%
Sclerosis	27	0.01%
Seizures	1,190	0.55%
Two Or More Conditions	10,072	4.65%
TOTAL	216,652	100.00%

[¶]Unique debilitating conditions

Table 5a. Arizona Medical Marijuana Applications Received for Applicants Seeking Authorization to Cultivate

Applications Received for cardholders with cultivation status	Totals	Percent total
Qualifying patients (n = 217,354)	2,465	1.13%

Table 5b. Arizona Medical Marijuana Licensed Qualifying Patients and Designated Caregivers Authorized for Cultivation

Approved cardholders cultivation status	Totals	Percent total
Qualifying patients (n = 216,652)	2,465	1.14%

Table 7a. Type and Amount of Transactions at Medical Marijuana Dispensaries in 2019 to Date

Type of Transaction [†]	Ounces (oz.)	Pounds
Marijuana	2,184,999.54	136,562.47
Marijuana Edible	87,541.41	5,471.34
Marijuana Other	132,582.08	8,286.38
Total Marijuana Sold	2,405,123.04	150,320.19

[†] Amounts have been rounded and may not added to exact totals

Figure 5. Transactions and Amount of Marijuana Sold in 2019 by Month

