

Arizona Medical Marijuana Program July 2018 Monthly Report

In December 2010, Arizona voters passed the Arizona Medical Marijuana Act (AMMA), A.R.S. §36-2801 *et seq.* The AMMA went into effect on April 14, 2011, making Arizona the fourteenth state to adopt a medical marijuana law. The AMMA designates the Arizona Department of Health Services (ADHS) as the licensing and issuing authority for the Arizona Medical Marijuana Program.

The AMMA monthly report highlights the most current program statistics. This includes data on active medical marijuana cardholders as well as transaction data from the sale of medical marijuana at non-profit medical marijuana dispensaries. Tables 1 through 6 and Figures 1 through 3 reflect data that are point in time. Table 7 and Figure 4 are data from the month of July, 2018. The Year-To-Date section which follows shows cumulative applications and approvals for 2018. For further information and statistics, please reference the Arizona Medical Marijuana Annual Report.

Table 1. Arizona Medical Marijuana Active Qualifying Patients, Designated Caregivers and Dispensary Agents Profile

Active Cardholder's Profile	Totals	Percent Total
1. Qualifying patients (QPs)	174,226	96.61%
2. Caregivers (CGs)	894	0.50%
3. Dispensary Agents (DA)	5,219	2.89%
Total	180,339	100.00%

*Note: For caregivers and dispensary agents, these data reflect unique individuals, not the number of cards.

Table 2. Arizona Medical Marijuana Active Qualifying Patients Profile

Application profile of qualifying patients	Totals	Percent Total
1. New applications	106,294	61.01%
2. Renewal applications	60,822	34.91%
3. Changed demographics	3,283	1.88%
4. Added Caregivers	183	0.11%
5. Change Dup	3,623	2.08%
6. Replaced Caregivers	18	0.01%
7. Removed Caregivers	3	0.00%
Total	174,226	100.00%

Approximately 11 percent (n = 19,406) of the active cardholders were determined to be SNAP eligible. Of the 19,406 that were determined to be eligible, 9,820 (~51%) were females and 9,586 (~49%) were males.

Table 3. Arizona Medical Marijuana Active Qualifying Patients Characteristics

Characteristics of Active Cardholders who are Qualified Patients	Totals (N =174,226)	Percent Total
Patient Age-groups		
Less than 18 years	200	0.11%
18 to 30 years	43,048	24.71%
31 to 40 years	36,105	20.72%
41 to 50 years	27,327	15.68%
51 to 60 years	28,390	16.29%
61 to 70 years	28,231	16.20%
71 to 80 years	9,079	5.21%
81 and older	1,846	1.06%
Patient Gender		
Male	104,572	60.02%
Female	69,654	39.98%

**Figure 1. Arizona Medical Marijuana Active Qualifying Patients Characteristics by Gender and Age
(N = 174,226)**

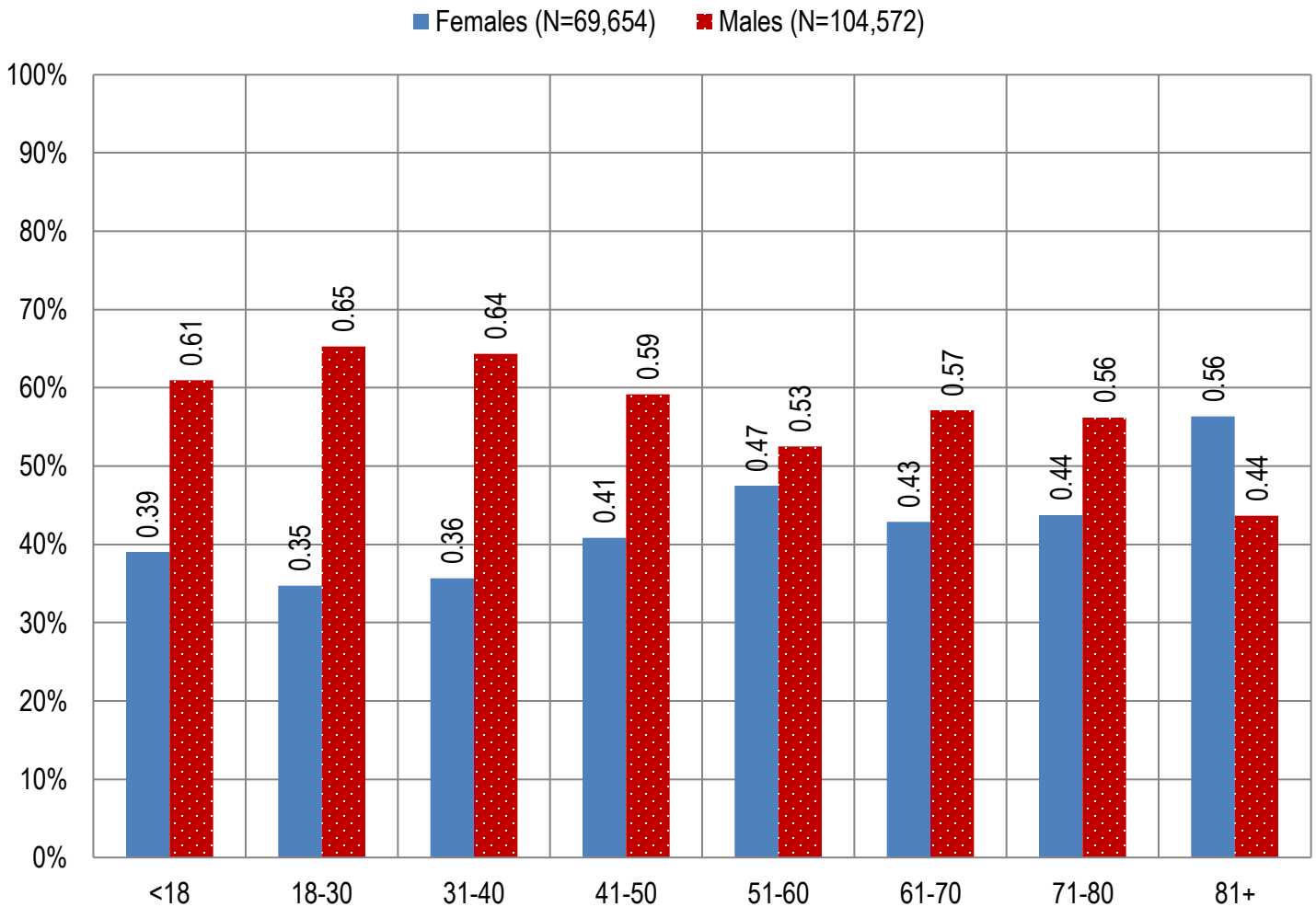


Table 4. Arizona Medical Marijuana Active Qualifying Patients Medical Condition Profile

Patient medical condition profile of Active Cardholders [¶]	Totals	Percent Total
Alzheimer's	62	0.04%
Cachexia	133	0.08%
Cancer	3,894	2.24%
Chronic Pain	151,780	87.12%
Crohn's Disease	556	0.32%
Glaucoma	1,068	0.61%
Hepatitis C	798	0.46%
HIV/AIDS	648	0.37%
Muscle Spasms	897	0.51%
Nausea	799	0.46%
Post-Traumatic Stress Disorder (PTSD)	2,201	1.26%
Sclerosis	40	0.02%
Seizures	1,224	0.70%
Two Or More Conditions	10,126	5.81%
TOTAL	174,226	100.00%

[¶]Unique debilitating conditions

Figure 2. Arizona Medical Marijuana Active Designated Caregiver Characteristics by Gender and Age (N = 894)

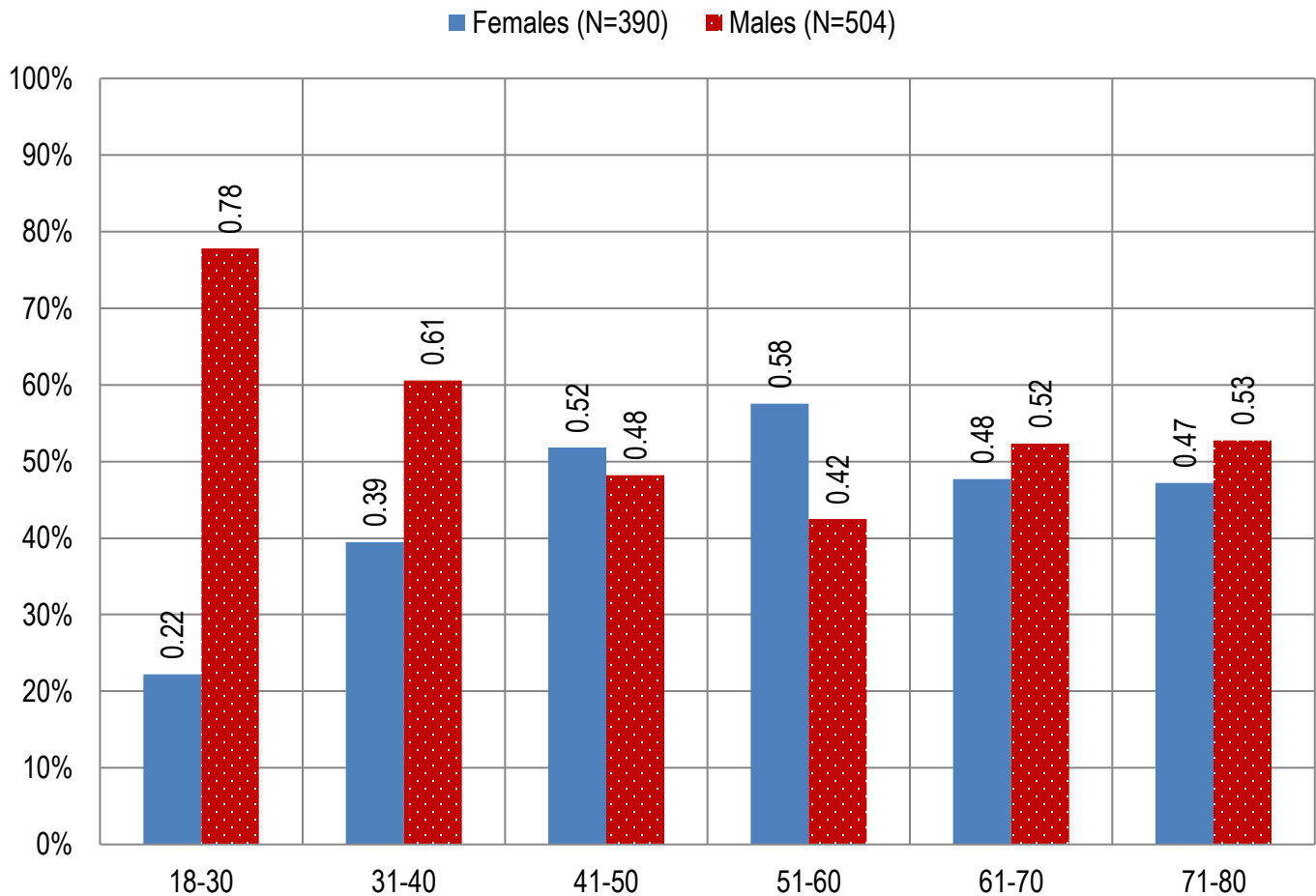


Table 5. Arizona Medical Marijuana Active Qualifying Patients and Designated Caregivers Authorized for Cultivation

Active cardholders cultivation status	Totals	Percent Total
Qualifying patients (n =174,226)	2,057	1.18%
Caregivers (n =894)	404	45.19%

Table 6. Frequency of Qualifying Patients, Caregivers, and Dispensary Agents by County of Residence

County	Qualifying Patients	Caregivers	Dispensary Agents*
Apache County	841	Count under 20	Count under 20
Cochise County	2,499	Count under 20	138
Coconino County	3,649	40	131
Gila County	1,710	Count under 20	34
Graham County	763	Count under 20	Count under 20
Greenlee County	182	Count under 20	Count under 20
La Paz County	346	Count under 20	Count under 20
Maricopa County	111,948	511	3,113
Mohave County	4,952	Count under 20	156
Navajo County	2,278	Count under 20	272
Pima County	24,223	144	553
Pinal County	9,969	44	200
Santa Cruz County	513	Count under 20	146
Yavapai County	8,786	42	380
Yuma County	1,567	Count under 20	Count under 20
TOTAL	174,226	894	5,219

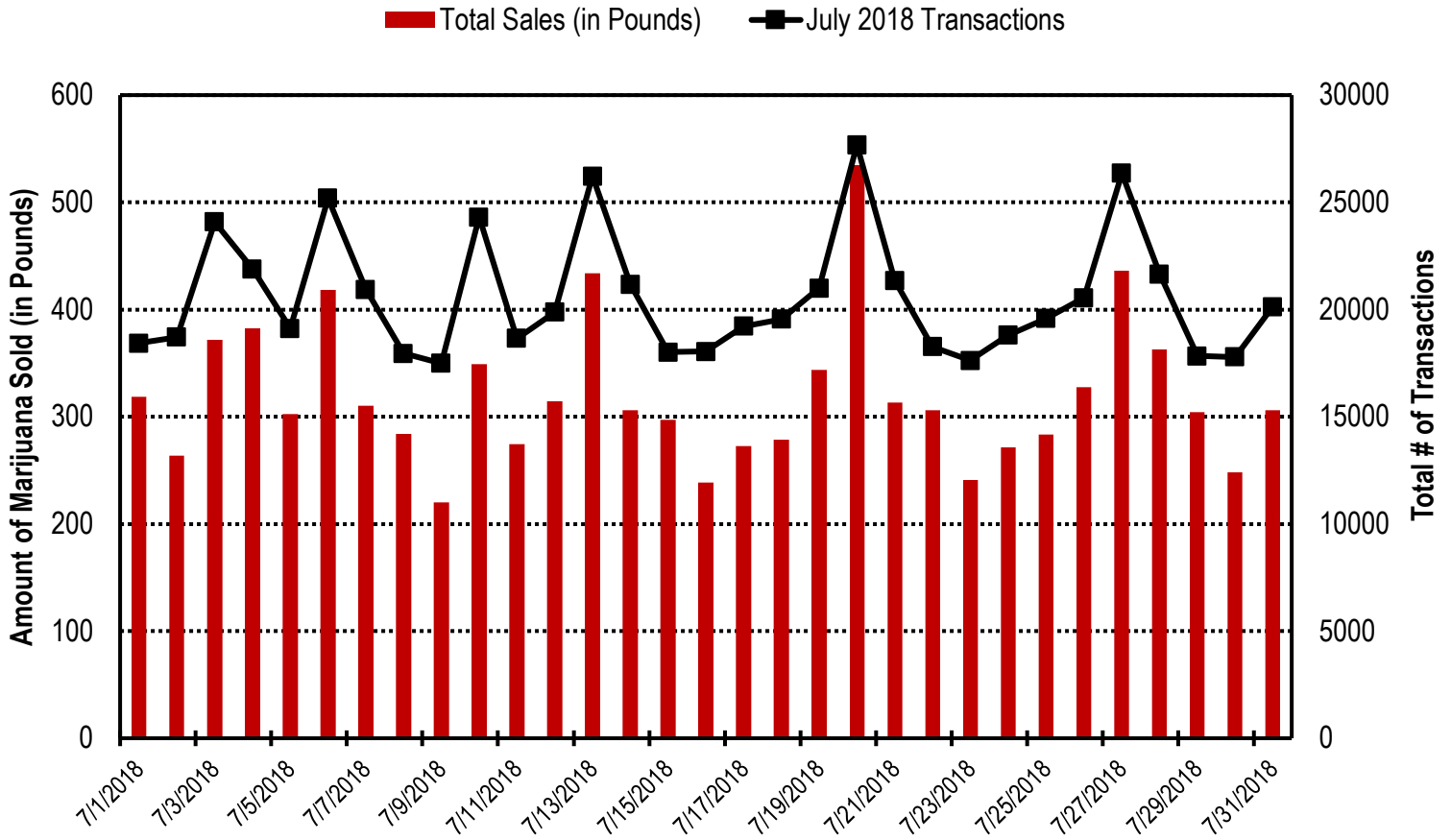
* 33 Dispensary Agents are located outside of Arizona.

Table 7. Type and Amount of Transactions at Medical Marijuana Dispensaries in June, 2018

Type of Transaction [†]	Ounces (oz.)	Pounds
Marijuana	145,628.47	9,101.78
Marijuana Edible	6,343.16	396.45
Marijuana Other	6,673.48	417.09
Total Marijuana Sold	158,645.11	9,915.32

[†]Amounts have been rounded and may not added to exact totals

Figure 4. Daily Transactions and Amount of Marijuana Sold in June, 2018



YEAR TO DATE

Table 1a. Arizona Medical Marijuana Applications Received- Application Profile

Applications Received Cardholder Profile	Totals	Percent Total
Qualifying patients (QPs)	120,941	95.00%
Caregivers (CGs)	1,364	1.07%
Dispensary Agents (DA)	4,995	3.92%
Total	127,300	100.00%

*Note: For caregivers and dispensary agents, these data reflect unique individuals, not the number of cards.

Table 1b. Arizona Medical Marijuana Licensed Qualifying Patients, Designated Caregivers and Dispensary Agents Profile

Applications Approved Cardholder Profile	Totals	Percent Total
Qualifying patients (QPs)	117,502	95.09%
Caregivers (CGs)	1,282	1.04%
Dispensary Agents (DA)	4,788	3.87%
Total	123,572	100.00%

*Note: For caregivers and dispensary agents, these data reflect unique individuals, not the number of cards.

Table 2. Arizona Medical Marijuana Licensed Qualifying Patient Profile

Applications Received for Qualifying Patients	Totals	Percent Total
New applications	67,753	57.66%
Renewal applications	42,980	36.58%
Changed demographics	2,797	2.38%
Added Caregivers	202	0.17%
Change Dup	3,747	3.19%
Replaced Caregivers	16	0.01%
Removed Caregivers	7	0.01%
Total	117,502	100.00%

Table 3a. Arizona Medical Marijuana Applications Received- Patient Characteristics

Characteristics of Applications Received who are Qualified Patients	Totals (N = 120,941)	Percent Total
Patient Age-groups		
Less than 18 years	138	0.11%
18 to 30 years	32,193	26.62%
31 to 40 years	25,513	21.10%
41 to 50 years	18,486	15.29%
51 to 60 years	19,222	15.89%
61 to 70 years	18,670	15.44%
71 to 80 years	5,631	4.66%
81 and older	1,088	0.90%
Patient Gender		
Male	72,582	60.01%
Female	48,359	39.99%

Table 3b. Arizona Medical Marijuana Licensed Qualifying Patient Characteristics

Characteristics of Approved Applications who are Qualified Patients	Totals (N = 117,502)	Percent Total
Patient Age-groups		
Less than 18 years	127	0.11%
18 to 30 years	31,350	26.68%
31 to 40 years	24,796	21.10%
41 to 50 years	17,972	15.30%
51 to 60 years	18,662	15.88%
61 to 70 years	18,122	15.42%
71 to 80 years	5,424	4.62%
81 and older	1,049	0.89%
Patient Gender		
Male	70,466	59.97%
Female	47,036	40.03%

Figure 1a. Arizona Medical Marijuana Applications Received- Patient Characteristics by Gender and Age (N =120,941)

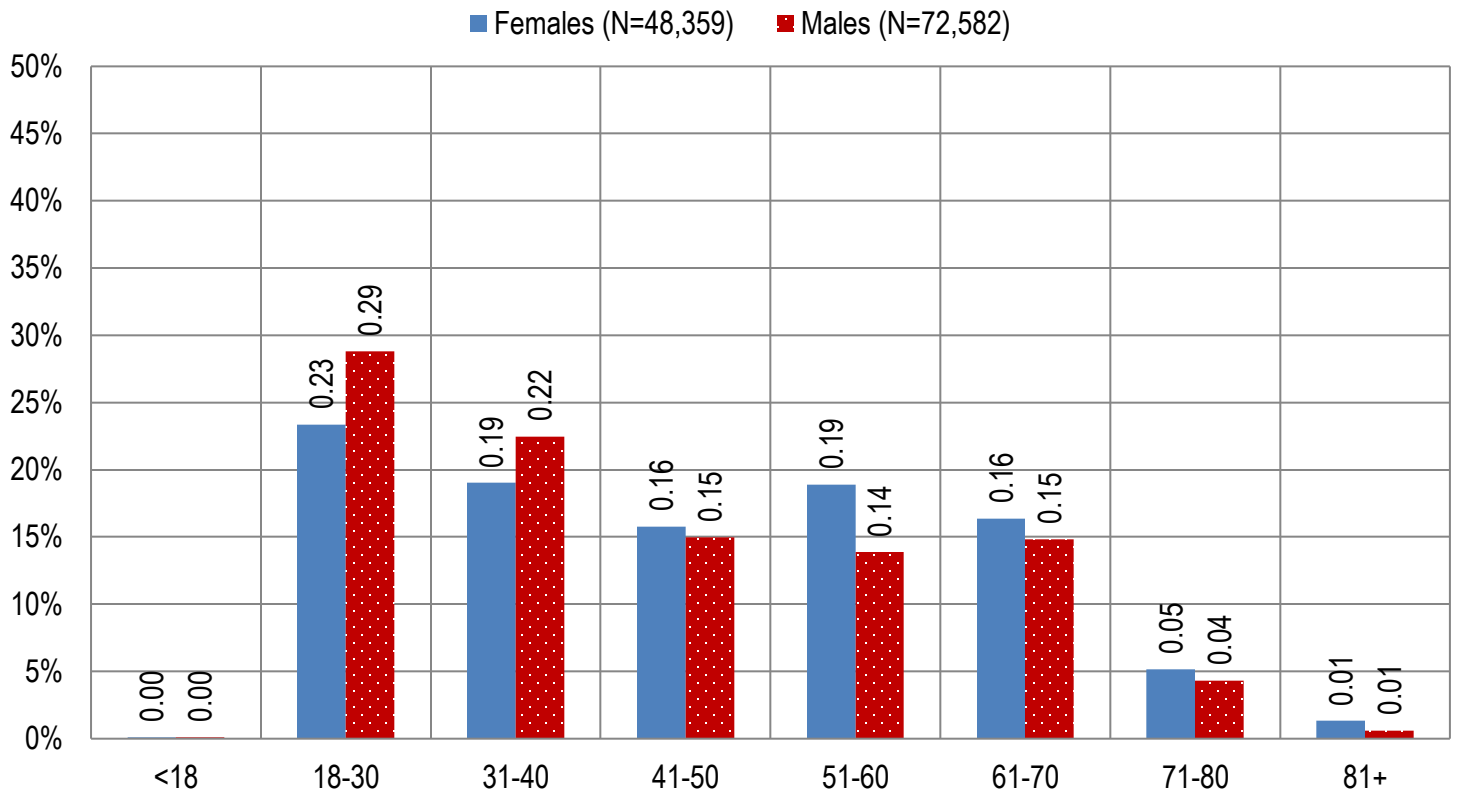


Figure 1b. Arizona Medical Marijuana Licensed Qualifying Patient Characteristics by Gender and Age (N =117,502)

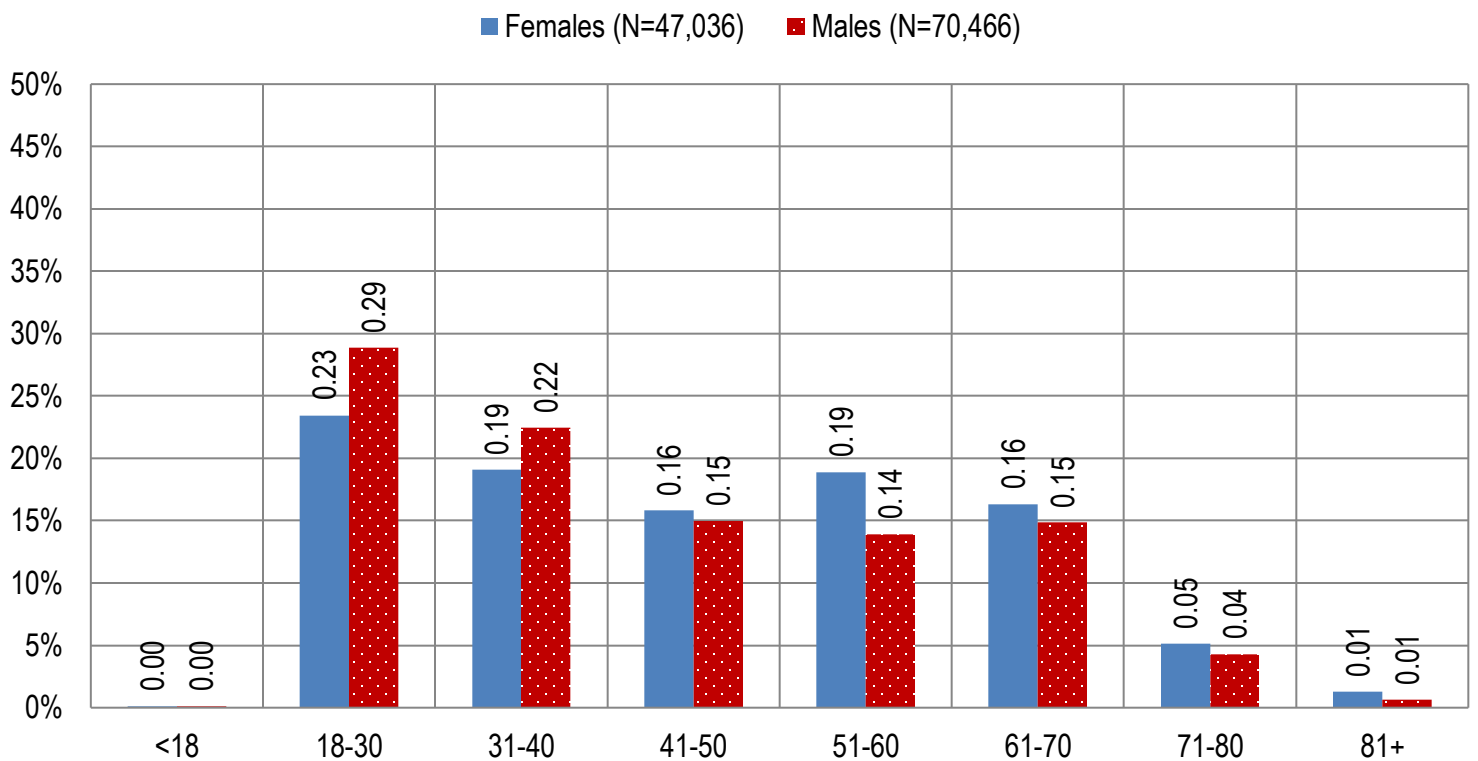


Figure 2a. Arizona Medical Marijuana Applications Received- Caregivers Characteristics by Gender and Age
(N = 1,364)

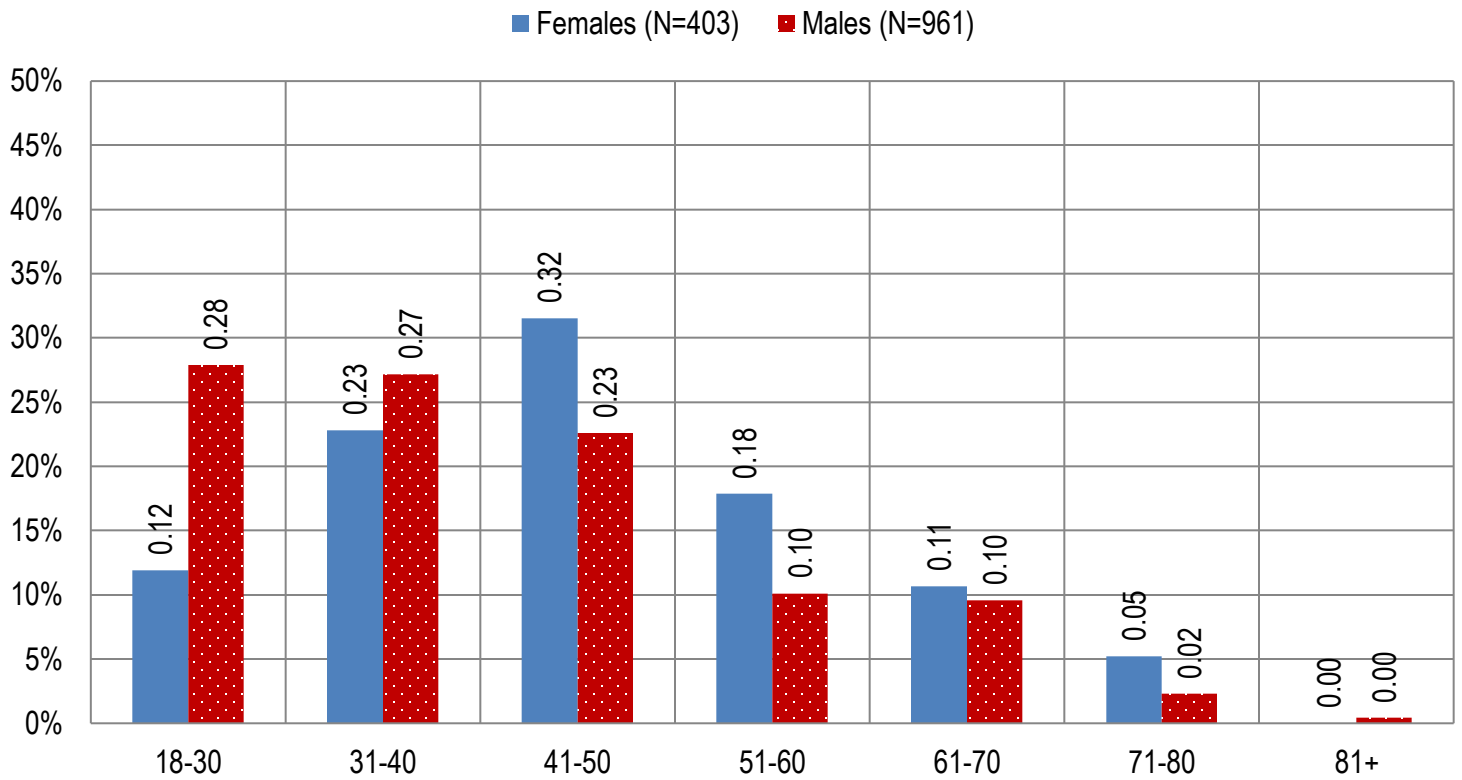


Figure 2b. Arizona Medical Marijuana Licensed Caregivers Characteristics by Gender and Age
(N = 1,282)

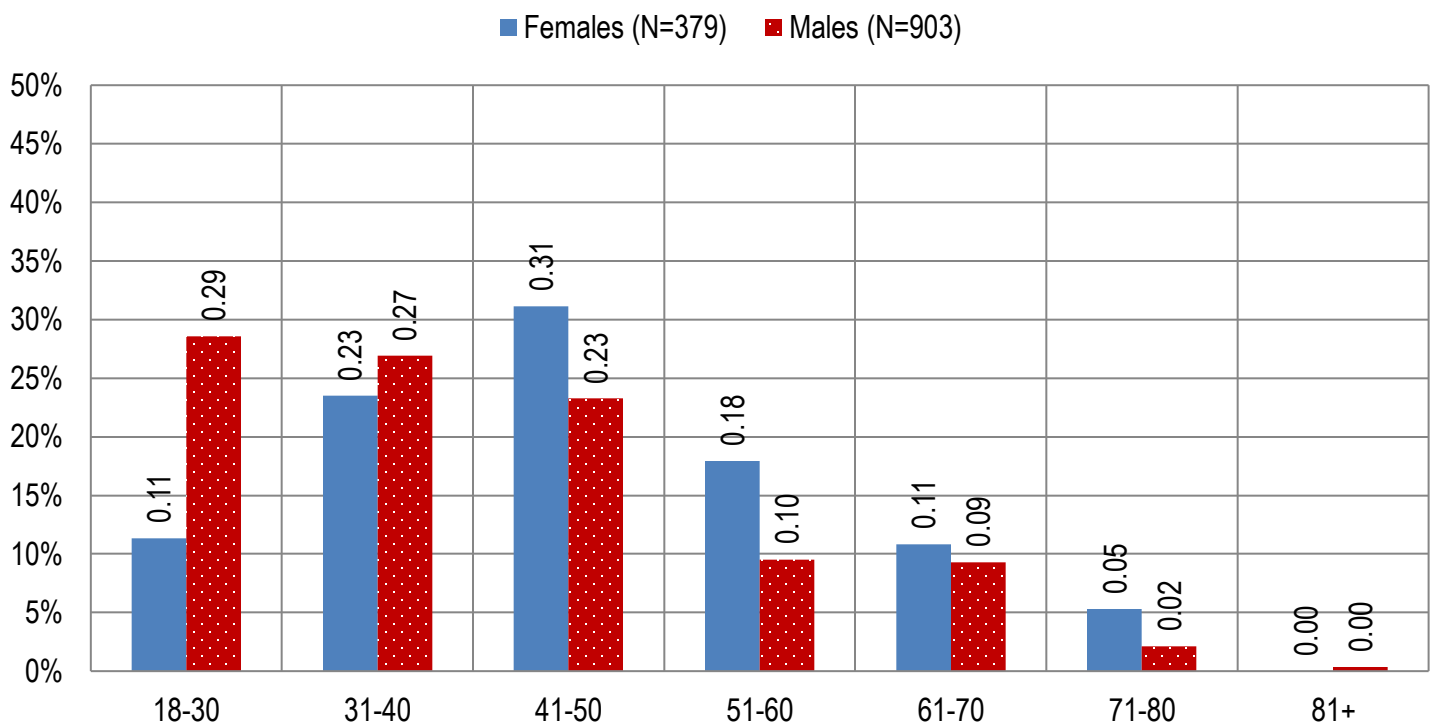


Table 4a. Arizona Medical Marijuana Applications Received- Patient Medical Conditions Profile

Patient medical condition profile of Applications Received [¶]	Totals	Percent Total
Alzheimer's	38	0.03%
Cachexia	85	0.07%
Cancer	2,512	2.08%
Chronic Pain	105,802	87.48%
Crohn's Disease	380	0.31%
Glaucoma	710	0.59%
Hepatitis C	523	0.43%
HIV/AIDS	455	0.38%
Muscle Spasms	542	0.45%
Nausea	524	0.43%
Post-Traumatic Stress Disorder (PTSD)	1,516	1.25%
Sclerosis	24	0.02%
Seizures	841	0.70%
Two Or More Conditions	6,989	5.78%
TOTAL	120,941	100.00%

[¶]Unique debilitating conditions

Table 4b. Arizona Medical Marijuana Licensed Qualifying Patients Medical Conditions Profile

Patient medical condition profile of Applications Approved[¶]	Totals	Percent Total
Alzheimer's	36	0.03%
Cachexia	85	0.07%
Cancer	2,420	2.06%
Chronic Pain	102,881	87.56%
Crohn's Disease	372	0.32%
Glaucoma	684	0.58%
Hepatitis C	508	0.43%
HIV/AIDS	443	0.38%
Muscle Spasms	527	0.45%
Nausea	507	0.43%
Post-Traumatic Stress Disorder (PTSD)	1,457	1.24%
Sclerosis	24	0.02%
Seizures	813	0.69%
Two Or More Conditions	6,745	5.74%
TOTAL	117,502	100.00%

[¶]Unique debilitating conditions

Table 5a. Arizona Medical Marijuana Applications Received for Applicants Seeking Authorization to Cultivate

Applications Received for cardholders with cultivation status	Totals	Percent total
Qualifying patients (n = 120,941)	1,558	1.29%

Table 5b. Arizona Medical Marijuana Licensed Qualifying Patients and Designated Caregivers Authorized for Cultivation

Approved cardholders cultivation status	Totals	Percent total
Qualifying patients (n = 117,502)	1,558	1.33%

Table 7a. Type and Amount of Transactions at Medical Marijuana Dispensaries in 2018 to Date

Type of Transaction [†]	Ounces (oz.)	Pounds
Marijuana	953,796.87	59,612.30
Marijuana Edible	46,169.74	2,885.61
Marijuana Other	42,934.08	2,683.38
Total Marijuana Sold	1,042,900.69	65,181.29

[†]Amounts have been rounded and may not added to exact totals

Figure 5. Transactions and Amount of Marijuana Sold in 2018 by Month

