

Arizona Medical Marijuana Program April 2018 Monthly Report

In December 2010, Arizona voters passed the Arizona Medical Marijuana Act (AMMA), A.R.S. §36-2801 *et seq.* The AMMA went into effect on April 14, 2011, making Arizona the fourteenth state to adopt a medical marijuana law. The AMMA designates the Arizona Department of Health Services (ADHS) as the licensing and issuing authority for the Arizona Medical Marijuana Program.

The AMMA monthly report highlights the most current program statistics. This includes data on active medical marijuana cardholders as well as transaction data from the sale of medical marijuana at non-profit medical marijuana dispensaries. Tables 1 through 6 and Figures 1 through 3 reflect data that are point in time. Table 7 and Figure 4 are data from the month of April, 2018. The Year-To-Date section which follows shows cumulative applications and approvals for 2018. For further information and statistics, please reference the Arizona Medical Marijuana Annual Report.

Table 1. Arizona Medical Marijuana Active Qualifying Patients, Designated Caregivers and Dispensary Agents Profile

Active Cardholder's Profile	Totals	Percent Total
1. Qualifying patients (QPs)	167,107	96.49%
2. Caregivers (CGs)	941	0.54%
3. Dispensary Agents (DA)	5,143	2.97%
Total	173,191	100.00%

*Note: For caregivers and dispensary agents, these data reflect unique individuals, not the number of cards.

Table 2. Arizona Medical Marijuana Active Qualifying Patients Profile

Application profile of qualifying patients	Totals	Percent Total
1. New applications	105,294	63.01%
2. Renewal applications	55,014	32.92%
3. Changed demographics	3,110	1.86%
4. Added Caregivers	229	0.14%
5. Change Dup	3,433	2.05%
6. Replaced Caregivers	21	0.01%
7. Removed Caregivers	6	0.00%
Total	167,107	100.00%

Approximately 11 percent (n = 18,894) of the active cardholders were determined to be SNAP eligible. Of the 18,358 that were determined to be eligible, 9,493 (~51%) were females and 9,401 (~49%) were males.

Table 3. Arizona Medical Marijuana Active Qualifying Patients Characteristics

Characteristics of Active Cardholders who are Qualified Patients	Totals (N =167,107)	Percent Total
Patient Age-groups		
Less than 18 years	215	0.13%
18 to 30 years	41,766	24.99%
31 to 40 years	34,636	20.73%
41 to 50 years	26,142	15.64%
51 to 60 years	27,453	16.43%
61 to 70 years	26,788	16.03%
71 to 80 years	8,401	5.03%
81 and older	1,706	1.02%
Patient Gender		
Male	101,266	60.60%
Female	65,841	39.40%

**Figure 1. Arizona Medical Marijuana Active Qualifying Patients Characteristics by Gender and Age
(N = 167,107)**

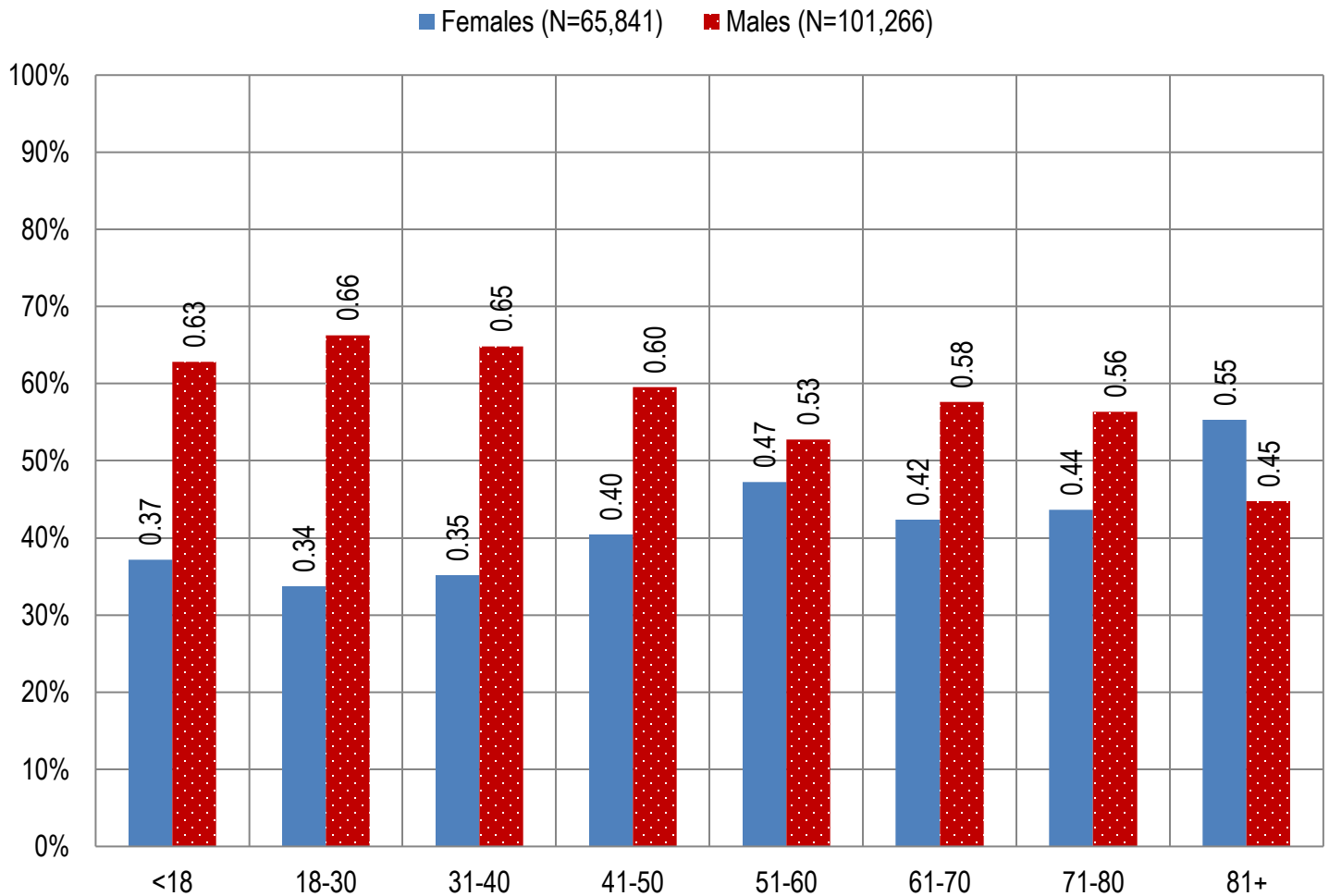


Table 4. Arizona Medical Marijuana Active Qualifying Patients Medical Condition Profile

Patient medical condition profile of Active Cardholders [¶]	Totals	Percent Total
Alzheimer's	62	0.04%
Cachexia	129	0.08%
Cancer	3,847	2.30%
Chronic Pain	144,626	86.55%
Crohn's Disease	545	0.33%
Glaucoma	1,061	0.63%
Hepatitis C	845	0.51%
HIV/AIDS	669	0.40%
Muscle Spasms	1,046	0.63%
Nausea	822	0.49%
Post-Traumatic Stress Disorder (PTSD)	2,145	1.28%
Sclerosis	43	0.03%
Seizures	1,249	0.75%
Two Or More Conditions	10,018	5.99%
TOTAL	167,107	100.00%

[¶]Unique debilitating conditions

Figure 2. Arizona Medical Marijuana Active Designated Caregiver Characteristics by Gender and Age (N = 941)

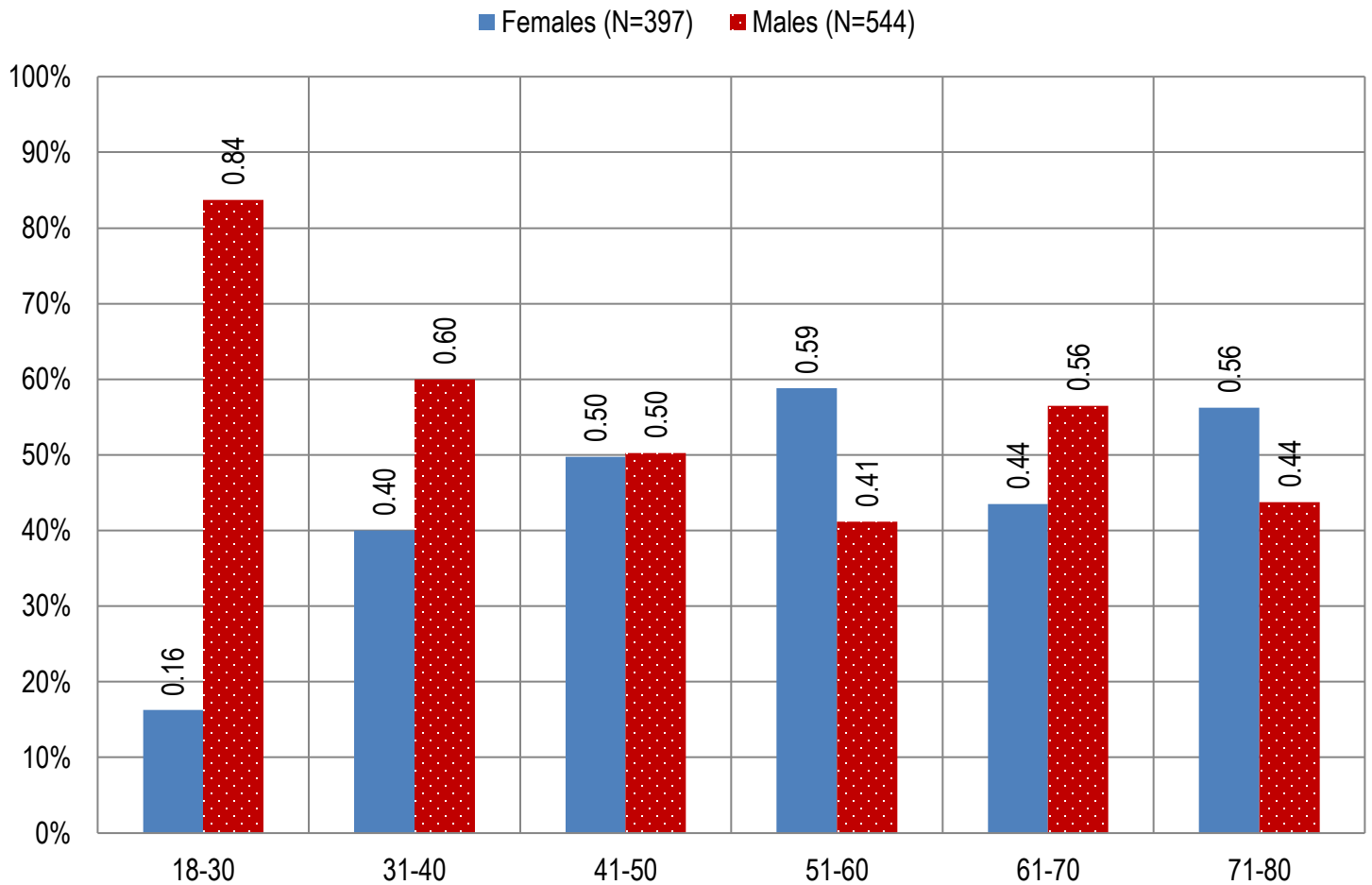


Table 5. Arizona Medical Marijuana Active Qualifying Patients and Designated Caregivers Authorized for Cultivation

Active cardholders cultivation status	Totals	Percent Total
Qualifying patients (n =167,107)	1,892	1.13%
Caregivers (n =941)	425	45.16%

Table 6. Frequency of Qualifying Patients, Caregivers, and Dispensary Agents by County of Residence

County	Qualifying Patients	Caregivers	Dispensary Agents*
Apache County	851	20	Count Under 20
Cochise County	2,370	Count Under 20	138
Coconino County	3,592	44	117
Gila County	1,587	21	33
Graham County	702	Count Under 20	Count Under 20
Greenlee County	170	Count Under 20	Count Under 20
La Paz County	352	Count Under 20	22
Maricopa County	107,170	547	3,060
Mohave County	5,048	Count Under 20	140
Navajo County	2,215	Count Under 20	296
Pima County	23,044	138	539
Pinal County	9,474	45	196
Santa Cruz County	486	Count Under 20	124
Yavapai County	8,508	44	396
Yuma County	1,538	Count Under 20	Count Under 20
TOTAL	167,107	941	5,143

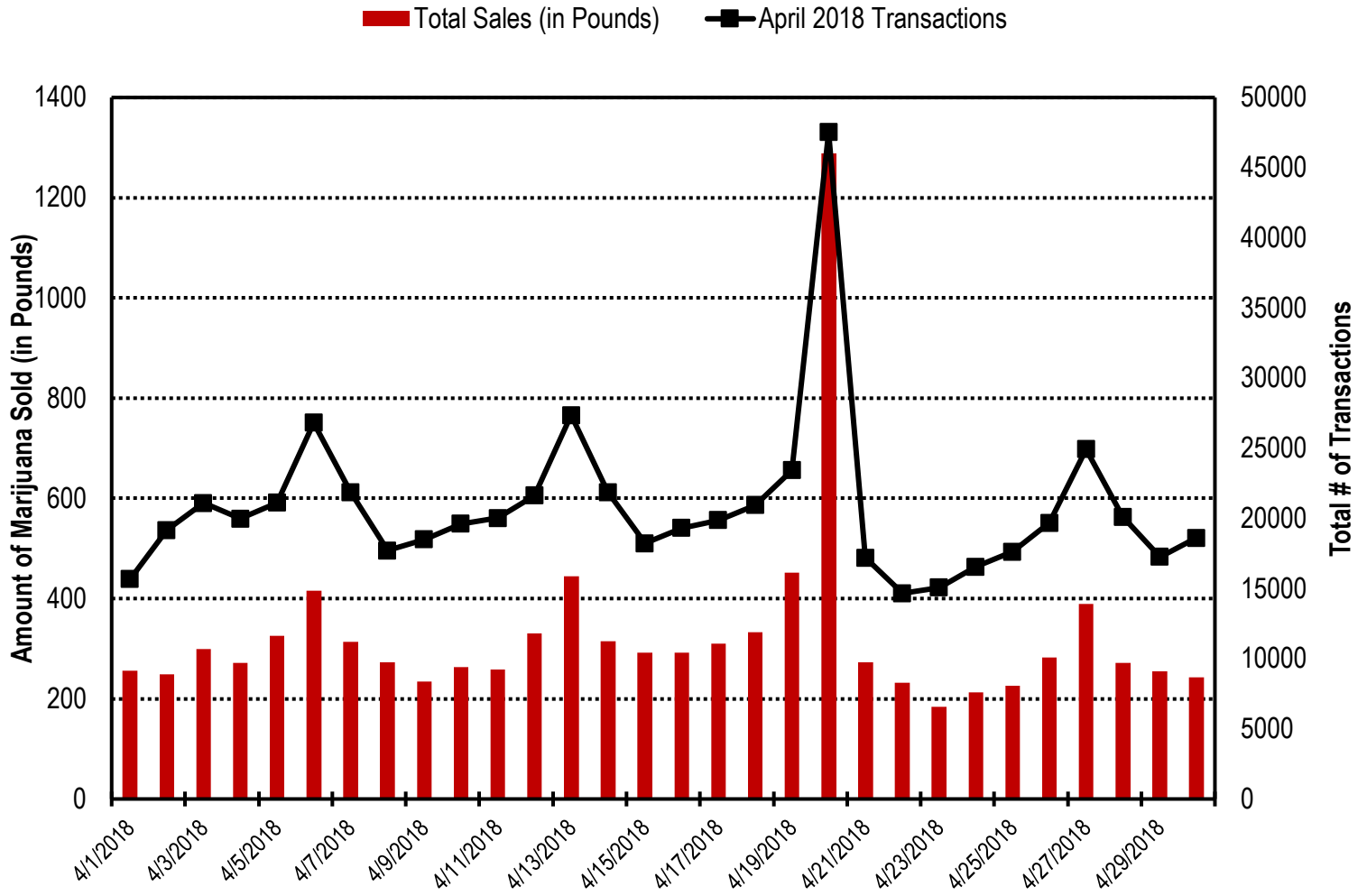
* 36 Dispensary Agents are located outside of Arizona.

Table 7. Type and Amount of Transactions at Medical Marijuana Dispensaries in April, 2018

Type of Transaction [†]	Ounces (oz.)	Pounds
Marijuana	142,798.09	8,924.88
Marijuana Edible	7,221.03	451.31
Marijuana Other	6,556.18	409.76
Total Marijuana Sold	156,575.30	9,785.96

[†]Amounts have been rounded and may not added to exact totals

Figure 4. Daily Transactions and Amount of Marijuana Sold in April, 2018



YEAR TO DATE

Table 1a. Arizona Medical Marijuana Applications Received- Application Profile

Applications Received Cardholder Profile	Totals	Percent Total
Qualifying patients (QPs)	70,684	95.12%
Caregivers (CGs)	769	1.03%
Dispensary Agents (DA)	2,856	3.84%
Total	74,309	100.00%

*Note: For caregivers and dispensary agents, these data reflect unique individuals, not the number of cards.

Table 1b. Arizona Medical Marijuana Licensed Qualifying Patients, Designated Caregivers and Dispensary Agents Profile

Applications Approved Cardholder Profile	Totals	Percent Total
Qualifying patients (QPs)	68,680	95.37%
Caregivers (CGs)	682	0.95%
Dispensary Agents (DA)	2,652	3.68%
Total	72,014	100.00%

*Note: For caregivers and dispensary agents, these data reflect unique individuals, not the number of cards.

Table 2. Arizona Medical Marijuana Licensed Qualifying Patient Profile

Applications Received for Qualifying Patients	Totals	Percent Total
New applications	39,919	58.12%
Renewal applications	24,995	36.39%
Changed demographics	1,593	2.32%
Added Caregivers	116	0.17%
Change Dup	2,045	2.98%
Replaced Caregivers	6	0.01%
Removed Caregivers	6	0.01%
Total	68,680	100.00%

Table 3a. Arizona Medical Marijuana Applications Received- Patient Characteristics

Characteristics of Applications Received who are Qualified Patients	Totals (N = 70,684)	Percent Total
Patient Age-groups		
Less than 18 years	80	0.11%
18 to 30 years	19,662	27.82%
31 to 40 years	15,334	21.69%
41 to 50 years	10,752	15.21%
51 to 60 years	10,883	15.40%
61 to 70 years	10,342	14.63%
71 to 80 years	3,061	4.33%
81 and older	570	0.81%
Patient Gender		
Male	42,546	60.19%
Female	28,138	39.81%

Table 3b. Arizona Medical Marijuana Licensed Qualifying Patient Characteristics

Characteristics of Approved Applications who are Qualified Patients	Totals (N = 68,680)	Percent Total
Patient Age-groups		
Less than 18 years	67	0.10%
18 to 30 years	19,111	27.83%
31 to 40 years	14,925	21.73%
41 to 50 years	10,433	15.19%
51 to 60 years	10,570	15.39%
61 to 70 years	10,065	14.65%
71 to 80 years	2,953	4.30%
81 and older	556	0.81%
Patient Gender		
Male	41,397	60.28%
Female	27,283	39.72%

Figure 1a. Arizona Medical Marijuana Applications Received- Patient Characteristics by Gender and Age

(N =70,684)

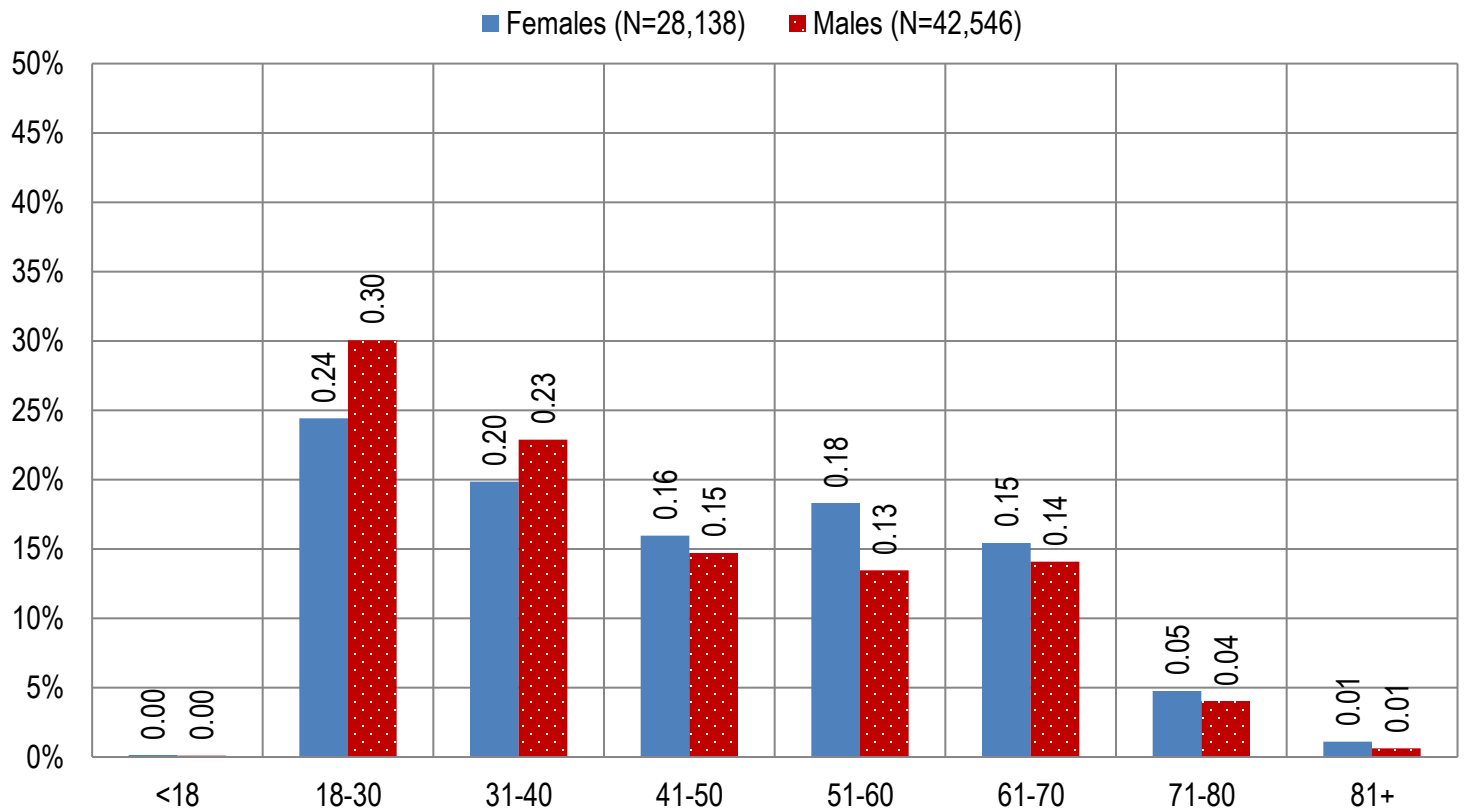


Figure 1b. Arizona Medical Marijuana Licensed Qualifying Patient Characteristics by Gender and Age

(N =68,680)

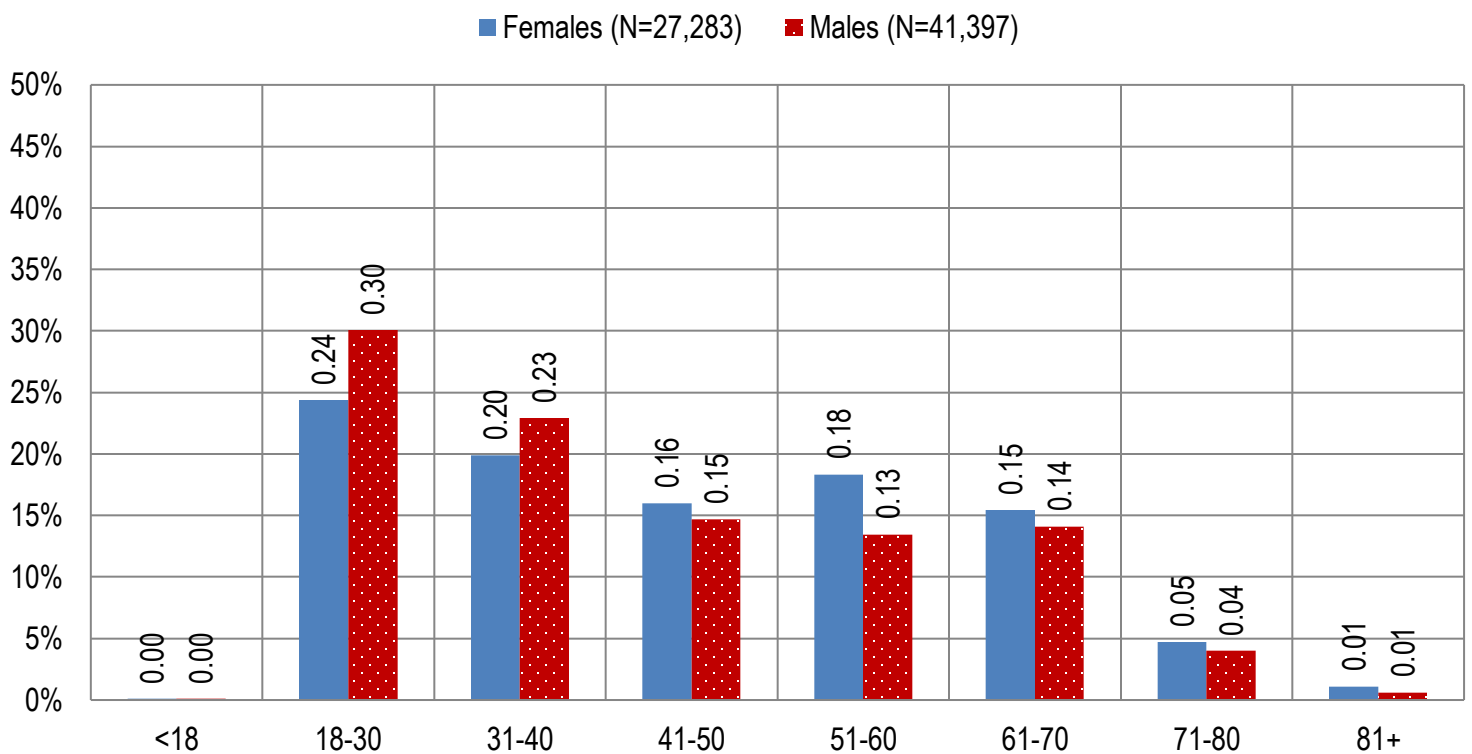


Figure 2a. Arizona Medical Marijuana Applications Received- Caregivers Characteristics by Gender and Age

(N = 769)

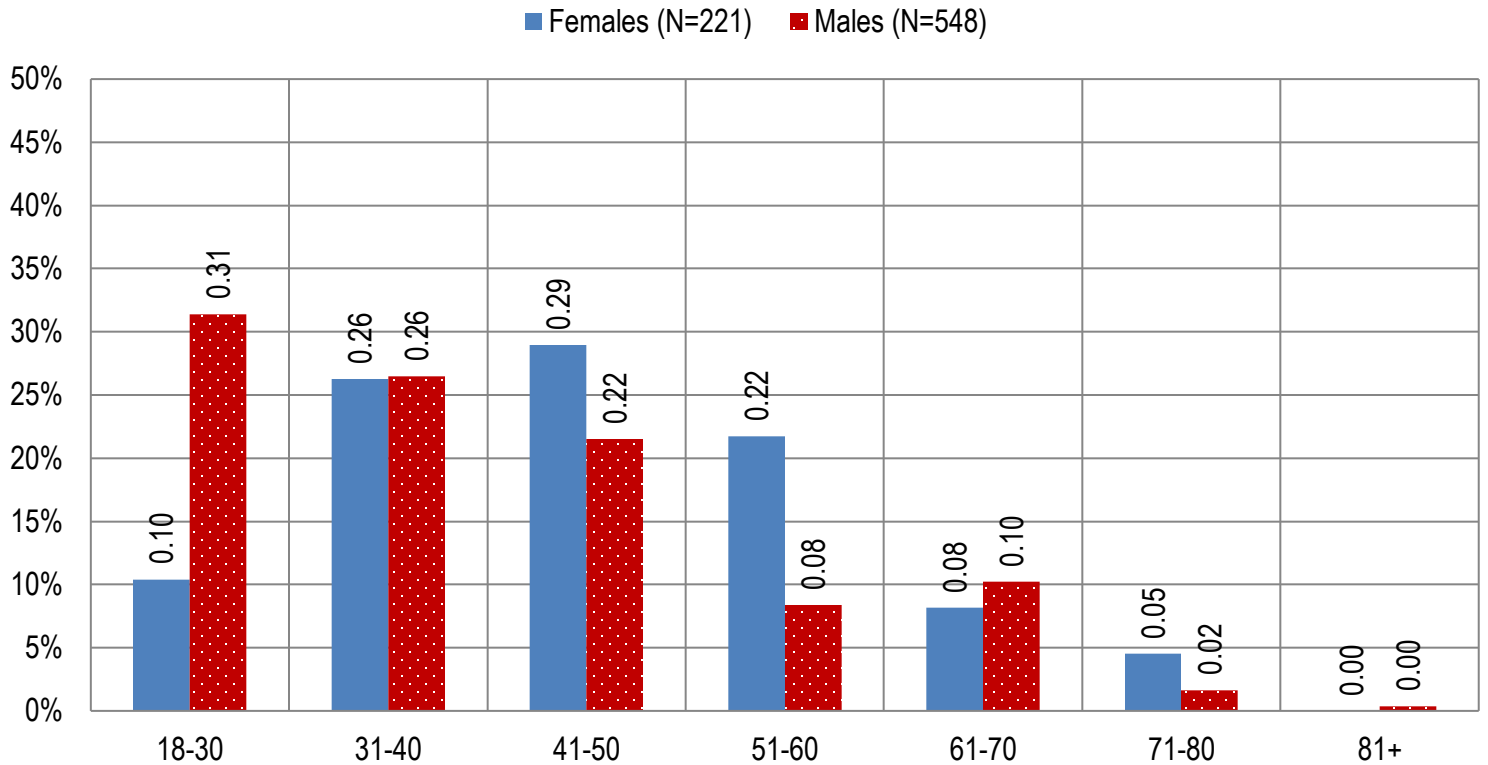


Figure 2b. Arizona Medical Marijuana Licensed Caregivers Characteristics by Gender and Age

(N = 682)

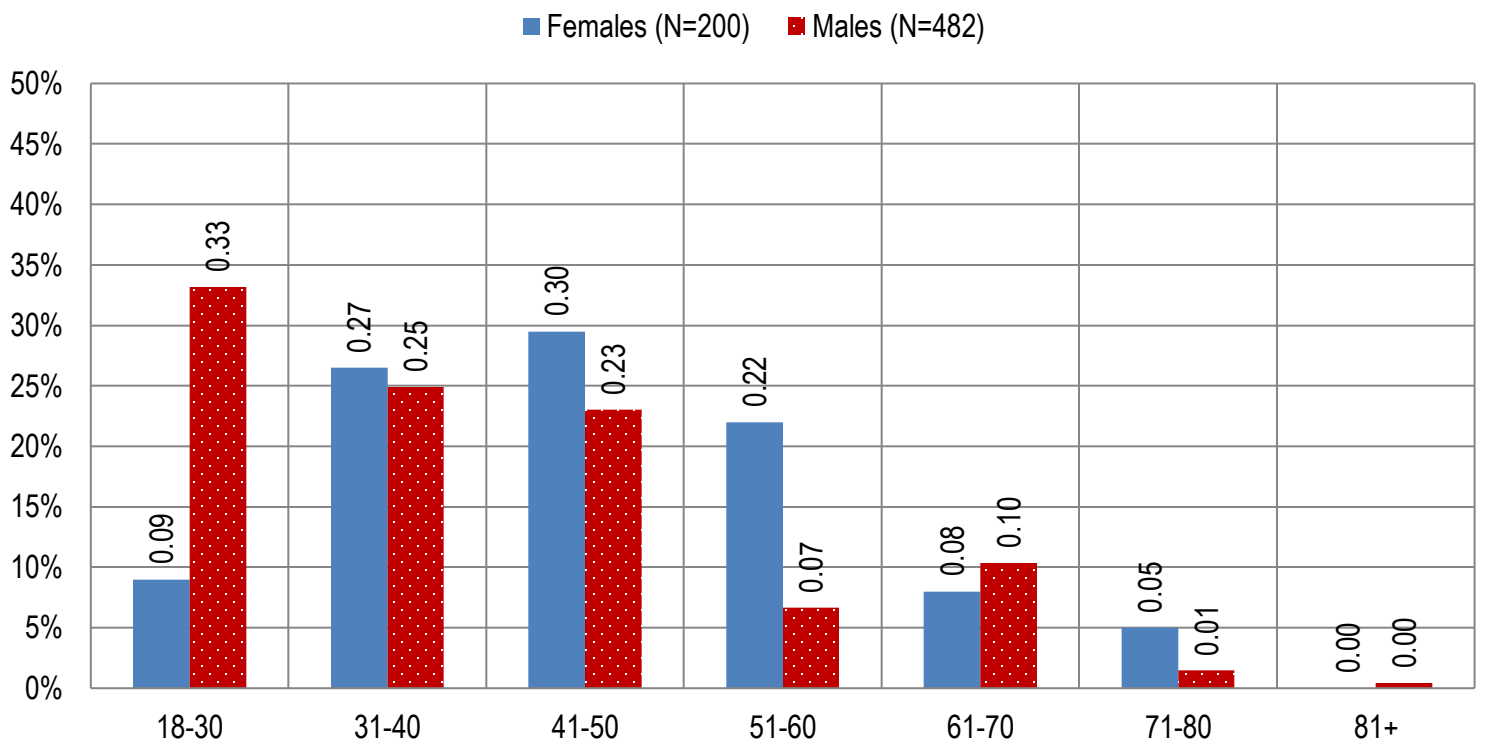


Table 4a. Arizona Medical Marijuana Applications Received- Patient Medical Conditions Profile

Patient medical condition profile of Applications Received [¶]	Totals	Percent Total
Alzheimer's	23	0.03%
Cachexia	52	0.07%
Cancer	1,432	2.03%
Chronic Pain	62,037	87.77%
Crohn's Disease	209	0.30%
Glaucoma	409	0.58%
Hepatitis C	308	0.44%
HIV/AIDS	280	0.40%
Muscle Spasms	339	0.48%
Nausea	308	0.44%
Post-Traumatic Stress Disorder (PTSD)	881	1.25%
Sclerosis	12	0.02%
Seizures	525	0.74%
Two Or More Conditions	3,869	5.47%
TOTAL	70,684	100.00%

[¶]Unique debilitating conditions

Table 4b. Arizona Medical Marijuana Licensed Qualifying Patients Medical Conditions Profile

Patient medical condition profile of Applications Approved[¶]	Totals	Percent Total
Alzheimer's	22	0.03%
Cachexia	49	0.07%
Cancer	1,378	2.01%
Chronic Pain	60,326	87.84%
Crohn's Disease	202	0.29%
Glaucoma	396	0.58%
Hepatitis C	301	0.44%
HIV/AIDS	273	0.40%
Muscle Spasms	325	0.47%
Nausea	301	0.44%
Post-Traumatic Stress Disorder (PTSD)	851	1.24%
Sclerosis	12	0.02%
Seizures	508	0.74%
Two Or More Conditions	3,736	5.44%
TOTAL	68,680	100.00%

[¶]Unique debilitating conditions

Table 5a. Arizona Medical Marijuana Applications Received for Applicants Seeking Authorization to Cultivate

Applications Received for cardholders with cultivation status	Totals	Percent total
Qualifying patients (n = 70,684)	822	1.16%

Table 5b. Arizona Medical Marijuana Licensed Qualifying Patients and Designated Caregivers Authorized for Cultivation

Approved cardholders cultivation status	Totals	Percent total
Qualifying patients (n = 68,680)	822	1.20%

Table 7a. Type and Amount of Transactions at Medical Marijuana Dispensaries in 2018 to Date

Type of Transaction [†]	Ounces (oz.)	Pounds
Marijuana	524,081.03	32,755.06
Marijuana Edible	26,114.29	1,632.14
Marijuana Other	23,204.57	1,450.29
Total Marijuana Sold	573,399.89	35,837.49

[†]Amounts have been rounded and may not added to exact totals

Figure 5. Transactions and Amount of Marijuana Sold in 2018 by Month

