

Arizona Medical Marijuana Program October 2017 Monthly Report

In November 2010, Arizona voters passed the Arizona Medical Marijuana Act (AMMA), A.R.S. §36-2801 *et seq.* The AMMA went into effect on April 14, 2011, making Arizona the fourteenth state to adopt a medical marijuana law. The AMMA designates the Arizona Department of Health Services (ADHS) as the licensing and issuing authority for the Arizona Medical Marijuana Program.

The AMMA monthly report highlights the most current program statistics. This includes data on active medical marijuana cardholders as well as transaction data from the sale of medical marijuana at non-profit medical marijuana dispensaries. Tables 1 through 6 and Figures 1 through 3 reflect data that are point in time. Table 7 and Figure 4 are data from the month of October, 2017. The Year-To-Date section which follows shows cumulative applications and approvals for 2017. For further information and statistics, please reference the Arizona Medical Marijuana Annual Report.

Table 1. Arizona Medical Marijuana Active Qualifying Patients, Designated Caregivers and Dispensary Agents Profile

Active Cardholder's Profile	Totals	Percent Total
1. Qualifying patients (QPs)	147,070	96.44%
2. Caregivers (CGs)	939	0.62%
3. Dispensary Agents (DA)	4,493	2.95%
Total	152,502	100.00%

*Note: For caregivers and dispensary agents, these data reflect unique individuals, not the number of cards.

Table 2. Arizona Medical Marijuana Active Qualifying Patients Profile

Application profile of qualifying patients	Totals	Percent Total
1. New applications	96,561	65.66%
2. Renewal applications	44,237	30.08%
3. Changed demographics	2,746	1.87%
4. Added Caregivers	263	0.18%
5. Change Dup	3,233	2.20%
6. Replaced Caregivers	26	0.02%
7. Removed Caregivers	4	0.00%
Total	147,070	100.00%

Approximately 11 percent (n = 16,548) of the active cardholders were determined to be SNAP eligible. Of the 16,548 that were determined to be eligible, 8,031 (~48%) were females and 8,517 (~52%) were males.

Table 3. Arizona Medical Marijuana Active Qualifying Patients Characteristics

Characteristics of Active Cardholders who are Qualified Patients	Totals (N =147,070)	Percent Total
Patient Age-groups		
Less than 18 years	210	0.14%
18 to 30 years	36,111	24.55%
31 to 40 years	30,254	20.57%
41 to 50 years	22,962	15.61%
51 to 60 years	24,908	16.94%
61 to 70 years	24,129	16.41%
71 to 80 years	6,947	4.72%
81 and older	1,549	1.05%
Patient Gender		
Male	90,482	61.52%
Female	56,588	38.48%

**Figure 1. Arizona Medical Marijuana Active Qualifying Patients Characteristics by Gender and Age
(N = 147,070)**

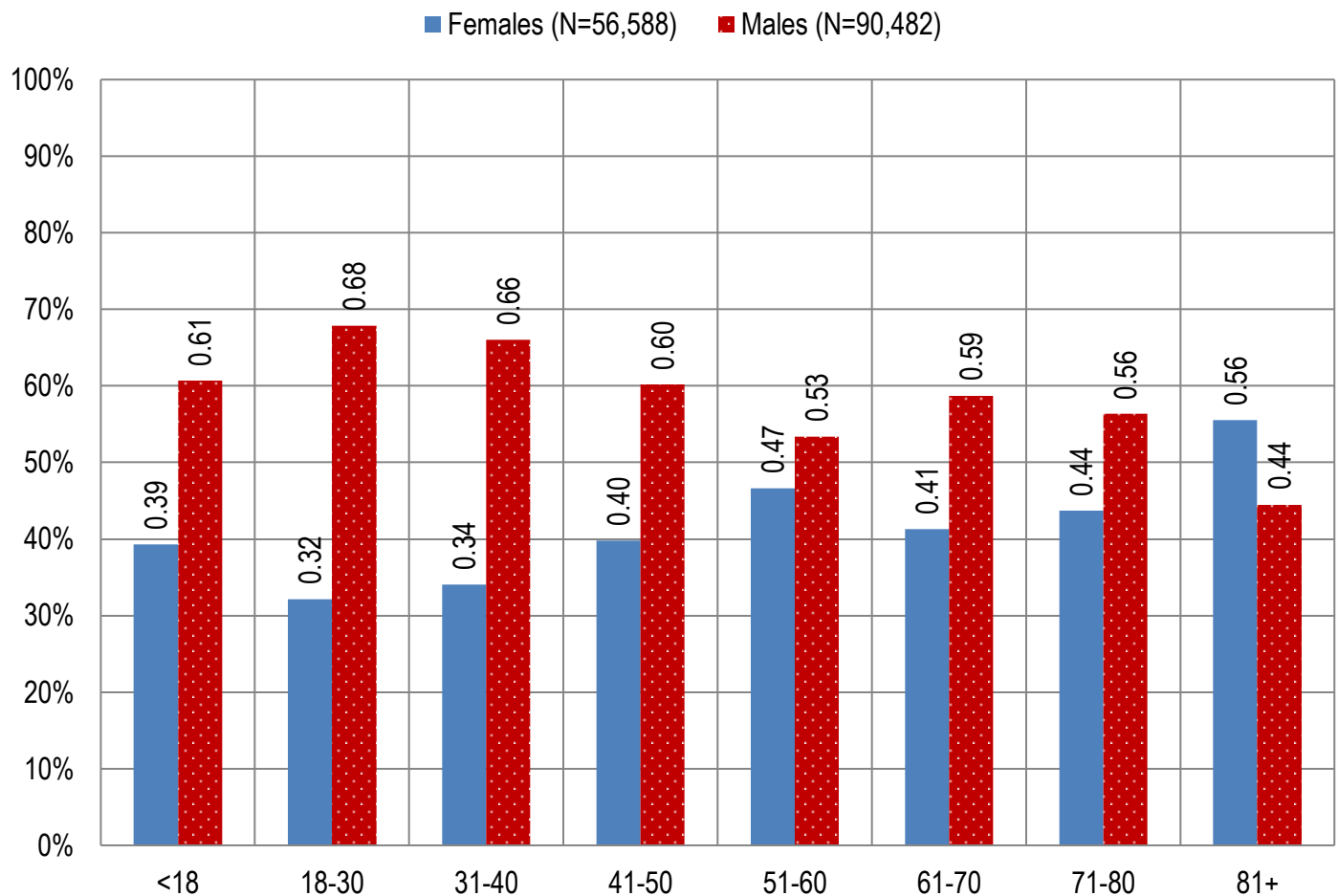


Table 4. Arizona Medical Marijuana Active Qualifying Patients Medical Condition Profile

Patient medical condition profile of Active Cardholders [¶]	Totals	Percent Total
Alzheimer's	64	0.04%
Cachexia	119	0.08%
Cancer	3,681	2.50%
Chronic Pain	124,446	84.62%
Crohn's Disease	521	0.35%
Glaucoma	980	0.67%
Hepatitis C	909	0.62%
HIV/AIDS	614	0.42%
Muscle Spasms	1,175	0.80%
Nausea	797	0.54%
Post-Traumatic Stress Disorder (PTSD)	1,974	1.34%
Sclerosis	46	0.03%
Seizures	1,161	0.79%
Two Or More Conditions	10,583	7.20%
TOTAL	147,070	100.00%

[¶]Unique debilitating conditions

**Figure 2. Arizona Medical Marijuana Active Designated Caregiver Characteristics by Gender and Age
(N = 939)**

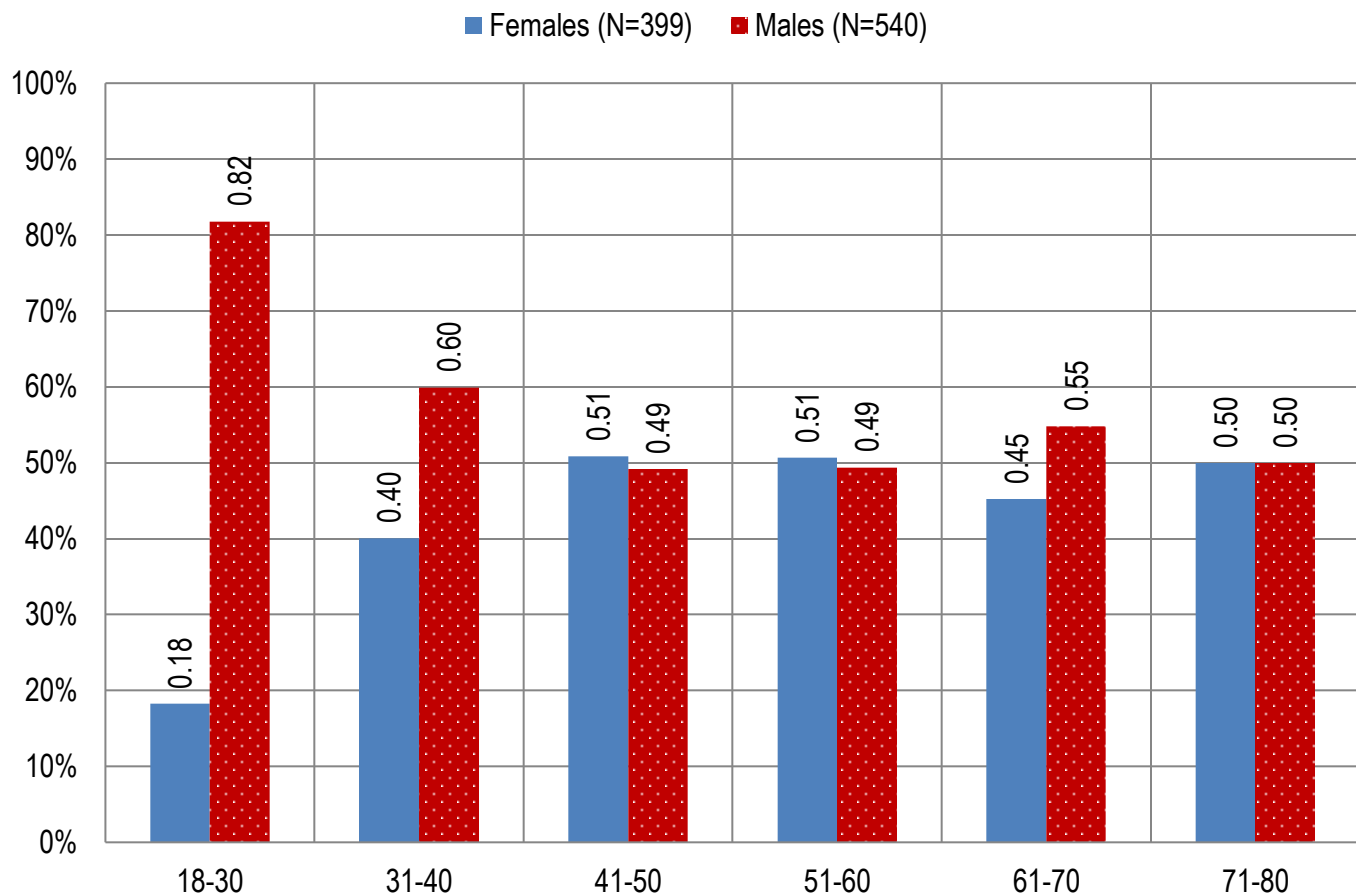


Table 5. Arizona Medical Marijuana Active Qualifying Patients and Designated Caregivers Authorized for Cultivation

Active cardholders cultivation status	Totals	Percent Total
Qualifying patients (n =147,070)	1,670	1.14%
Caregivers (n =939)	400	42.49%

Table 6. Frequency of Qualifying Patients, Caregivers, and Dispensary Agents by County of Residence

County	Qualifying Patients	Caregivers	Dispensary Agents*
Apache County	792	Count Under 20	Count Under 20
Cochise County	2,151	Count Under 20	108
Coconino County	3,233	36	110
Gila County	1,434	Count Under 20	38
Graham County	576	Count Under 20	Count Under 20
Greenlee County	155	Count Under 20	Count Under 20
La Paz County	376	Count Under 20	20
Maricopa County	93,161	559	2,661
Mohave County	5,123	Count Under 20	134
Navajo County	1,950	20	278
Pima County	20,428	126	453
Pinal County	8,093	45	167
Santa Cruz County	446	Count Under 20	92
Yavapai County	7,643	58	367
Yuma County	1,509	Count Under 20	Count Under 20
TOTAL	147,070	939	4,493

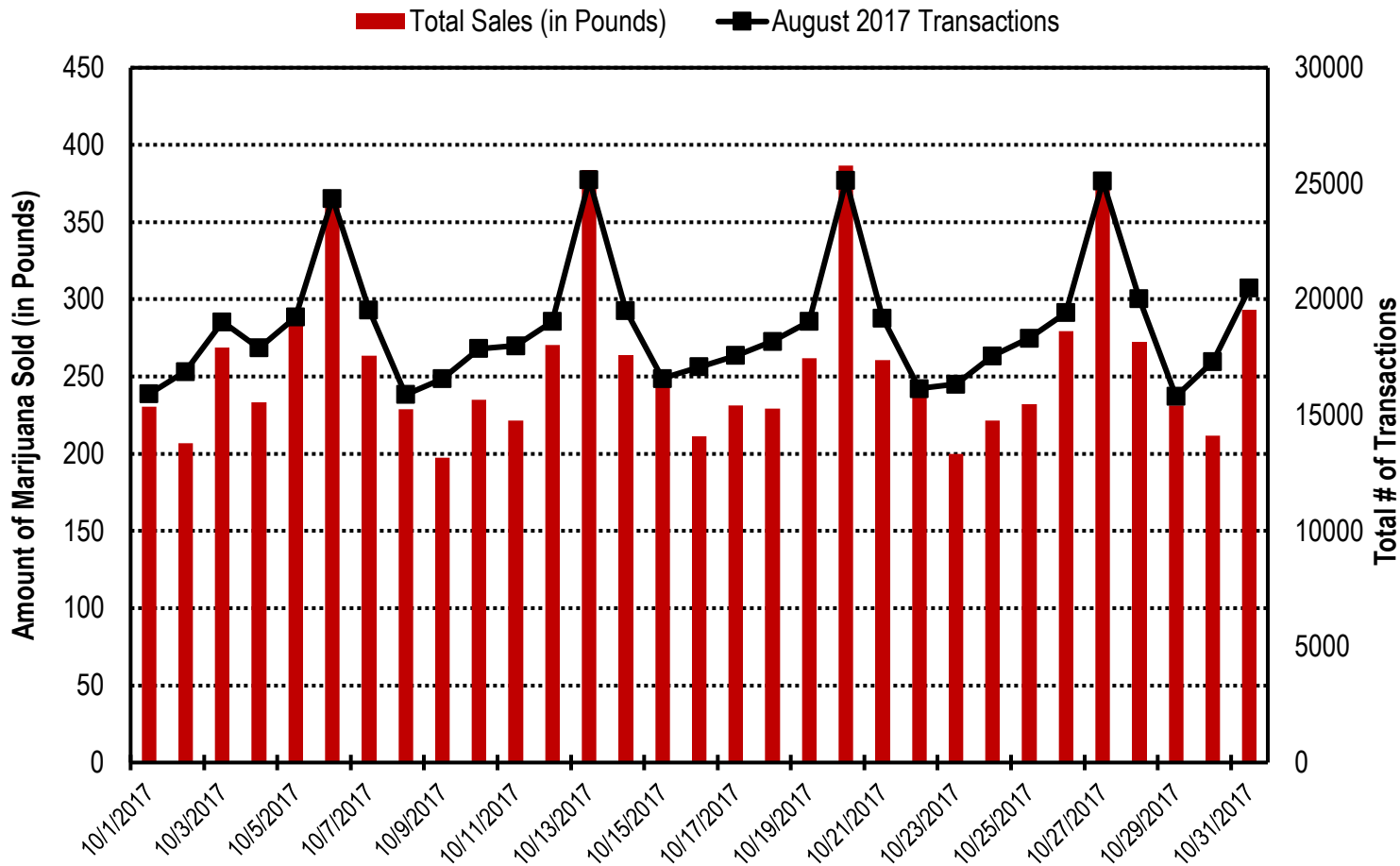
* 32 Dispensary Agents are located outside of Arizona.

Table 7. Type and Amount of Transactions at Medical Marijuana Dispensaries in May, 2017

Type of Transaction [†]	Ounces (oz.)	Pounds
Marijuana	119,051.69	7,440.73
Marijuana Edible	5,302.32	331.39
Marijuana Other	4,298.78	268.67
Total Marijuana Sold	128,652.78	8,040.80

[†]Amounts have been rounded and may not added to exact totals

Figure 4. Daily Transactions and Amount of Marijuana Sold in October, 2017



YEAR TO DATE

Table 1a. Arizona Medical Marijuana Applications Received- Application Profile

Applications Received Cardholder Profile	Totals	Percent Total
Qualifying patients (QPs)	137,740	94.36%
Caregivers (CGs)	1,852	1.27%
Dispensary Agents (DA)	6,376	4.37%
Total	145,968	100.00%

*Note: For caregivers and dispensary agents, these data reflect unique individuals, not the number of cards.

Table 1b. Arizona Medical Marijuana Licensed Qualifying Patients, Designated Caregivers and Dispensary Agents Profile

Applications Approved Cardholder Profile	Totals	Percent Total
Qualifying patients (QPs)	135,706	94.57%
Caregivers (CGs)	1,771	1.23%
Dispensary Agents (DA)	6,018	4.19%
Total	143,495	100.00%

*Note: For caregivers and dispensary agents, these data reflect unique individuals, not the number of cards.

Table 2. Arizona Medical Marijuana Licensed Qualifying Patient Profile

Applications Received for Qualifying Patients	Totals	Percent Total
New applications	86,172	63.50%
Renewal applications	41,524	30.60%
Changed demographics	3,276	2.41%
Added Caregivers	364	0.27%
Change Dup	4,323	3.19%
Replaced Caregivers	40	0.03%
Removed Caregivers	7	0.01%
Total	135,706	100.00%

Table 3a. Arizona Medical Marijuana Applications Received- Patient Characteristics

Characteristics of Applications Received who are Qualified Patients	Totals (N = 137,740)	Percent Total
Patient Age-groups		
Less than 18 years	212	0.15%
18 to 30 years	36,696	26.64%
31 to 40 years	28,372	20.60%
41 to 50 years	21,036	15.27%
51 to 60 years	23,156	16.81%
61 to 70 years	21,208	15.40%
71 to 80 years	5,792	4.21%
81 and older	1,268	0.92%
Patient Gender		
Male	84,720	61.51%
Female	53,020	38.49%

Table 3b. Arizona Medical Marijuana Licensed Qualifying Patient Characteristics

Characteristics of Approved Applications who are Qualified Patients	Totals (N = 135,706)	Percent Total
Patient Age-groups		
Less than 18 years	196	0.14%
18 to 30 years	36,166	26.65%
31 to 40 years	27,957	20.60%
41 to 50 years	20,758	15.30%
51 to 60 years	22,812	16.81%
61 to 70 years	20,904	15.40%
71 to 80 years	56,79	4.18%
81 and older	1,234	0.91%
Patient Gender		
Male	83,547	61.56%
Female	52,159	38.44%

Figure 1a. Arizona Medical Marijuana Applications Received- Patient Characteristics by Gender and Age (N =137,740)

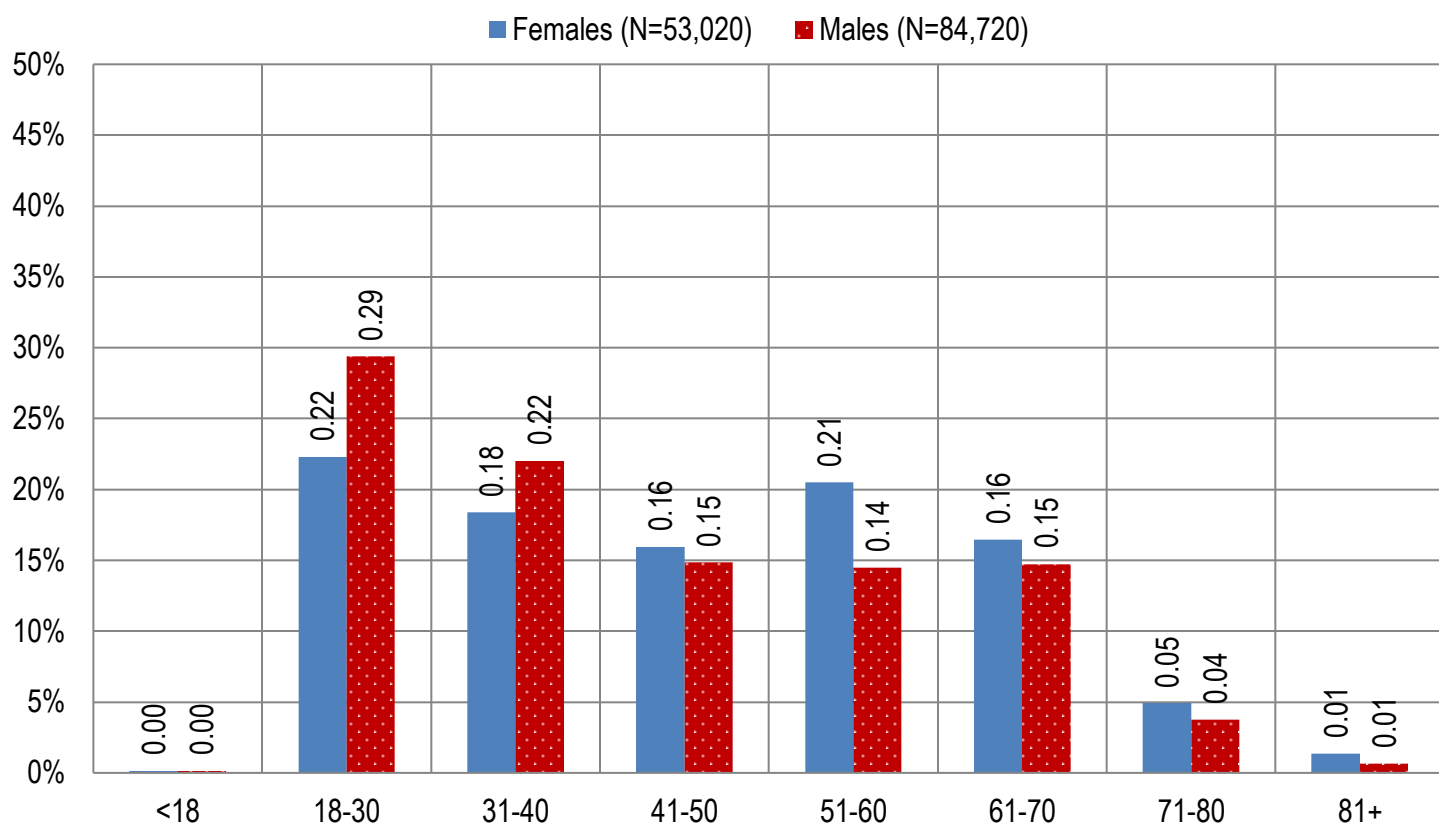


Figure 1b. Arizona Medical Marijuana Licensed Qualifying Patient Characteristics by Gender and Age (N =135,706)

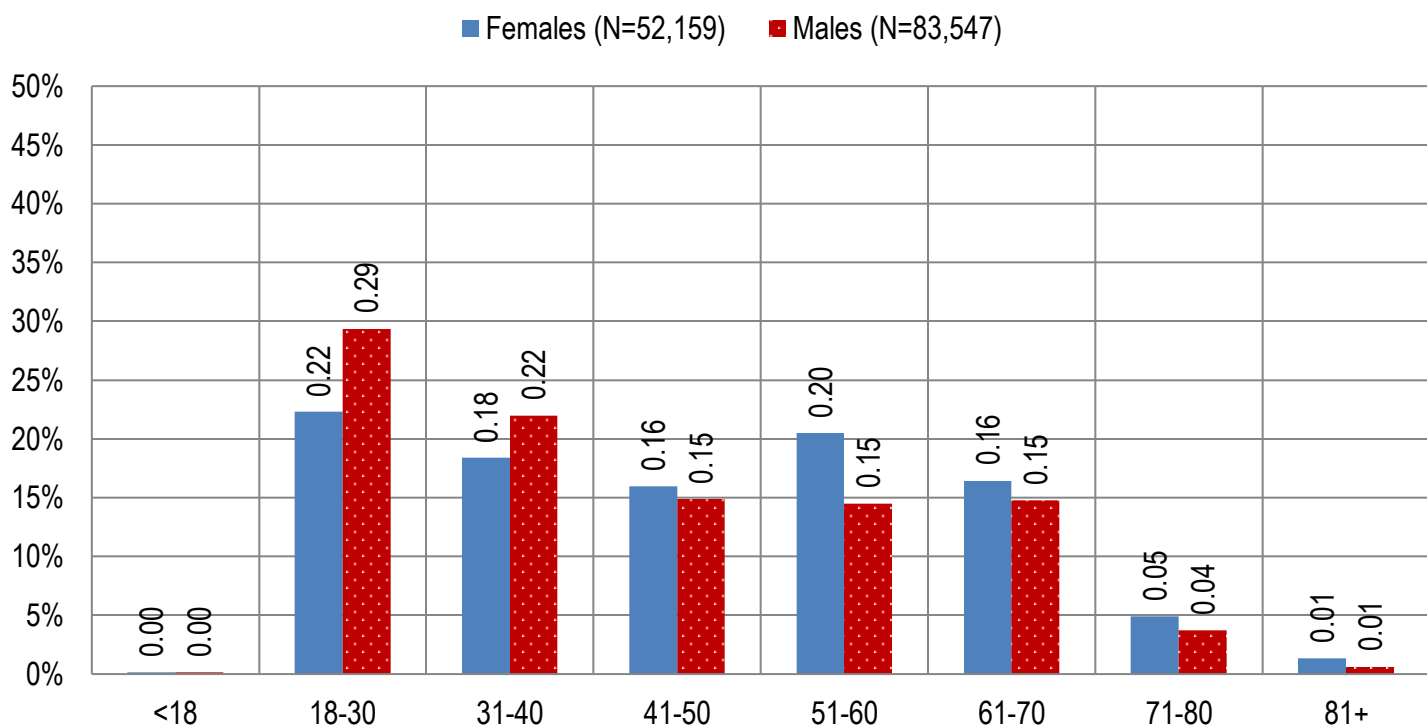


Figure 2a. Arizona Medical Marijuana Applications Received- Caregivers Characteristics by Gender and Age
(N = 1,852)

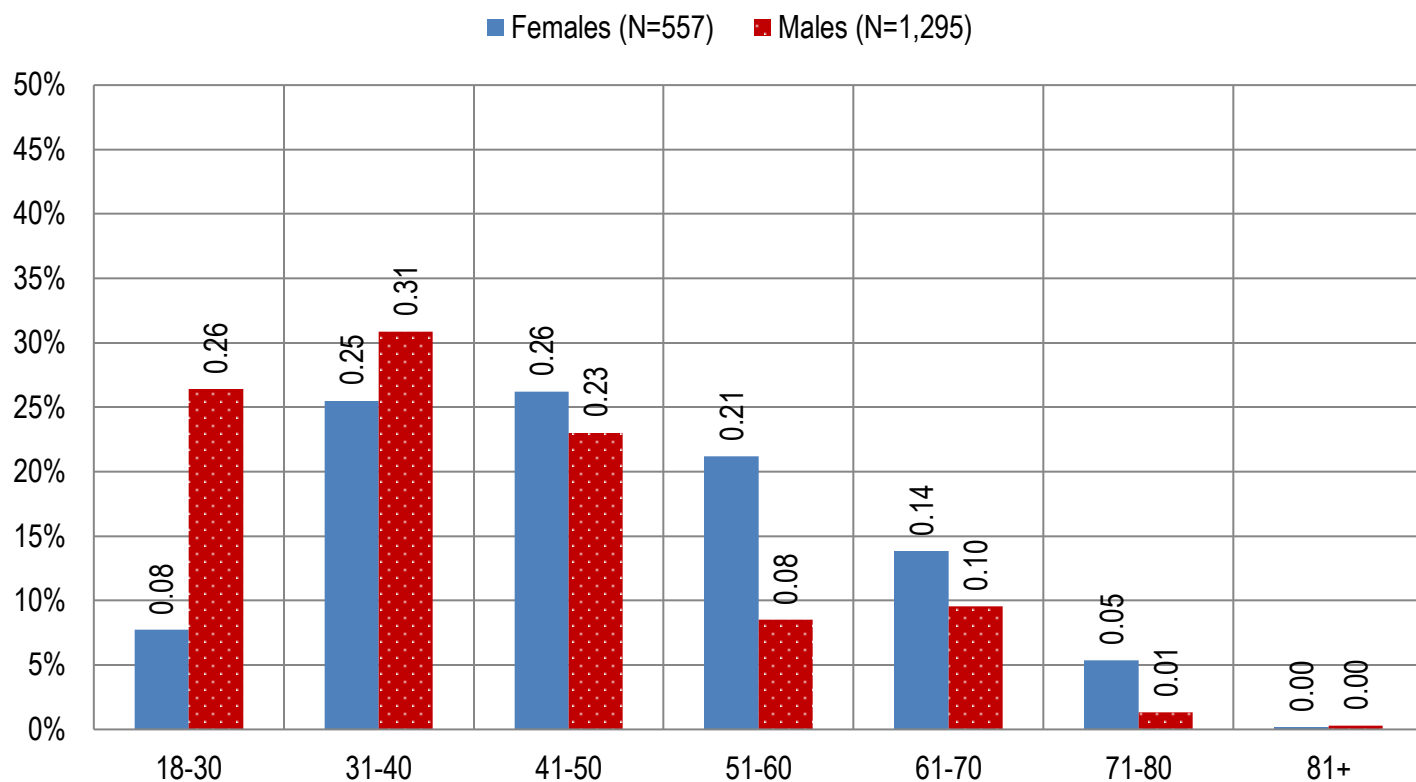


Figure 2b. Arizona Medical Marijuana Licensed Caregivers Characteristics by Gender and Age
(N = 1,771)

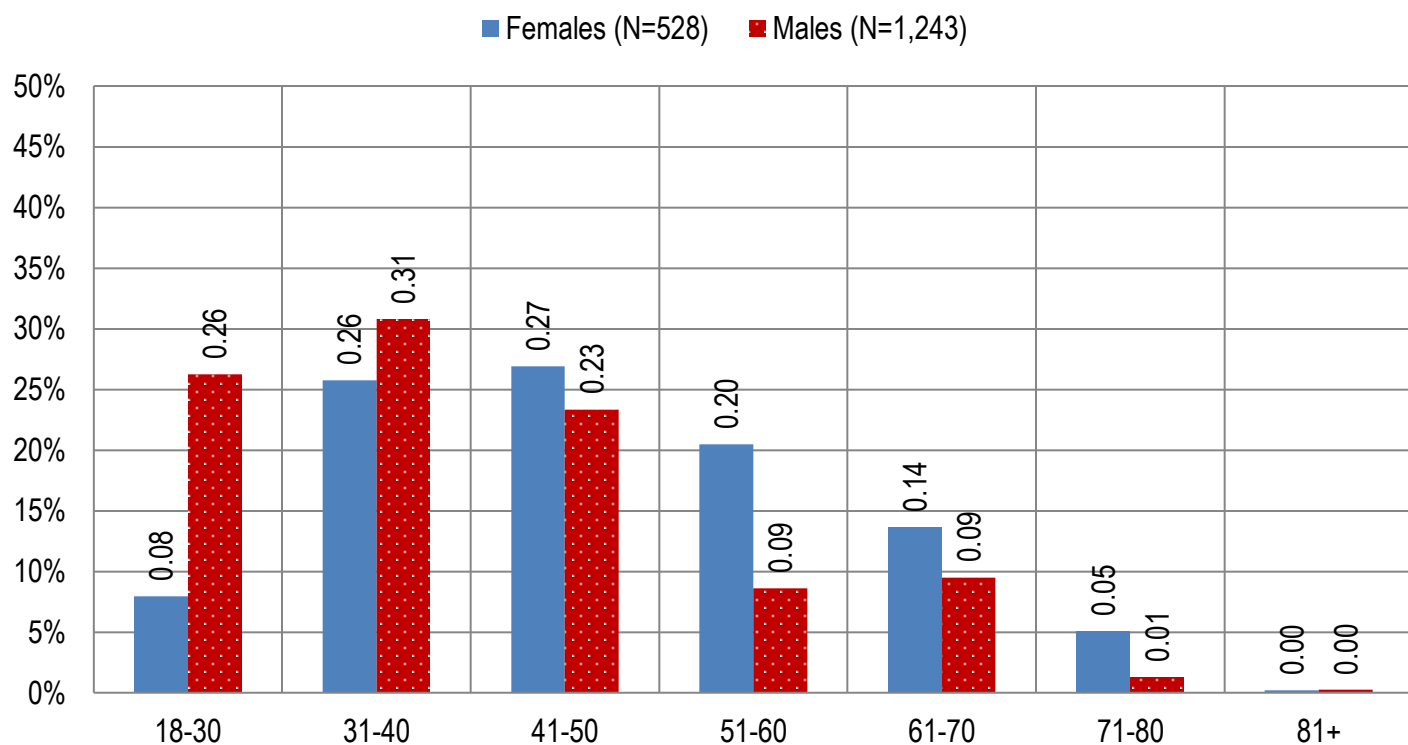


Table 4a. Arizona Medical Marijuana Applications Received- Patient Medical Conditions Profile

Patient medical condition profile of Applications Received [¶]	Totals	Percent Total
Alzheimer's	59	0.04%
Cachexia	107	0.08%
Cancer	3,294	2.39%
Chronic Pain	117,049	84.98%
Crohn's Disease	462	0.34%
Glaucoma	880	0.64%
Hepatitis C	863	0.63%
HIV/AIDS	550	0.40%
Muscle Spasms	1,100	0.80%
Nausea	736	0.53%
Post-Traumatic Stress Disorder (PTSD)	1,840	1.34%
Sclerosis	41	0.03%
Seizures	1,091	0.79%
Two Or More Conditions	9,668	7.02%
TOTAL	137,740	100.00%

[¶]Unique debilitating conditions

Table 4b. Arizona Medical Marijuana Licensed Qualifying Patients Medical Conditions Profile

Patient medical condition profile of Applications Approved [¶]	Totals	Percent Total
Alzheimer's	58	0.04%
Cachexia	105	0.08%
Cancer	3,230	2.38%
Chronic Pain	115,333	84.99%
Crohn's Disease	460	0.34%
Glaucoma	868	0.64%
Hepatitis C	858	0.63%
HIV/AIDS	546	0.40%
Muscle Spasms	1,087	0.80%
Nausea	724	0.53%
Post-Traumatic Stress Disorder (PTSD)	1,806	1.33%
Sclerosis	41	0.03%
Seizures	1,069	0.79%
Two Or More Conditions	9,521	7.02%
TOTAL	135,706	100.00%

[¶]Unique debilitating conditions

Table 5a. Arizona Medical Marijuana Applications Received for Applicants Seeking Authorization to Cultivate

Applications Received for cardholders with cultivation status	Totals	Percent total
Qualifying patients (n = 137,740)	1,710	1.24%
Caregivers (n = 1,852)	0	0.00%

Table 5b. Arizona Medical Marijuana Licensed Qualifying Patients and Designated Caregivers Authorized for Cultivation

Approved cardholders cultivation status	Totals	Percent total
Qualifying patients (n = 135,706)	1,710	1.26%
Caregivers (n = 1,607)	0	0.00%

Table 7a. Type and Amount of Transactions at Medical Marijuana Dispensaries in 2017 to Date

Type of Transaction [†]	Ounces (oz.)	Pounds
Marijuana	1,031,405.82	64,462.86
Marijuana Edible	47,728.78	2,983.05
Marijuana Other	34,930.83	2,183.18
Total Marijuana Sold	1,114,065.44	69,629.09

[†]Amounts have been rounded and may not added to exact totals

Figure 5. Transactions and Amount of Marijuana Sold in 2017 by Month

