



## Arizona Medical Marijuana Program August 2015 Monthly Report



In November 2010, Arizona voters passed the Arizona Medical Marijuana Act (AMMA), A.R.S. §36-2801 *et seq.* The AMMA went into effect on April 14, 2011, making Arizona the fourteenth state to adopt a medical marijuana law. The AMMA designates the Arizona Department of Health Services (ADHS) as the licensing and issuing authority for the Arizona Medical Marijuana Program.

The AMMA monthly report highlights the most current program statistics. This includes data on active medical marijuana cardholders as well as transaction data from the sale of medical marijuana at non-profit medical marijuana dispensaries. Tables 1 through 6 and Figures 1 through 3 reflect data that are point in time. Table 7 and Figure 4 are data from the month of August, 2015. For further information and statistics, please reference the Arizona Medical Marijuana Annual Report.

**Table 1. Arizona Medical Marijuana Active Qualifying Patients, Designated Caregivers and Dispensary Agents Profile**

Active Cardholder's Profile	Totals	Percent total
1. Qualifying patients (QPs)	80,745	96.57%
2. Caregivers (CGs)	604	0.72%
3. Qualifying patients (minors)	132	0.16%
4. Caregivers (minor patients)	131	0.16%
5. Dispensary agents (DAs)	2,003	2.40%
<b>Total</b>	<b>83,615</b>	<b>100.00%</b>

\*Note: For caregivers and dispensary agents, these data reflect unique individuals, not the number of cards.

**Table 2. Arizona Medical Marijuana Active Qualifying Patients Profile**

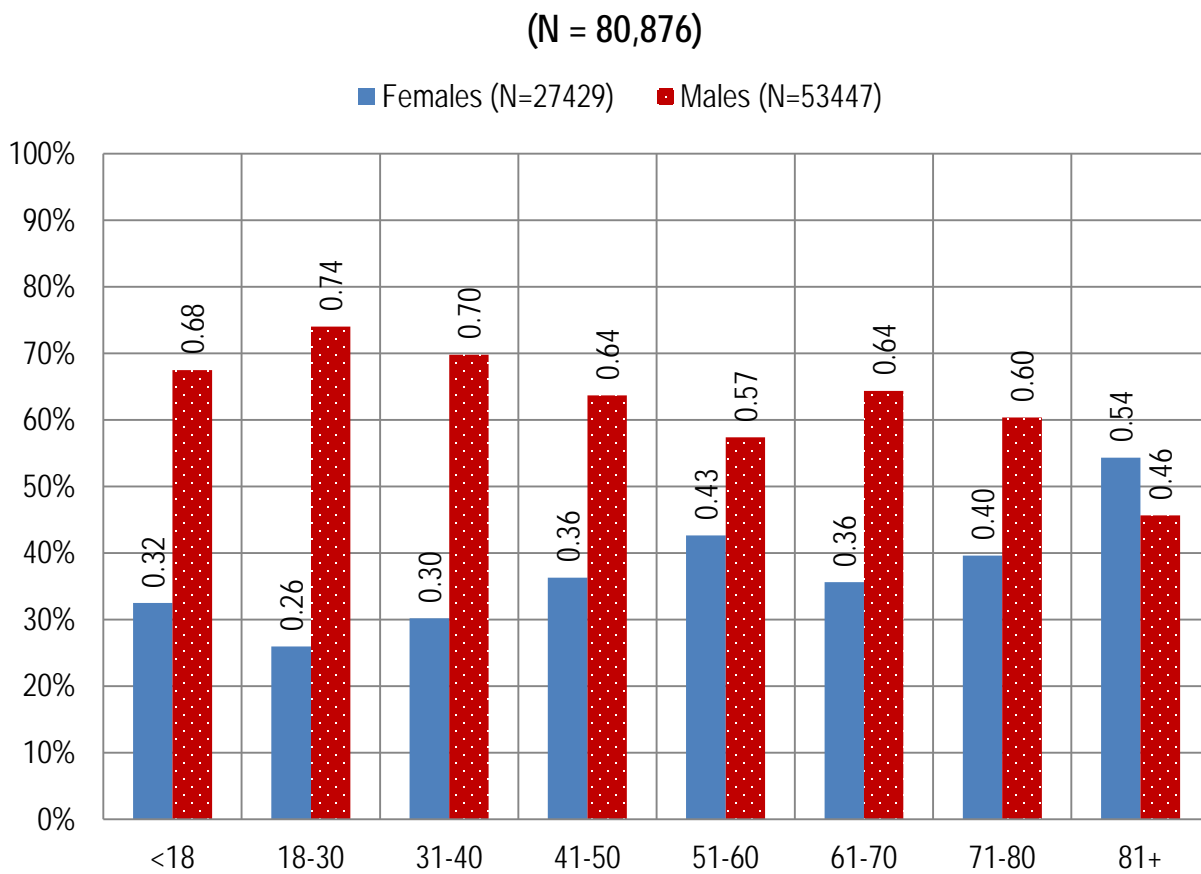
Application profile of qualifying patients	Totals	Percent total
1. New applications	57,339	70.90%
2. Renewal applications	21,290	26.32%
3. Changed demographics	850	1.05%
4. Added Caregivers	296	0.37%
5. Change Dup	1,061	1.31%
6. Replaced Caregivers	17	0.02%
7. Removed Caregivers	23	0.03%

Approximately 13 percent (n = 10,339) of the active cardholders were determined to be SNAP eligible. Of the 10,339 that were determined to be eligible, 4,562 (~44%) were females and 5,777 (~56%) were males.

**Table 3. Arizona Medical Marijuana Active Qualifying Patients Characteristics**

Characteristics of Active Cardholders who are Qualified Patients	Totals (N = 80,876)	Percent total
<b>Patient Age-groups</b>		
Less than 18 years	117	0.14%
18 to 30 years	19,709	24.37%
31 to 40 years	16,311	20.17%
41 to 50 years	12,743	15.76%
51 to 60 years	15,756	19.48%
61 to 70 years	12,837	15.87%
71 to 80 years	2,766	3.42%
81 and older	637	0.79%
<b>Patient Gender</b>		
Male	53,447	66.09%
Female	27,429	33.91%

**Figure 1. Arizona Medical Marijuana Active Qualifying Patients Characteristics by Gender and Age**

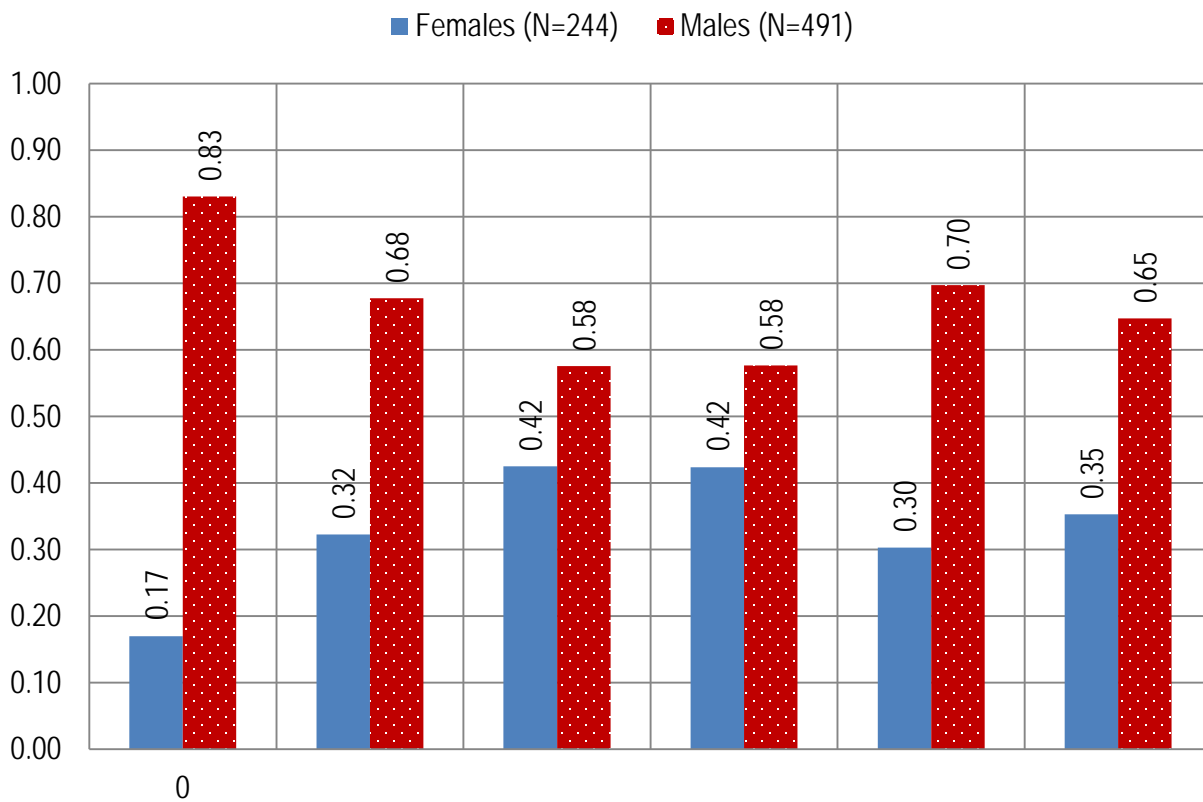


**Table 4. Arizona Medical Marijuana Active Qualifying Patients Medical Condition Profile**

Patient medical condition profile of Active Cardholders <sup>†</sup>	Totals	Percent total
ALZHEIMERS	39	0.05%
CACHEXIA	68	0.08%
CANCER	2,097	2.59%
CHRONIC PAIN	61,048	75.48%
CROHN'S DISEASE	379	0.47%
GLAUCOMA	611	0.76%
HEPATITIS; C	802	0.99%
HIV/AIDS	392	0.48%
MUSCLE SPASMS	687	0.85%
NAUSEA	584	0.72%
POST TRAUMATIC STRESS DISORVER (PTSD)	676	0.84%
SCLEROSIS	32	0.04%
SEIZURES	723	0.89%
TWO OR MORE CONDITIONS	12,738	15.75%

<sup>†</sup>Unique debilitating conditions

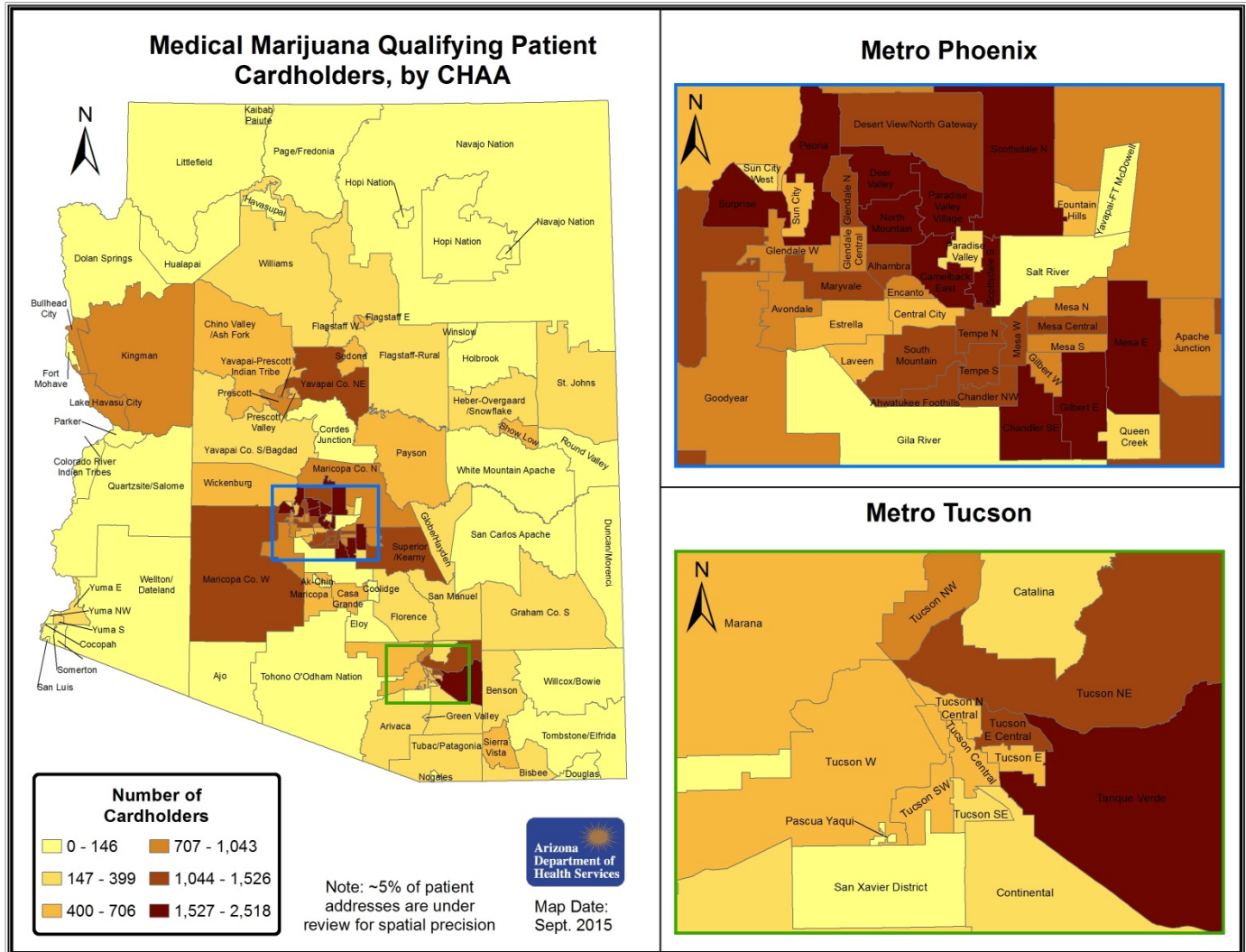
**Figure 2. Arizona Medical Marijuana Active Designated Caregiver Characteristics by Gender and Age**  
(N = 735)



**Table 5. Arizona Medical Marijuana Active Qualifying Patients and Designated Caregivers Authorized for Cultivation**

Active cardholders cultivation status	Totals	Percent total
Qualifying patients (n = 80,876)	1,436	1.78%
Caregivers (n = 735)	428	58.23%

**Figure 3. Medical Marijuana Qualifying Patient Cardholders by CHAA**



**Table 6. Frequency and Percent of Total Frequency of Qualifying Patients per CHAA**

CHAA ID	CHAA Name	Frequency Count	Percent of Total Frequency
78	Ahwatukee Foothills	1130	1.46544
101	Ajo	142	0.18415
97	Ak-Chin	3	0.00389
59	Alhambra	1259	1.63273
92	Apache Junction	844	1.09454
117	Arivaca	341	0.44223
62	Avondale	876	1.13604
119	Benson	174	0.22565
123	Bisbee	187	0.24251
6	Bullhead City	872	1.13085
56	Camelback East	2008	2.60407
99	Casa Grande	564	0.73142
104	Catalina	150	0.19453
67	Central City	571	0.74050
79	Chandler NW	1218	1.57956
80	Chandler SE	1990	2.58073
25	Chino Valley/Ash Fork	570	0.73920
89	Cocopah	3	0.00389
37	Colorado River Indian Tribes	7	0.00908
114	Continental	378	0.49021
98	Coolidge	117	0.15173
31	Cordes Junction	138	0.17897
44	Deer Valley	2192	2.84269
42	Desert View/North Gateway	1174	1.52250
3	Dolan Springs	114	0.14784
124	Douglas	44	0.05706
83	Duncan/Morenci	93	0.12061
100	Eloy	121	0.15692
63	Encanto	885	1.14771
66	Estrella	567	0.73531
16	Flagstaff E	453	0.58747
15	Flagstaff W	572	0.74180
14	Flagstaff-Rural	399	0.51744
95	Florence	180	0.23343
7	Fort Mohave	115	0.14914
50	Fountain Hills	435	0.56413
75	Gila River	10	0.01297
77	Gilbert E	1837	2.38231
76	Gilbert W	767	0.99468
54	Glendale Central	903	1.17105
45	Glendale N	1193	1.54714
53	Glendale W	791	1.02581
33	Globe/Hayden	223	0.28920
61	Goodyear	860	1.11529

84	Graham Co. S	242	0.31384
118	Green Valley	166	0.21528
13	Havasupai	0	0.00000
20	Heber-Overgaard/Snowflake	250	0.32421
19	Holbrook	85	0.11023
11	Hopi Nation	1	0.00130
4	Hualapai	0	0.00000
2	Kaibab Paiute	0	0.00000
5	Kingman	823	1.06731
8	Lake Havasu City	1043	1.35261
72	Laveen	552	0.71586
1	Littlefield	14	0.01816
102	Marana	687	0.89094
96	Maricopa	641	0.83128
38	Maricopa Co. N	840	1.08935
51	Maricopa Co. W	1155	1.49786
60	Maryvale	1306	1.69368
70	Mesa Central	1101	1.42783
65	Mesa E	1744	2.26170
64	Mesa N	830	1.07638
73	Mesa S	918	1.19051
69	Mesa W	1411	1.82985
10	Navajo Nation	15	0.01945
126	Nogales	77	0.09986
52	North Mountain	2213	2.86993
9	Page/Fredonia	146	0.18934
55	Paradise Valley	164	0.21268
46	Paradise Valley Village	2518	3.26546
35	Parker	64	0.08300
116	Pascua Yaqui	8	0.01037
32	Payson	610	0.79108
41	Peoria	1856	2.40695
28	Prescott	962	1.24757
29	Prescott Valley	693	0.89872
36	Quartzsite/Salome	78	0.10115
81	Queen Creek	305	0.39554
24	Round Valley	54	0.07003
57	Salt River	71	0.09208
34	San Carlos Apache	0	0.00000
91	San Luis	8	0.01037
94	San Manuel	222	0.28790
115	San Xavier District	0	0.00000
40	Scottsdale N	2008	2.60407
58	Scottsdale S	1765	2.28894
17	Sedona	618	0.80145
21	Show Low	416	0.53949
122	Sierra Vista	510	0.66139
90	Somerton	44	0.05706
71	South Mountain	1205	1.56270

23	St. Johns	166	0.21528
49	Sun City	577	0.74828
48	Sun City West	192	0.24899
93	Superior/Kearny	1191	1.54455
47	Surprise	1671	2.16703
106	Tanque Verde	1635	2.12035
68	Tempe N	1526	1.97899
74	Tempe S	1383	1.79354
82	Tohono O'Odham Nation	28	0.03631
121	Tombstone/Elfrida	95	0.12320
125	Tubac/Patagonia	178	0.23084
111	Tucson Central	706	0.91558
112	Tucson E	606	0.78589
109	Tucson E Central	1273	1.65089
108	Tucson N Central	661	0.85722
105	Tucson NE	1524	1.97640
103	Tucson NW	746	0.96745
113	Tucson SE	329	0.42666
110	Tucson SW	578	0.74958
107	Tucson W	670	0.86889
85	Wellton/Dateland	74	0.09597
22	White Mountain Apache	6	0.00778
39	Wickenburg	658	0.85333
120	Willcox/Bowie	100	0.12968
12	Williams	228	0.29568
18	Winslow	120	0.15562
26	Yavapai Co. NE	1225	1.58864
27	Yavapai Co. S/Bagdad	237	0.30735
43	Yavapai-FT McDowell	17	0.02205
30	Yavapai-Prescott Indian Tribe	2	0.00259
86	Yuma E	307	0.39813
87	Yuma NW	133	0.17248
88	Yuma S	359	0.46557

\*Note: ~5% of patient addresses are under review for spatial precision

**Table 7. Type and Amount of Transactions at Medical Marijuana Dispensaries in August, 2015**

Type of Transaction <sup>†</sup>	Ounces (oz.)	Pounds
Marijuana	51,103.24	3,193.95
Marijuana Edible	3,619.63	226.23
Marijuana Other	936.26	58.52
<b>Total Marijuana Sold</b>	<b>55,659.12</b>	<b>3,478.70</b>

<sup>†</sup>Amounts have been rounded and may not added to exact totals

**Figure 4. Daily Transactions and Amount of Marijuana Sold in August, 2015**

