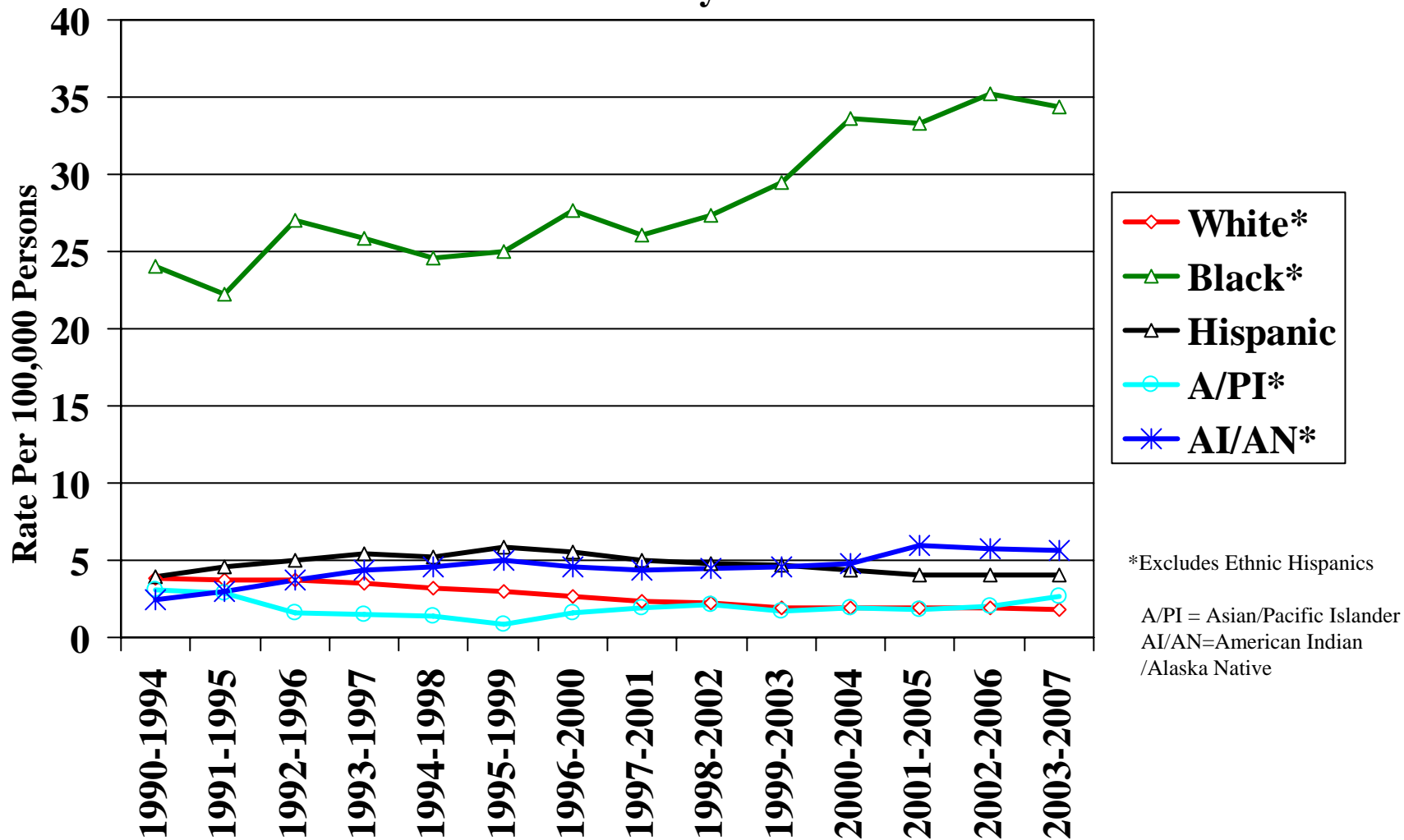


Arizona 5-Year Emergent HIV/AIDS Rate Among Women by Race/Ethnicity: 1990-2007



*Excludes Ethnic Hispanics

A/PI = Asian/Pacific Islander
 AI/AN=American Indian
 /Alaska Native

**ARIZONA PREVALENT HIV/AIDS, EMERGENT HIV/AIDS,
AND STATE POPULATION AMONG WOMEN BY RACE/ETHNICITY**

Race/Ethnicity	Current Female HIV/AIDS Prevalence			Emergent Female HIV/AIDS 2003-2007			2007 Female Population Estimates	
	Cases	% State Total	Rate Per 100,000	Cases	% State Total	Rate Per 100,000	Population	% State Total
White Non-Hispanic	799	6.0	41.60	167	4.4	1.81	1,920,631	60.7
Black Non-Hispanic	427	3.2	373.83	174	4.6	34.34	114,223	3.6
Hispanic	435	3.5	52.11	167	4.4	4.09	903,859	28.6
A/PI/H ¹ Non-Hispanic	28	0.2	32.01	10	0.3	2.61	87,485	2.8
AI/AN ² Non-Hispanic	74	0.6	53.08	38	1.0	5.64	139,413	4.4
MR ³ /Non-Hispanic Other	33	0.2	N/A	5	0.1	N/A	N/A	N/A
TOTAL	1832	13.6	57.87	561	14.7	3.77	3,165,611	100.0

¹A/PI/H=Asian/Pacific Islander/Native Hawaiian

²AI/AN=American Indian/Alaska Native

³MR=Multi-Racial

Population estimates 2007 Bridged-Race Intercensal US Estimates from US Census Bureau.

**ARIZONA PREVALENT HIV/AIDS AMONG WOMEN BY
RACE/ETHNICITY AND REPORTED MODE OF EXPOSURE FOR
ARIZONA'S THREE LARGEST RACE/ETHNIC GROUPS**

Race/Ethnicity	Prevalent Cases	IDU¹	HRH²	NIR³ / Other	Blood or Transplant	Vertical Pediatric
White non-Hispanic	799	286(36%)	368(46%)	123(15%)	8(1%)	14(2%)
Black non-Hispanic	427	94(22%)	226(53%)	87(20%)	1(<1%)	19(4%)
Hispanic	471	106(23%)	285(61%)	66(14%)	2(<1%)	12 (3%)

Source: Arizona HARS 2/26/09; NCHS 1990-2006 Bridged-Race Intercensal Estimates.

1. Injection drug use
2. High Risk Heterosexual
3. 'NIR' is no indicated risk

ARIZONA PREVALENT HIV/AIDS AMONG WOMEN IN URBAN AND RURAL COUNTIES BY RACE/ETHNICITY

Race/Ethnicity	Female HIV/AIDS Prevalence: Maricopa County			Female HIV/AIDS Prevalence: Pima County			Female HIV/AIDS Prevalence: All Rural Counties		
	Cases	% County Total	Rate Per 100,000	Cases	% County Total	Rate Per 100,000	Cases	% Rural County Total	Rate Per 100,000
White non-Hispanic	500	40.7%	42.18	141	45.9%	48.53	158	53.0%	35.52
Black non-Hispanic	327	26.7%	386.25	68	22.1%	423.81	32	10.7%	236.74
Hispanic	319	26.0%	57.12	75	24.4%	46.94	77	25.8%	41.48
A/PI/H ¹ non-Hispanic	18	1.5%	28.37	5	1.6%	36.78	5	1.7%	47.83
AI/AN ² non-Hispanic	44	3.6%	128.51	9	2.9%	66.67	21	7.0%	22.91
MR/ ³ Other non-Hispanic	19	1.5%	N/A	9	2.9%	N/A	5	1.7%	N/A
TOTAL	1227	100%	63.70	307	100.0%	62.21	298	100%	39.94
(% State Female Cases)	(67%)			(17%)			(16%)		

Source: Arizona HARS 2/26/09; NCHS 1990-2006 Bridged-Race Intercensal Estimates.

1. Asian / Pacific Islander / Native Hawaiian
2. American Indian / Alaska Native
3. Multiple Race / Other

ARIZONA EMERGENT HIV/AIDS AMONG WOMEN IN URBAN AND RURAL COUNTIES BY RACE/ETHNICITY

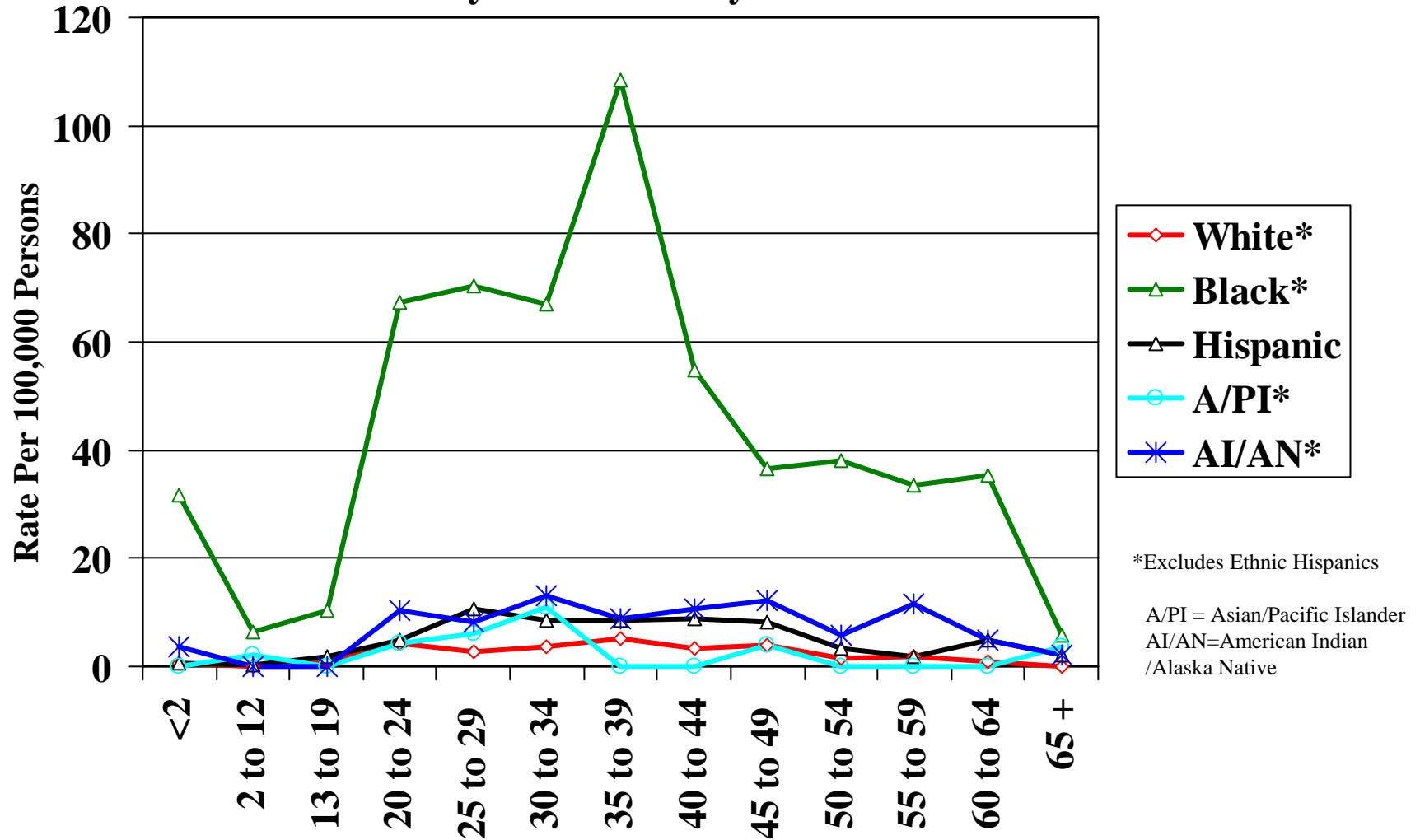
Female HIV/AIDS 2003-2007 Emergence: Maricopa County Female HIV/AIDS 2003-2007 Emergence: Pima County Female HIV/AIDS 2003-2007 Emergence: All Rural Counties

Race/Ethnicity	Female HIV/AIDS 2003-2007 Emergence: Maricopa County			Female HIV/AIDS 2003-2007 Emergence: Pima County			Female HIV/AIDS 2003-2007 Emergence: All Rural Counties		
	Cases	% County Total	Rate Per 100,000	Cases	% County Total	Rate Per 100,000	Cases	% Rural County Total	Rate Per 100,000
White non-Hispanic	102	26.2%	1.78	30	35.3%	2.29	35	40.7%	1.69
Black non-Hispanic	134	34.4%	35.59	27	31.8%	32.68	13	15.1%	23.41
Hispanic	120	30.8%	4.82	22	25.9%	3.16	25	29.1%	2.97
A/PI/H ¹ non-Hispanic	7	1.8%	2.52	2	2.4%	3.36	1	1.2%	2.34
AI/AN ² non-Hispanic	23	5.9%	14.36	3	3.5%	7.77	12	14.0%	2.68
MR/ ³ Other non-	4	1.0%	N/A	1	1.2%	N/A	0	0.0%	N/A
TOTAL	390	100%	4.31	85	100%	3.66	86	100%	2.48
(% State Female)	(70%)			(15%)			(15%)		

Source: Arizona HARS 2/26/09; NCHS 1990-2006 Bridged-Race Intercensal Estimates.

1. Asian / Pacific Islander / Native Hawaiian
2. American Indian / Alaska Native
3. Multiple Race / Other

Arizona HIV/AIDS Rate By Age at Emergent Infection Among Women by Race/Ethnicity: 2003-2007



*Excludes Ethnic Hispanics

A/PI = Asian/Pacific Islander
AI/AN=American Indian
/Alaska Native

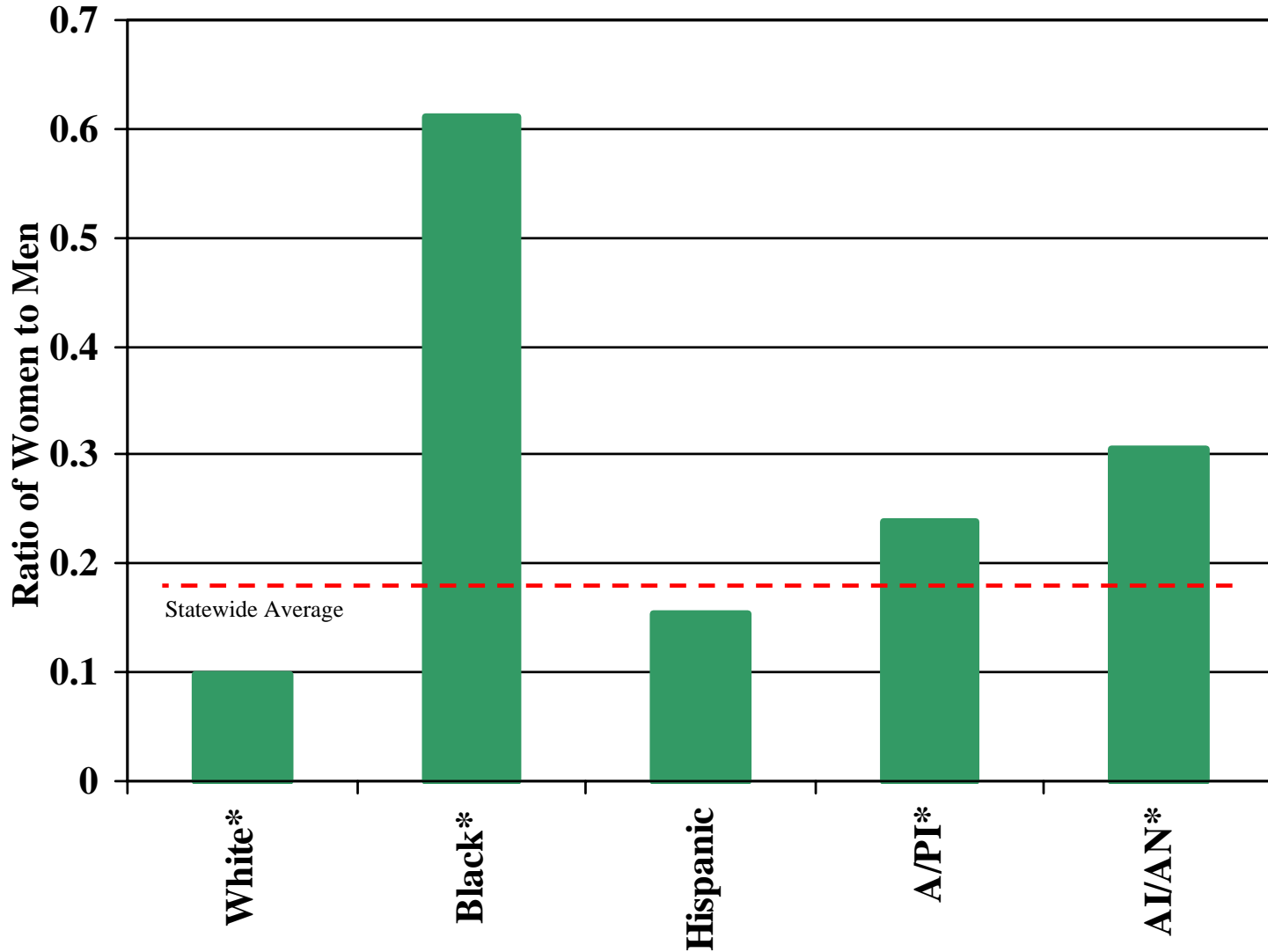
ARIZONA DEATHS BY RACE/ETHNICITY AMONG PERSONS REPORTED WITH HIV/AIDS: 2003-2007

Race/Ethnicity	Males		Females	
	Deaths	Death Rate Per 100,000 Per Year	Deaths	Death Rate Per 100,000 Per Year
White non-Hispanic	578	6.44	68	0.74
Black non-Hispanic	98	17.85	30	5.92
Hispanic	235	5.34	32	0.78
A/PI/H ¹ non-Hispanic	5	1.44	0	0.00
AI/AN ² non-Hispanic	38	6.01	14	2.08
MR/ ³ Other non-Hispanic	35	N/A	5	N/A
TOTAL	989	6.64	149	1.00
Total not Black non-Hispanic	891	6.21	119	0.83

Source: Arizona HARS 2/26/09; NCHS 1990-2006 Bridged-Race Intercensal Estimates.

1. Asian / Pacific Islander / Native Hawaiian
2. American Indian / Alaska Native
3. Multiple Race / Other

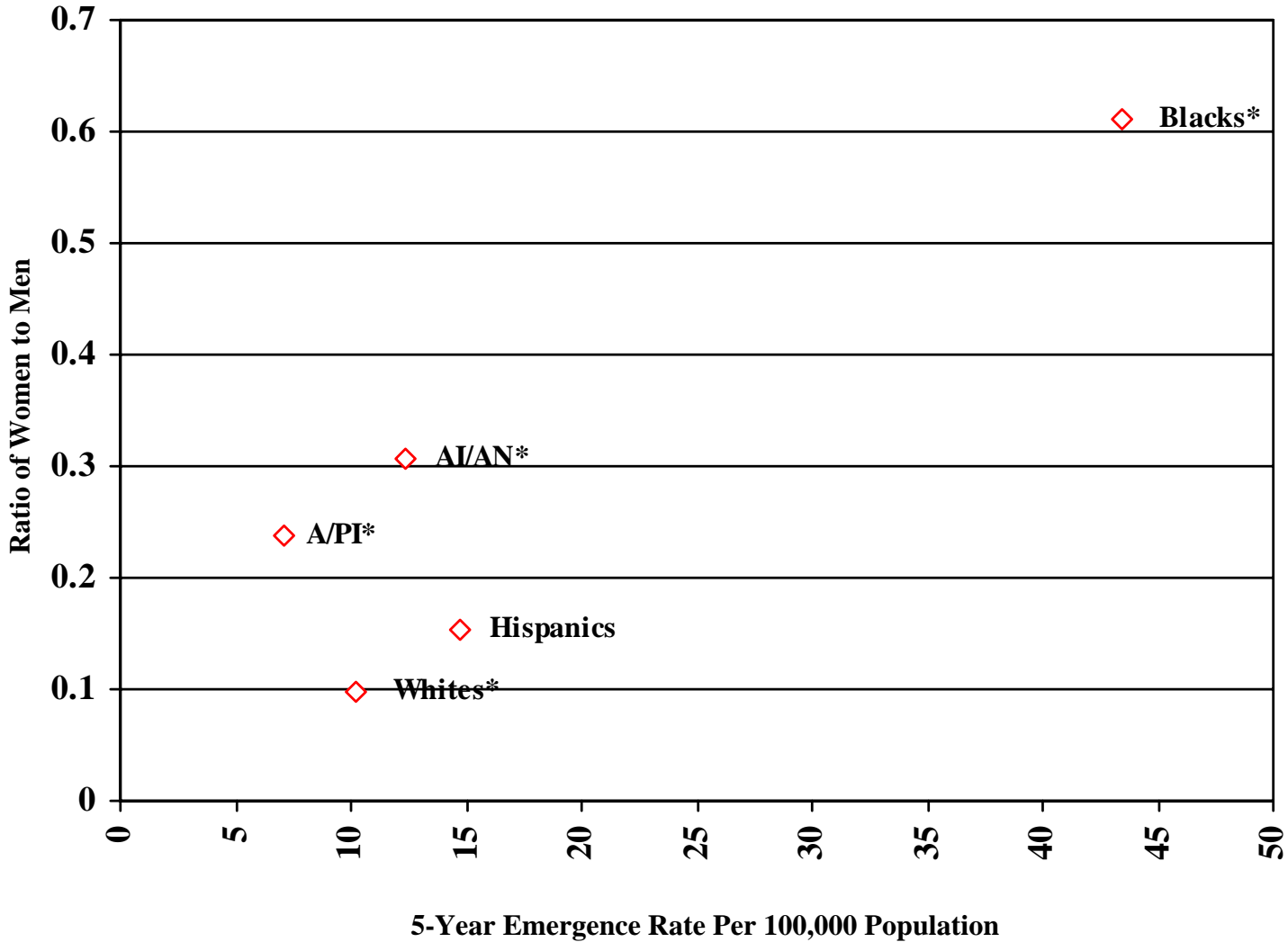
Ratio of Sexes Among 5-Year Emergent Arizona HIV/AIDS Reports by Race/Ethnicity: 2003-2007



*Excludes Ethnic Hispanics

A/PI = Asian/Pacific Islander
AI/AN=American Indian
/Alaska Native

Scatter Plot: 5-Year Emergence Rate by Proportion of Women to Men by Race/Ethnicity: 2003-2007



*Excludes Ethnic Hispanics

A/PI = Asian/Pacific Islander
AI/AN=American Indian
/Alaska Native

Scatter Plot: Emergence Rate by Proportion of Women to Men - Arizona vs. South Africa

