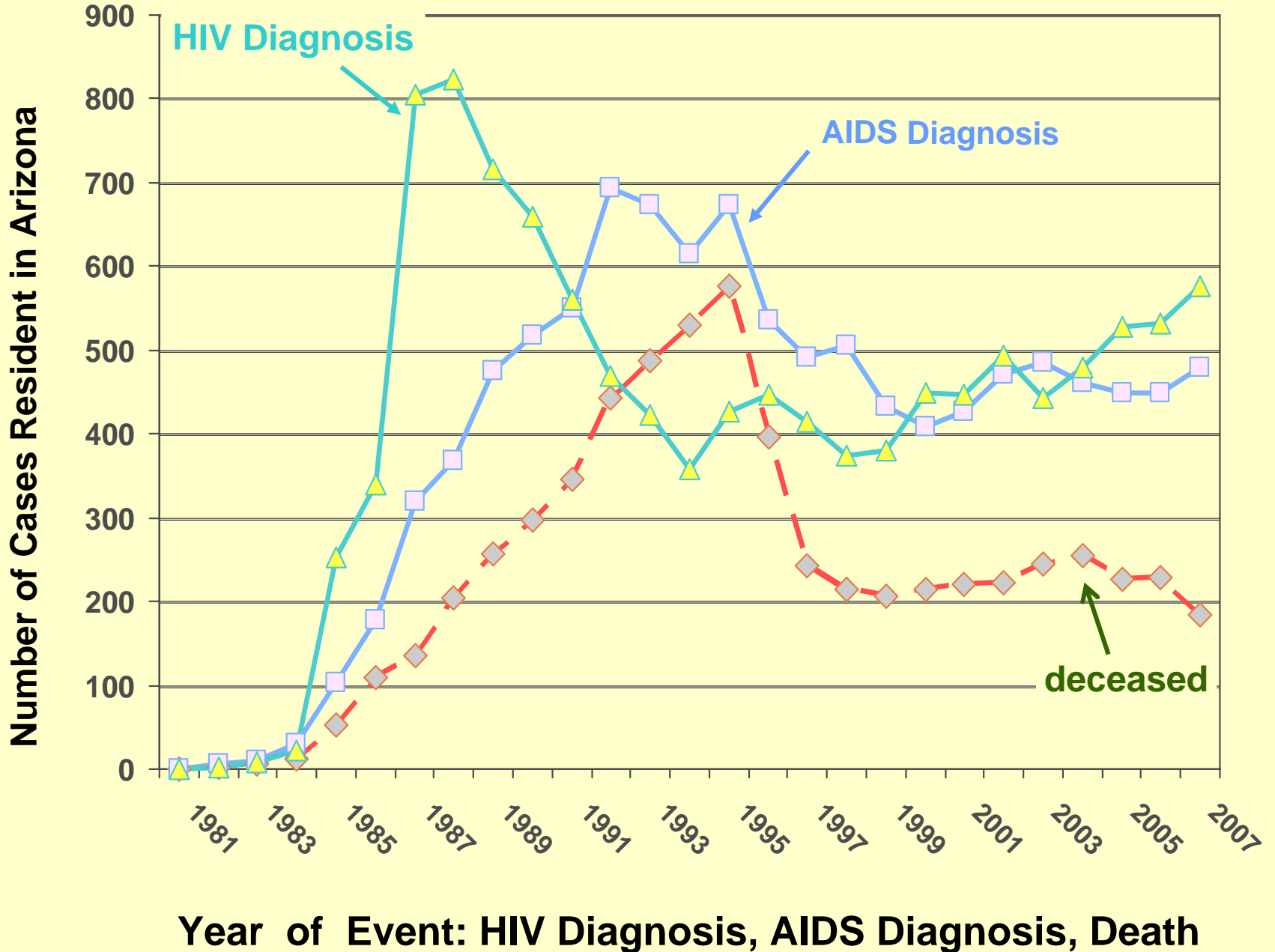
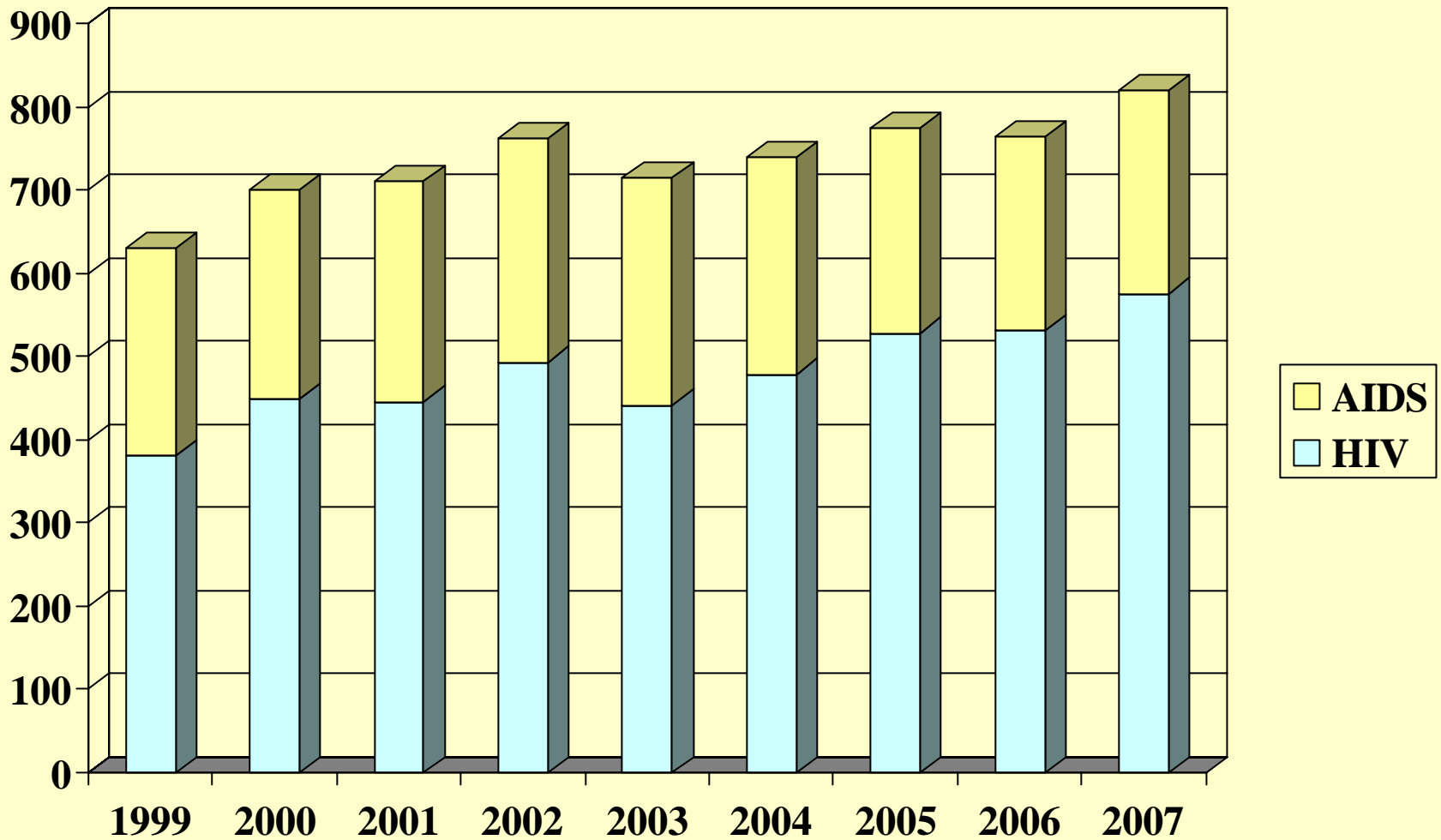


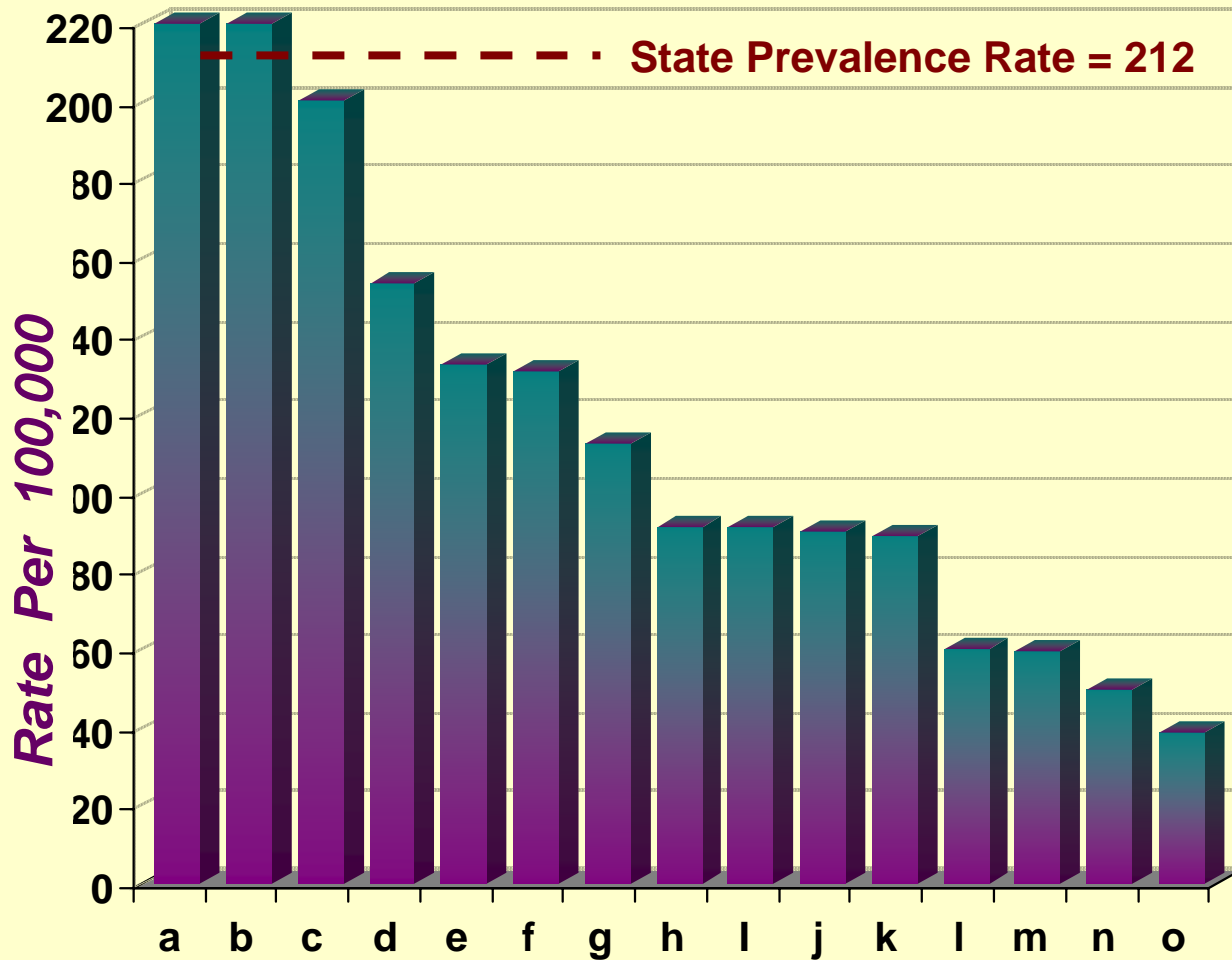
# HIV/AIDS Events Per Year in Arizona, 1981-2007



# Emergent HIV/AIDS Diagnoses in Arizona 1999-2007



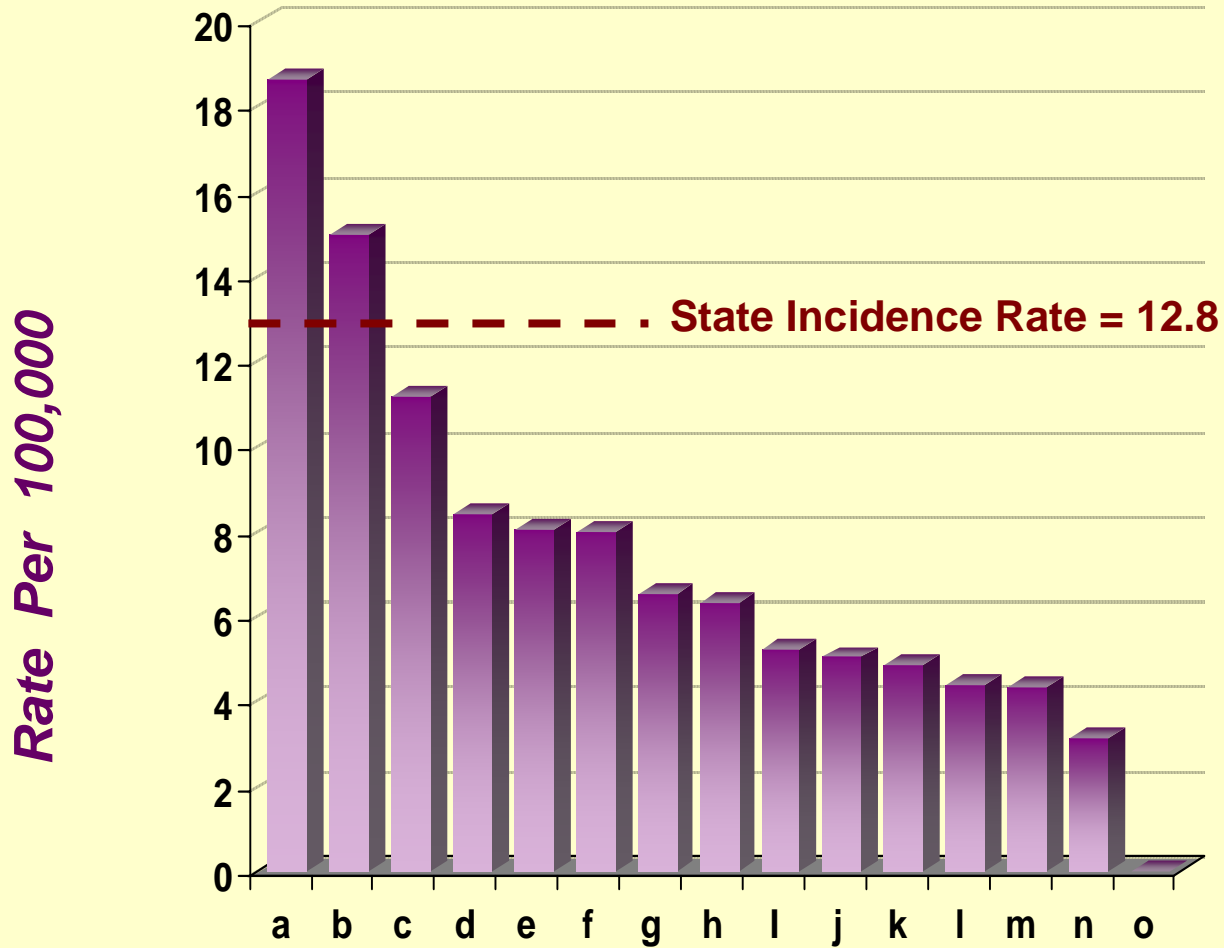
# Prevalence: Current Estimated HIV/AIDS Rate, by County



- a- Maricopa
- b- Pima
- c- Pinal\*
- d- La Paz
- e- Cochise
- f- Coconino
- g- Mohave
- h- Yuma
- i- Santa Cruz
- j- Yavapai
- k- Graham\*
- l- Apache
- m- Gila
- n- Navajo
- o- Greenlee

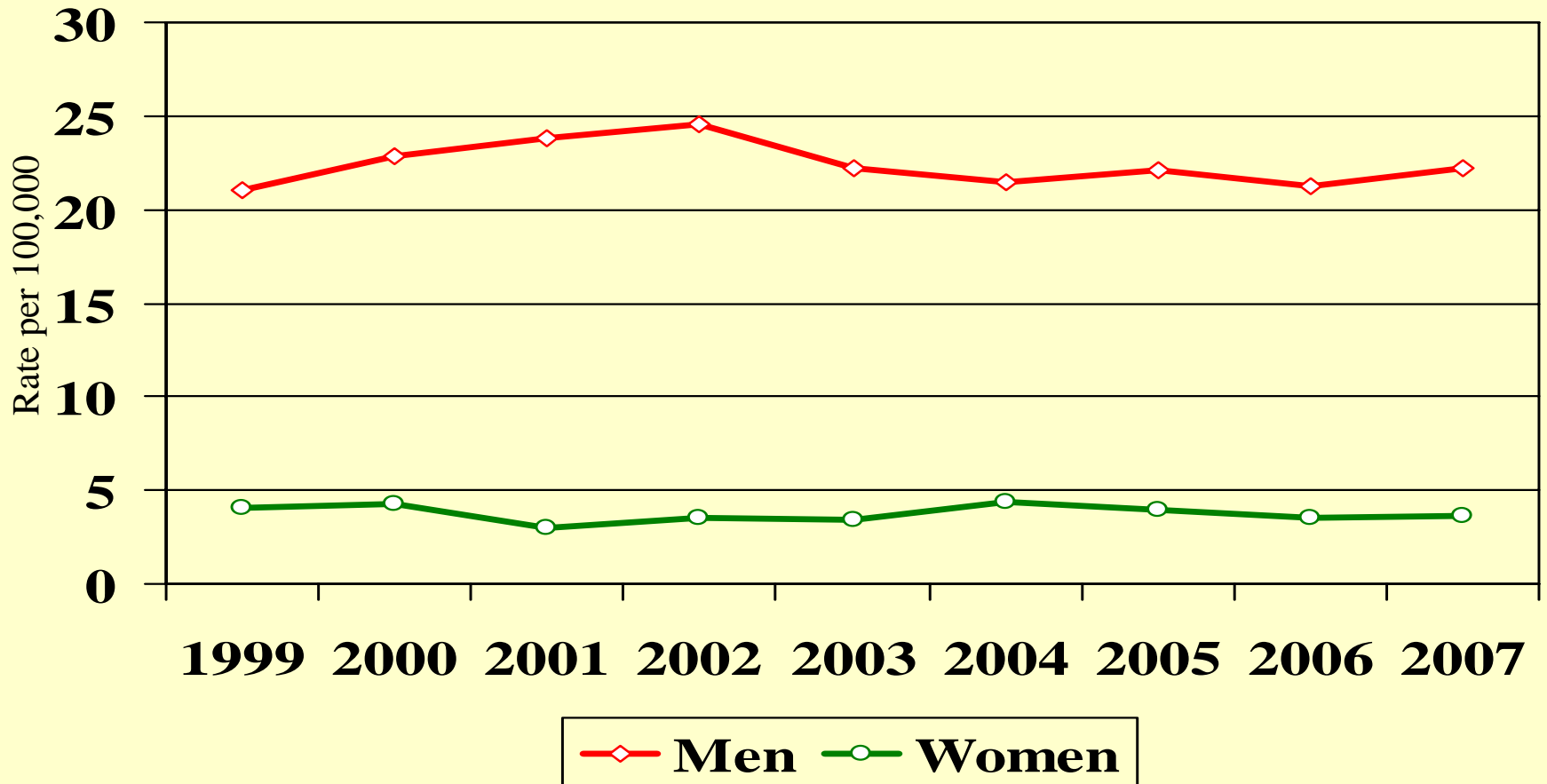
\* 30-50% of prevalent cases in Pinal and Graham counties are among incarcerated persons.

# Incidence: Mean Annual Emergent HIV/AIDS Rate, 2003-2007, by County

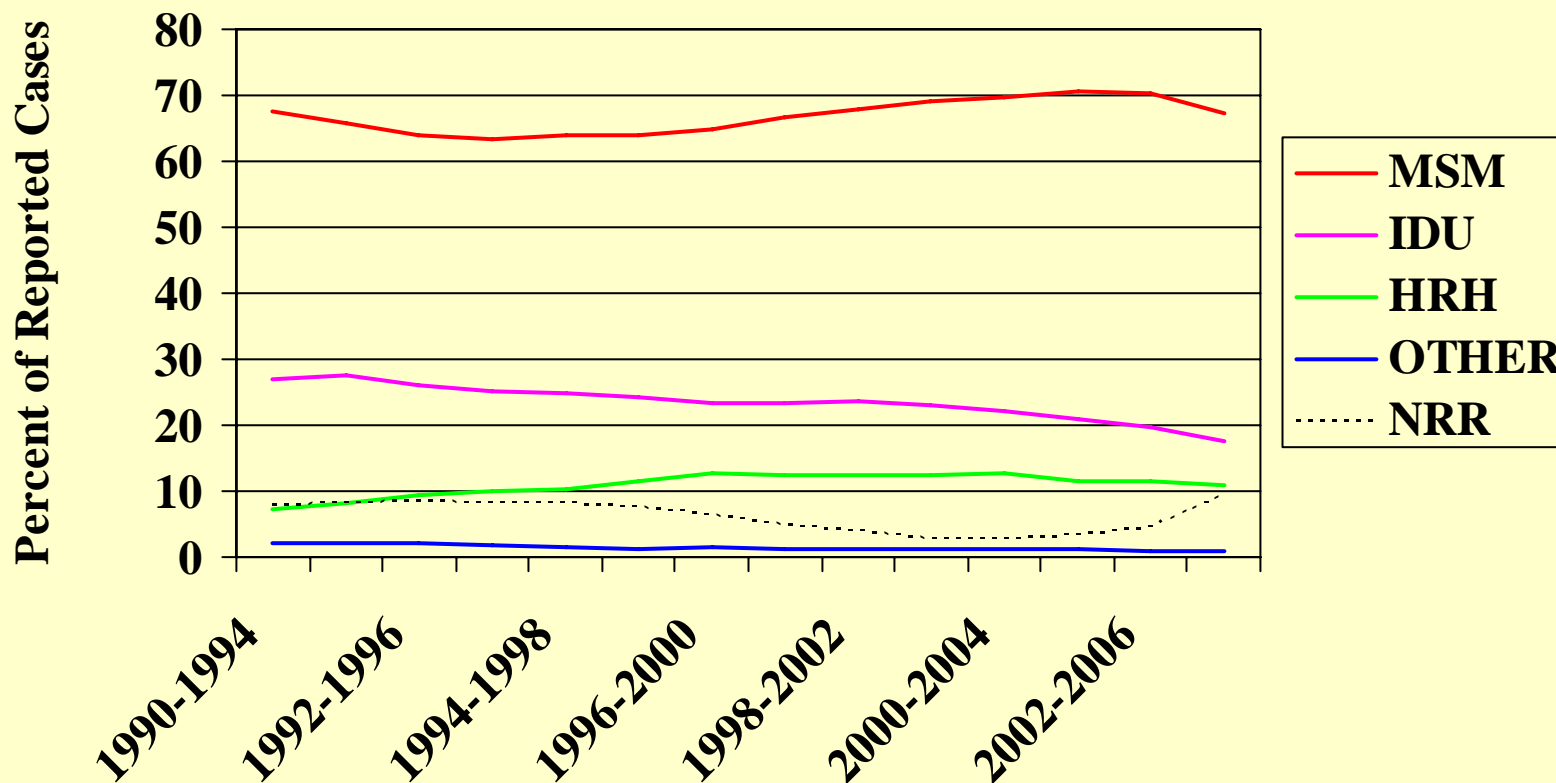


- a- Pinal\*
  - b- Maricopa
  - c- Pima
  - d- Graham\*
  - e- Coconino
  - f- Cochise
  - g- Navajo
  - h- Yuma
  - i- Apache
  - j- LaPaz
  - k- Mohave
  - l- Santa Cruz
  - m- Yavapai
  - n- Gila
  - o- Greenlee
- An estimated 60% of emergent cases in Pinal and Graham counties were among incarcerated persons.

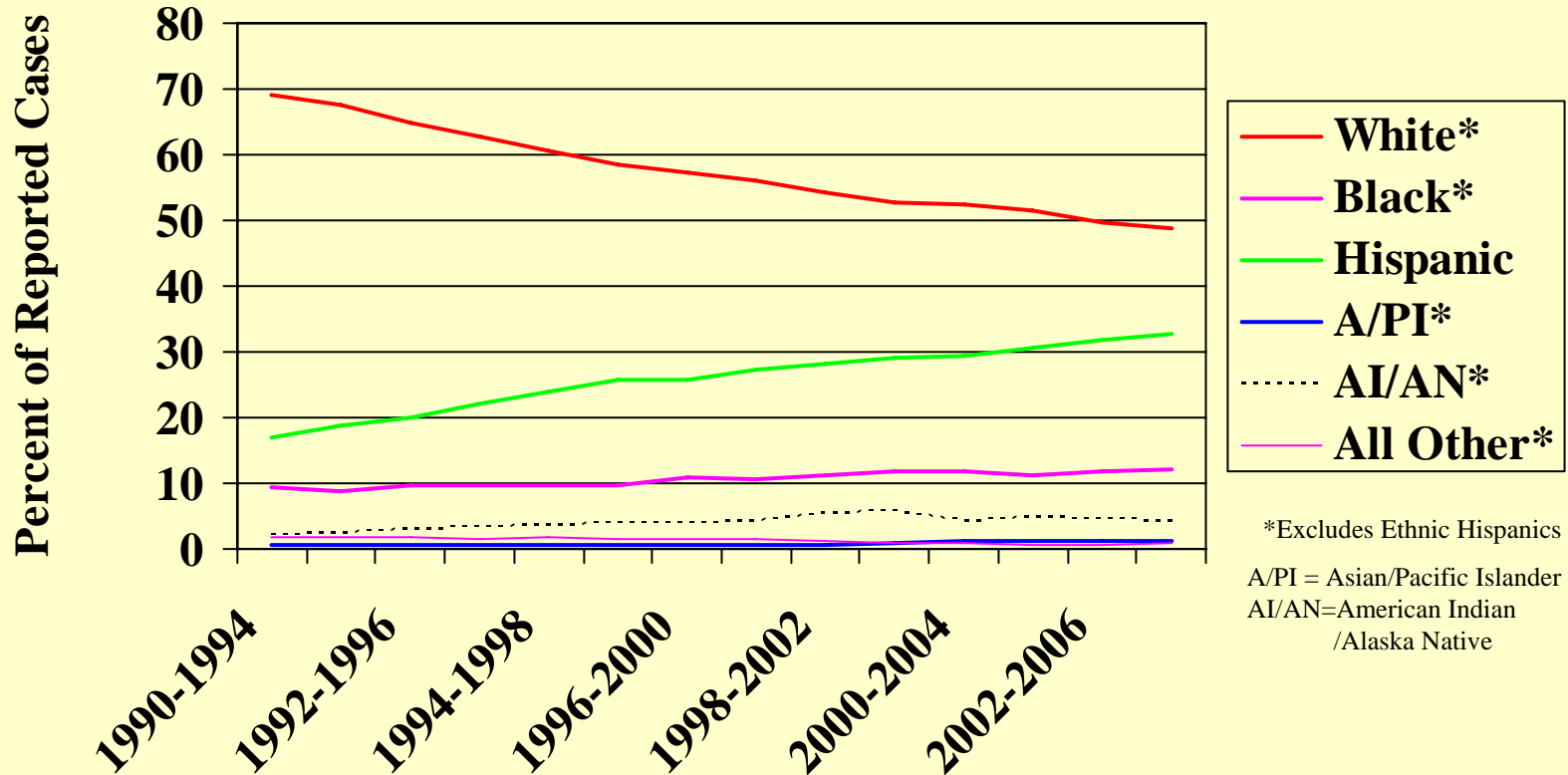
# Arizona Emergent HIV/AIDS rate by Gender: 1999-2007



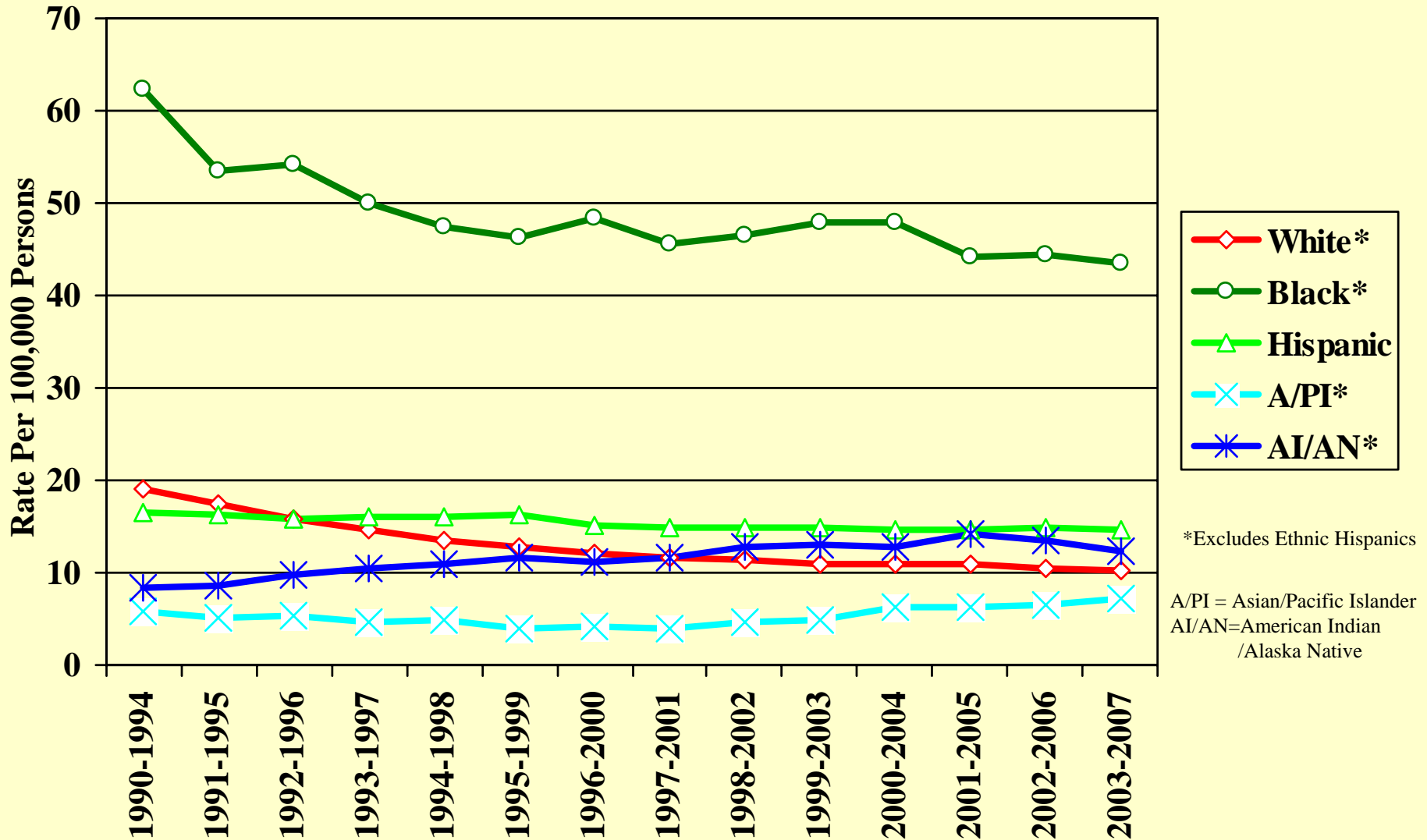
# Relative Percentage of Emergent Cases by Reported Risk Behavior in Arizona: 1990-2007



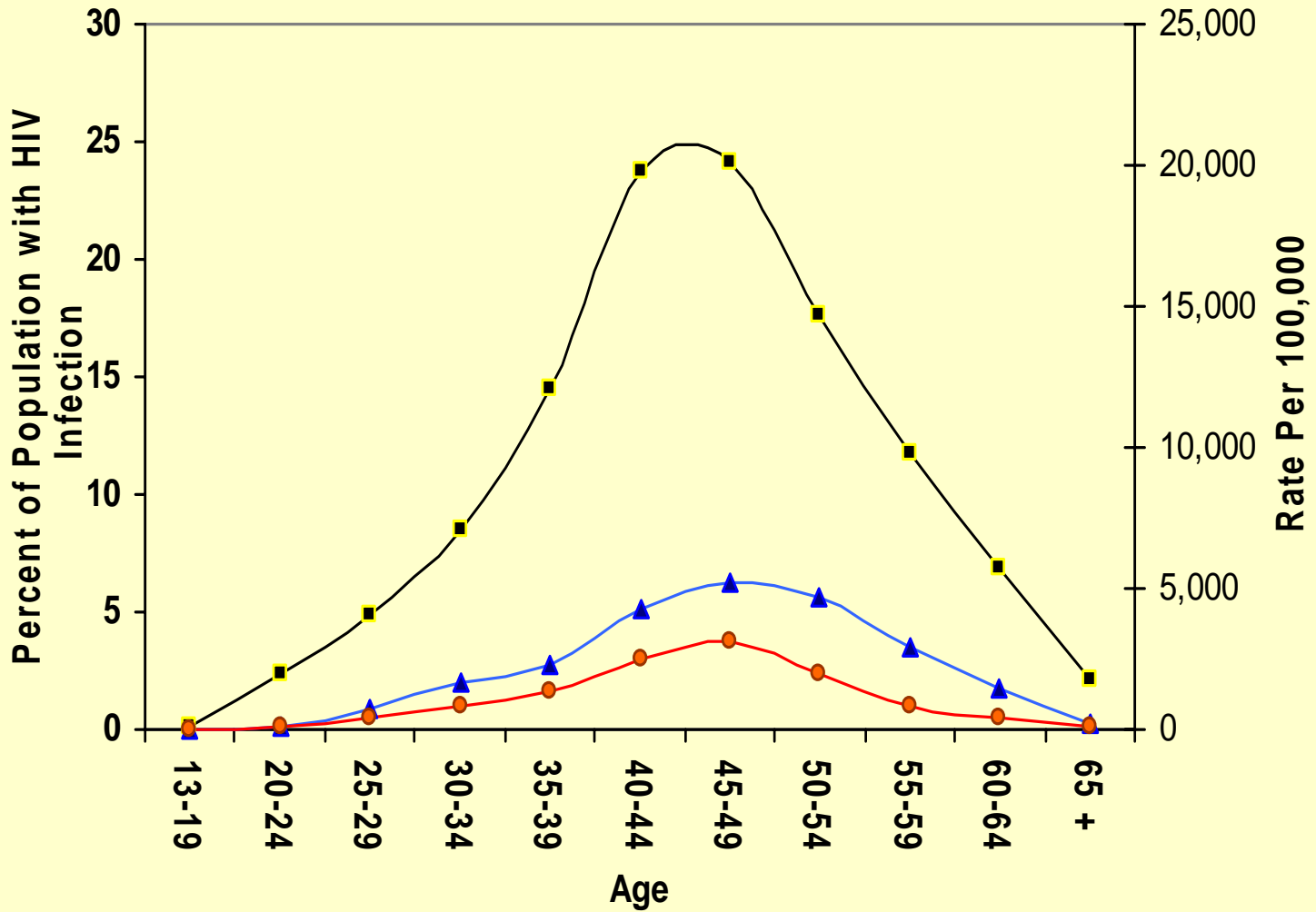
# Relative Percentage of Emergent Cases by Race in Arizona: 1990-2007



## Arizona 5-Year Emergent HIV/AIDS Rate by Race/Ethnicity: 1990-2007

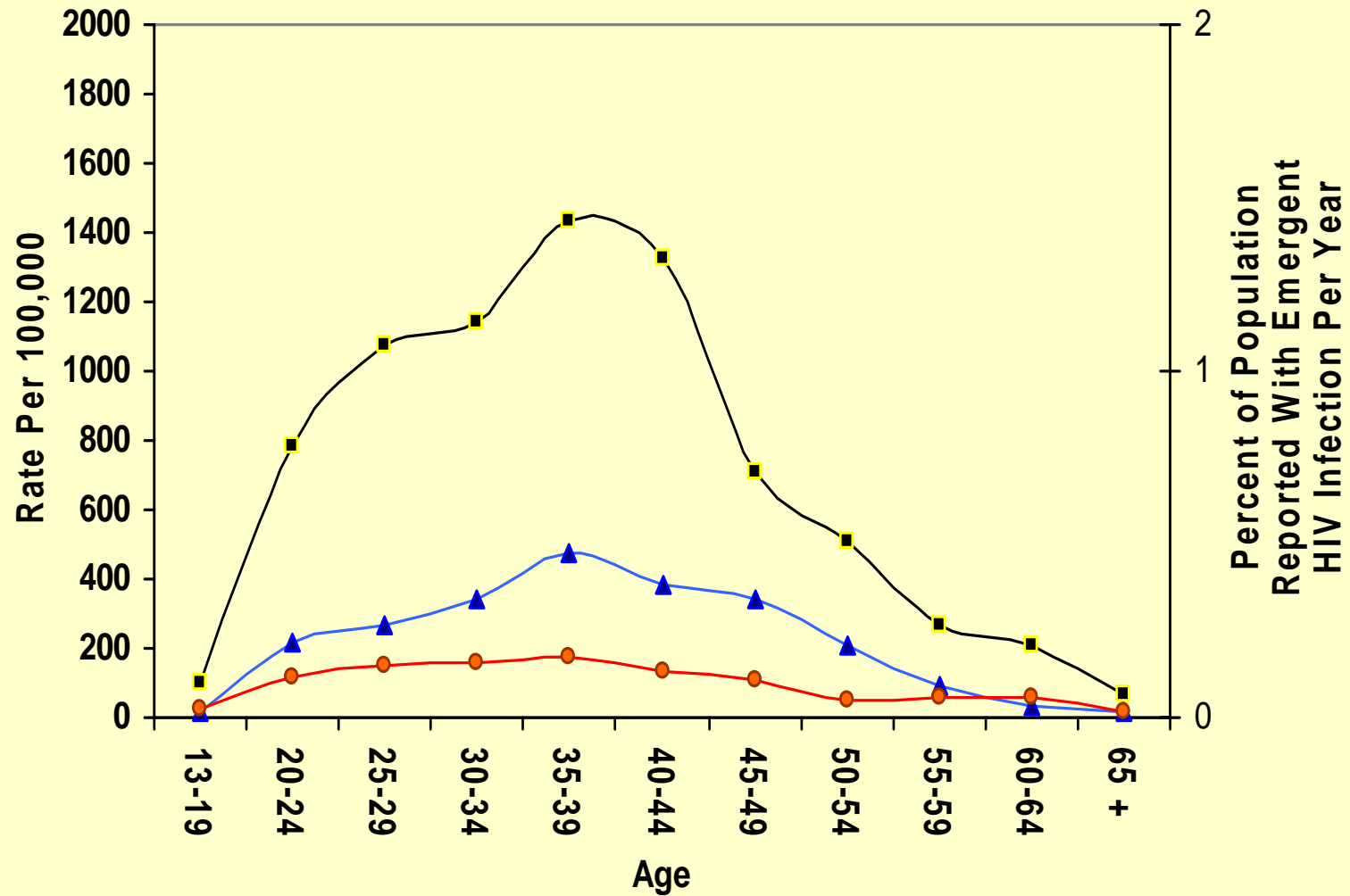


# Arizona Percent/Rate Currently Infected with HIV Among Estimated Risk Group Population



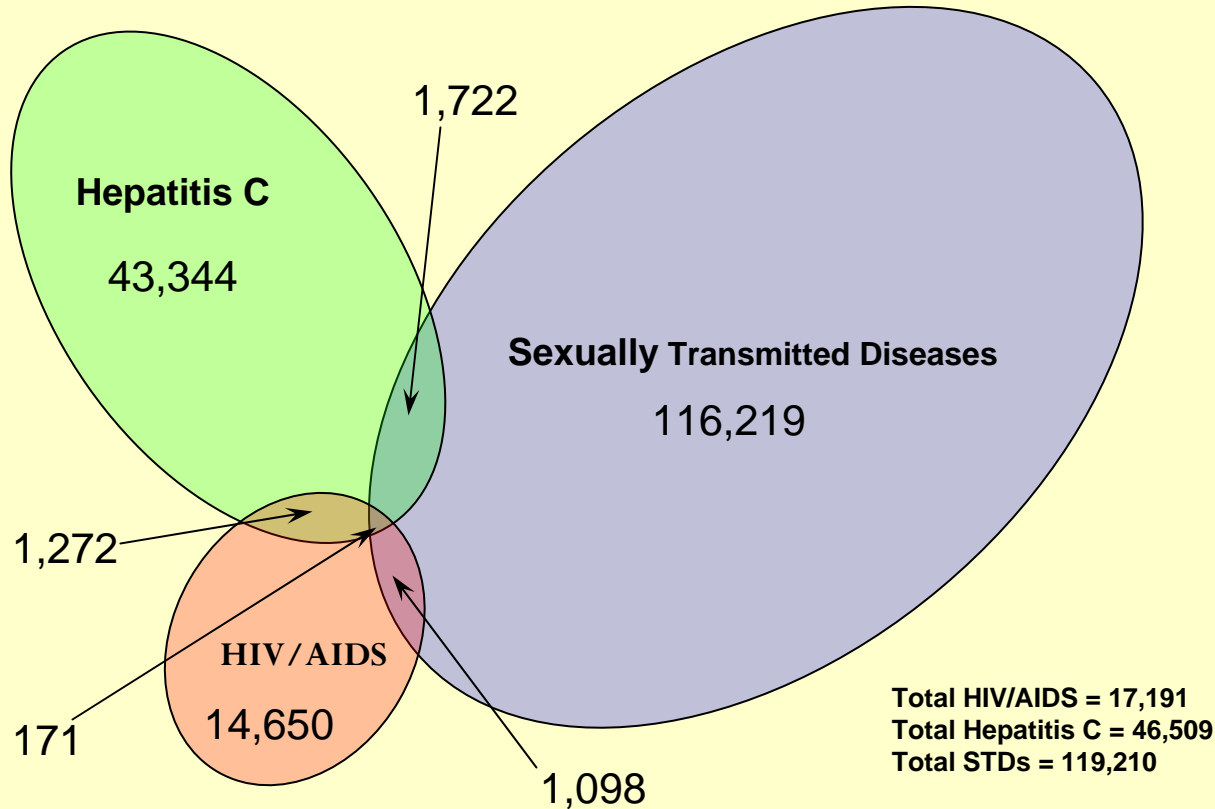
■ Men Who Have Sex with Men 
 ▲ Injection Drug Users 
 ● High Risk Heterosexuals

# Arizona Annual Percent/Rate Emergent HIV Infection Among Estimated Risk Group Populations: 2003-2007



■ Men Who Have Sex with Men 
 ▲ Injection Drug Users 
 ● High Risk Heterosexuals

**Lifetime Co-morbidity Pattern Among Persons Diagnosed with HIV/AIDS, Hepatitis C, or a Sexually Transmitted Disease: Arizona 1998 - 2003**



**Reported HIV Infection Among Persons Reported with HepC:**  
**(1,443/46,509)= 3.1%**

**Reported HIV Infection Among Persons Reported with any STD:**  
**(1,269/119,210)=1.1%**

A total of 178,476 persons reported in Arizona with any diagnosis of HIV/AIDS, Hepatitis C, or a sexually transmitted disease (STD) during the 1998-2003 time frame are included in this analysis. A lifetime diagnostic history of HIV, AIDS, Hepatitis C or an STD was constructed for persons in this analysis using all available data. The Venn diagram presents the lifetime co-morbidity configuration for this group of persons. Current reported HIV infection in Arizona is nearly 0.2%. Using this figure, the likelihood of HIV infection with a diagnosis of Hepatitis C are 15.5 times (3.1%/0.2%) greater, and a with a diagnosis of an STD are 5.5 times (1.1%/0.2%) greater than in the general population of Arizona.