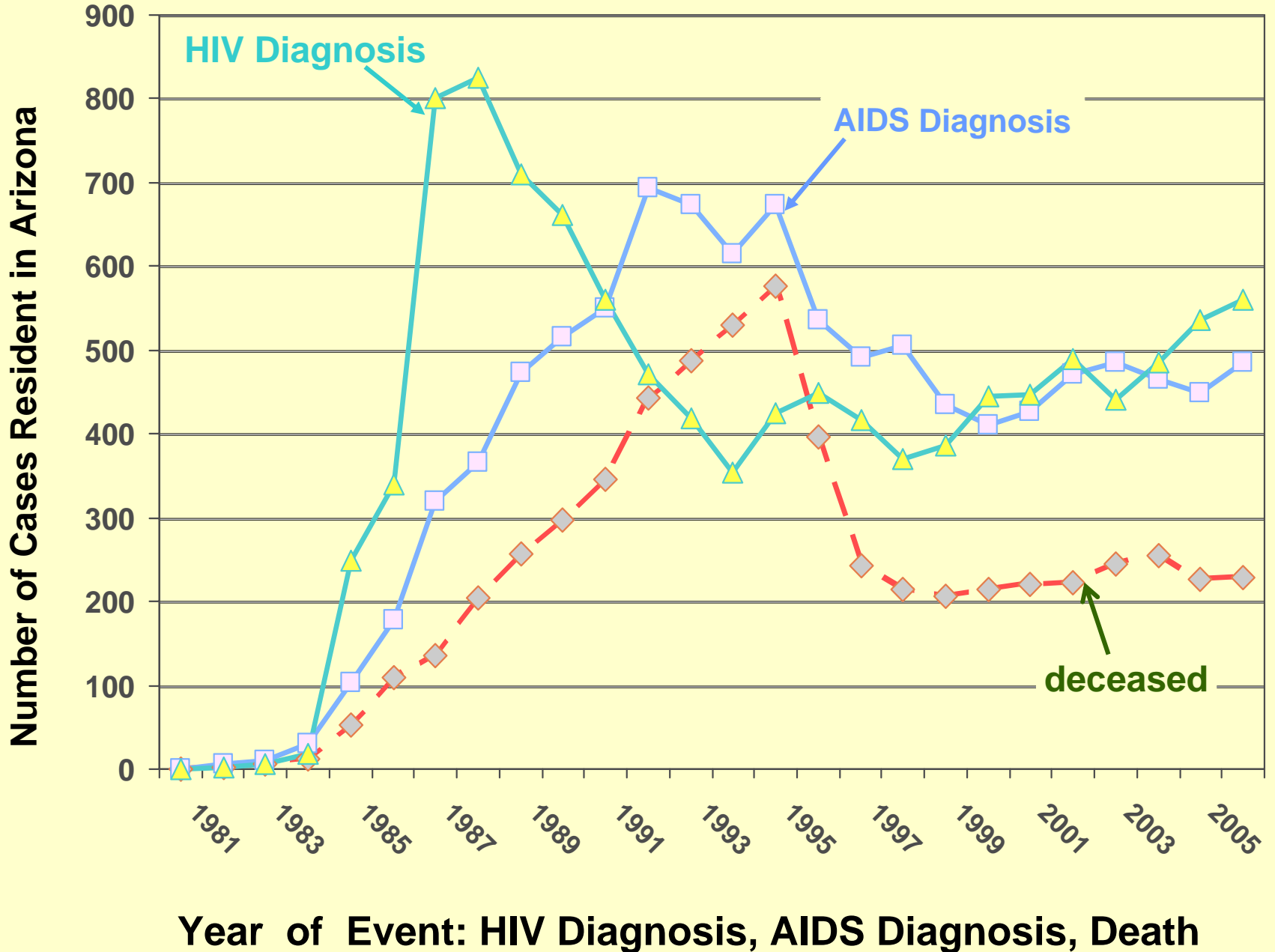
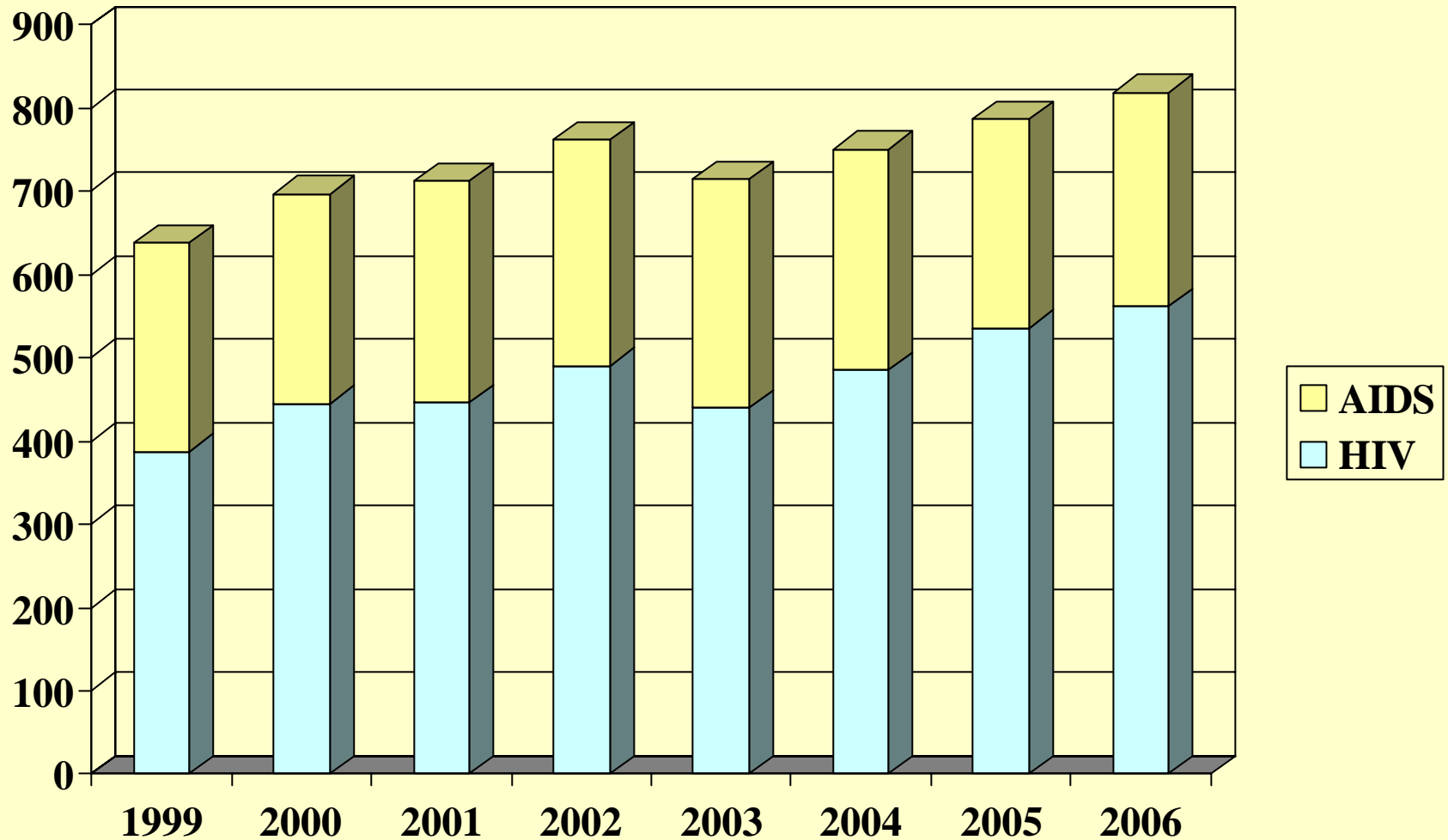


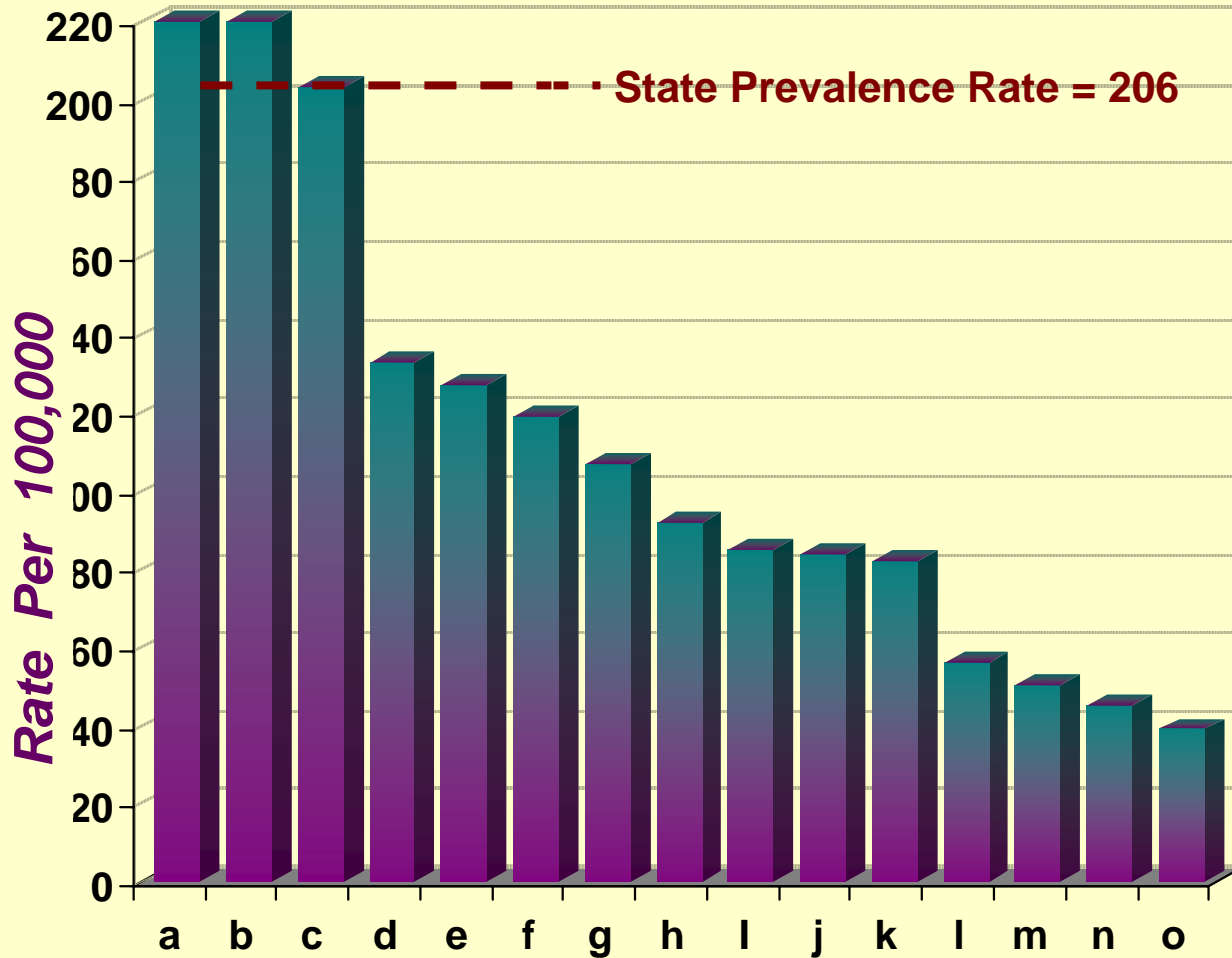
HIV/AIDS Events Per Year in Arizona, 1981-2006



Emergent HIV/AIDS Diagnoses in Arizona 1999-2006



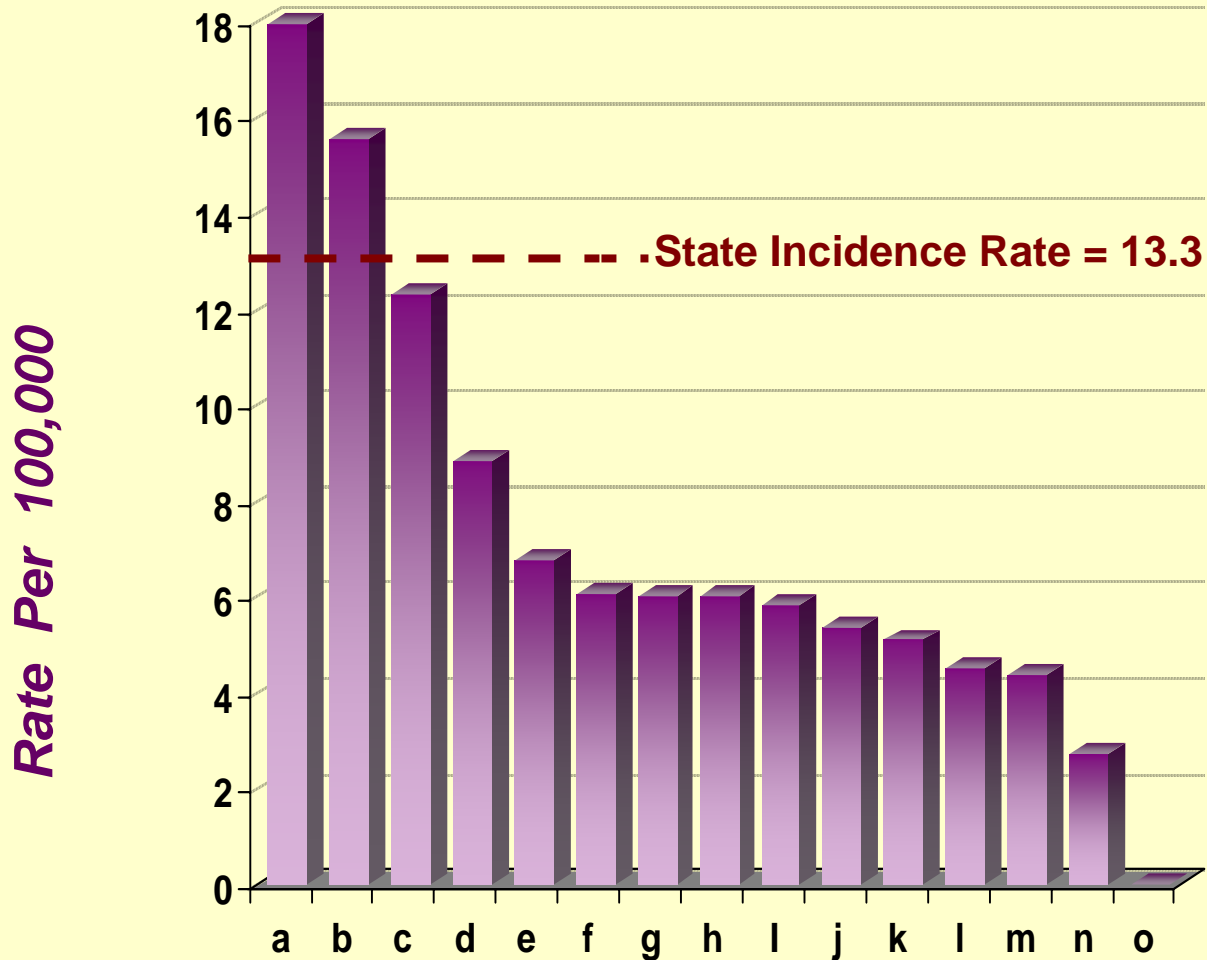
Prevalence: Current Estimated HIV/AIDS Rate, by County



- a- Pima
- b- Maricopa
- c- Pinal*
- d- La Paz
- e- Coconino
- f- Cochise
- g- Mohave
- h- Graham*
- i- Yavapai
- j- Ste Cruz
- k- Yuma
- l- Gila
- m- Navajo
- n- Apache
- o- Greenlee

* 30-50% of prevalent cases in Pinal and Graham counties are among incarcerated persons.

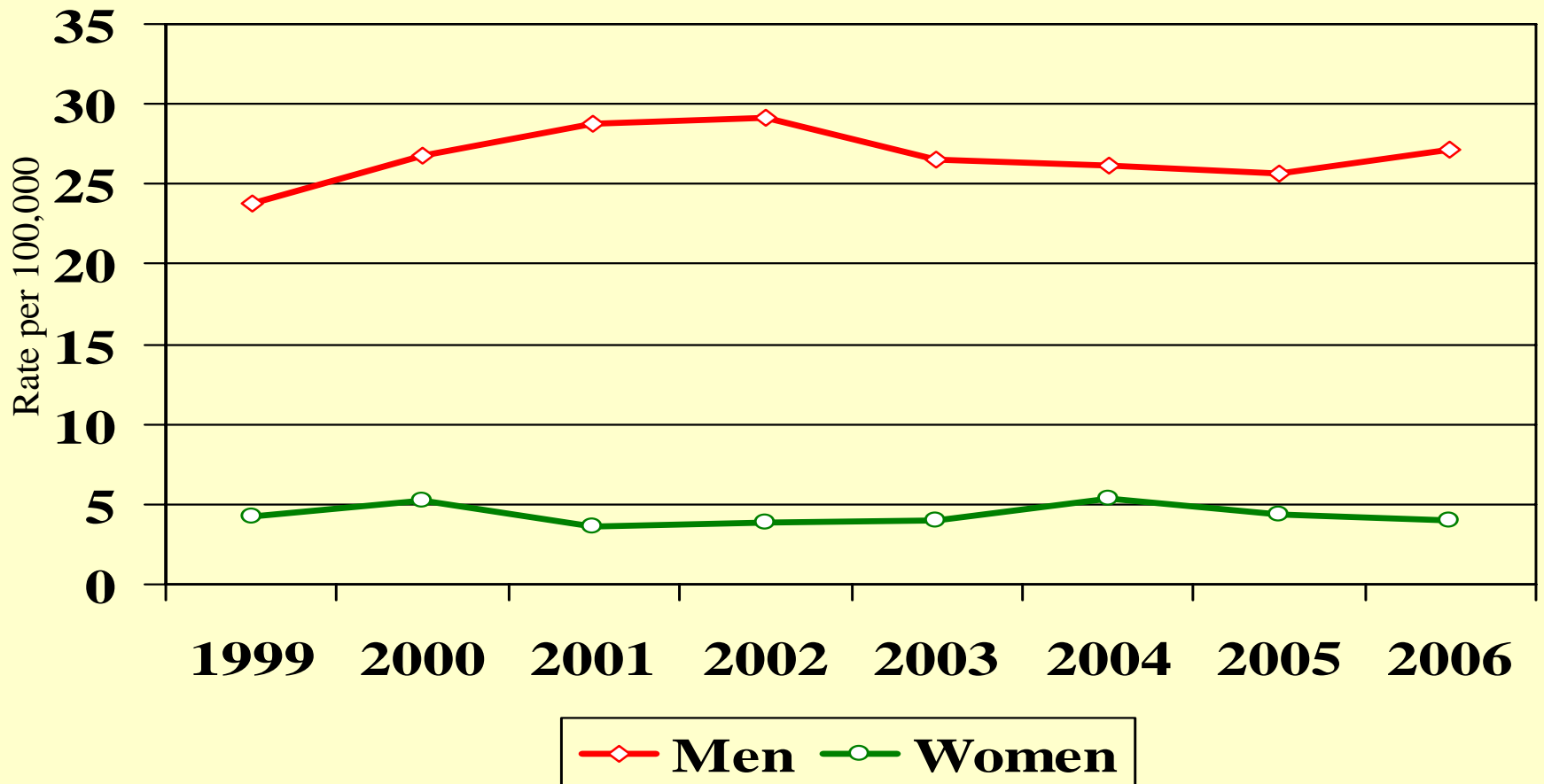
Incidence: Mean Annual Emergent HIV/AIDS Rate, 2001-2005, by County



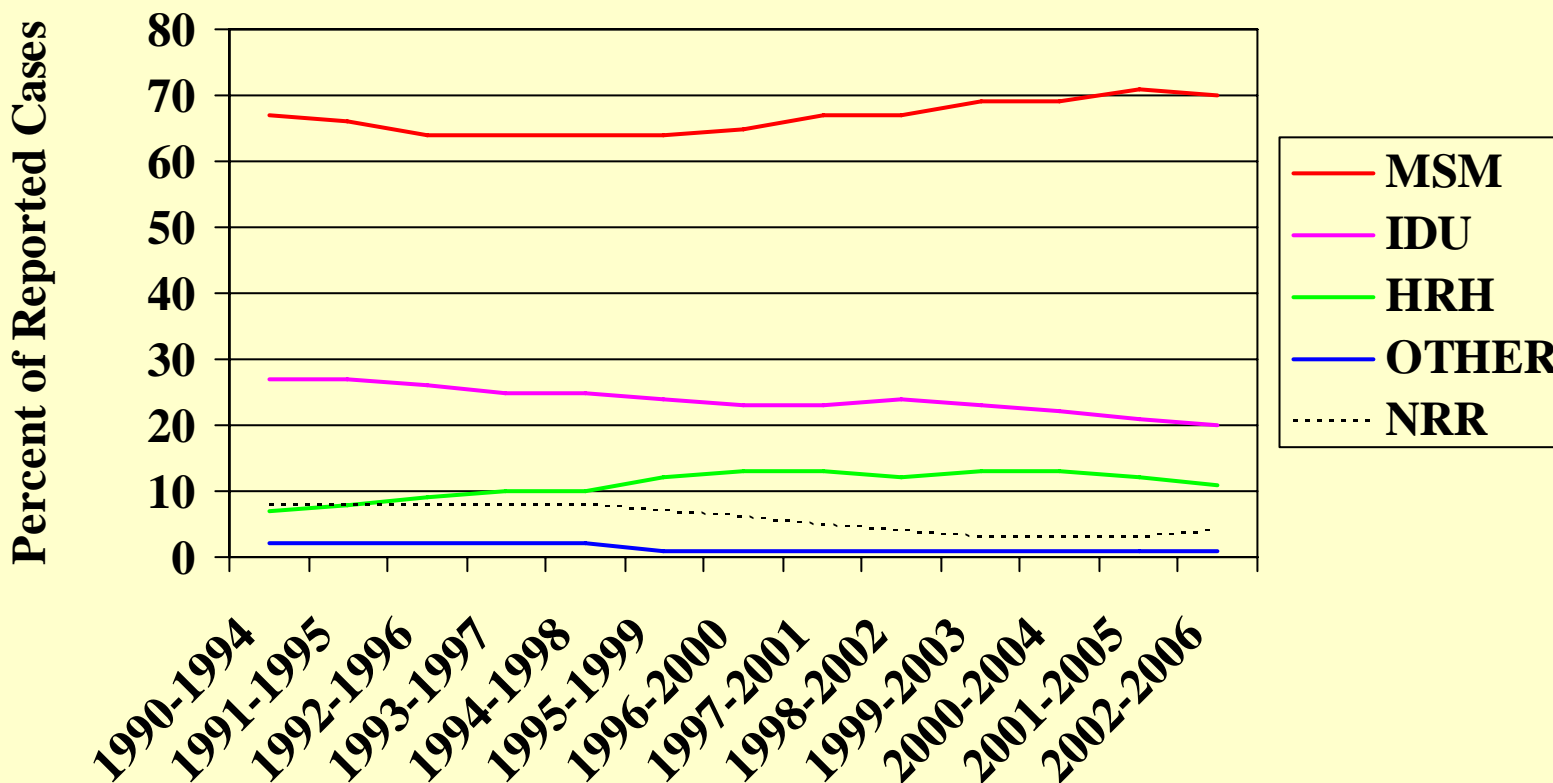
- a- Pinal*
- b- Maricopa
- c- Pima
- d- Coconino
- e- Navajo
- f- Apache
- g- Graham*
- h- La Paz
- i- Cochise
- j- Mohave
- k- Yavapai
- l- Yuma
- m- Ste Cruz
- n- Gila
- o- Greenlee

• 60% of emergent cases in Pinal and Graham counties during 1999-2003 were among incarcerated persons.

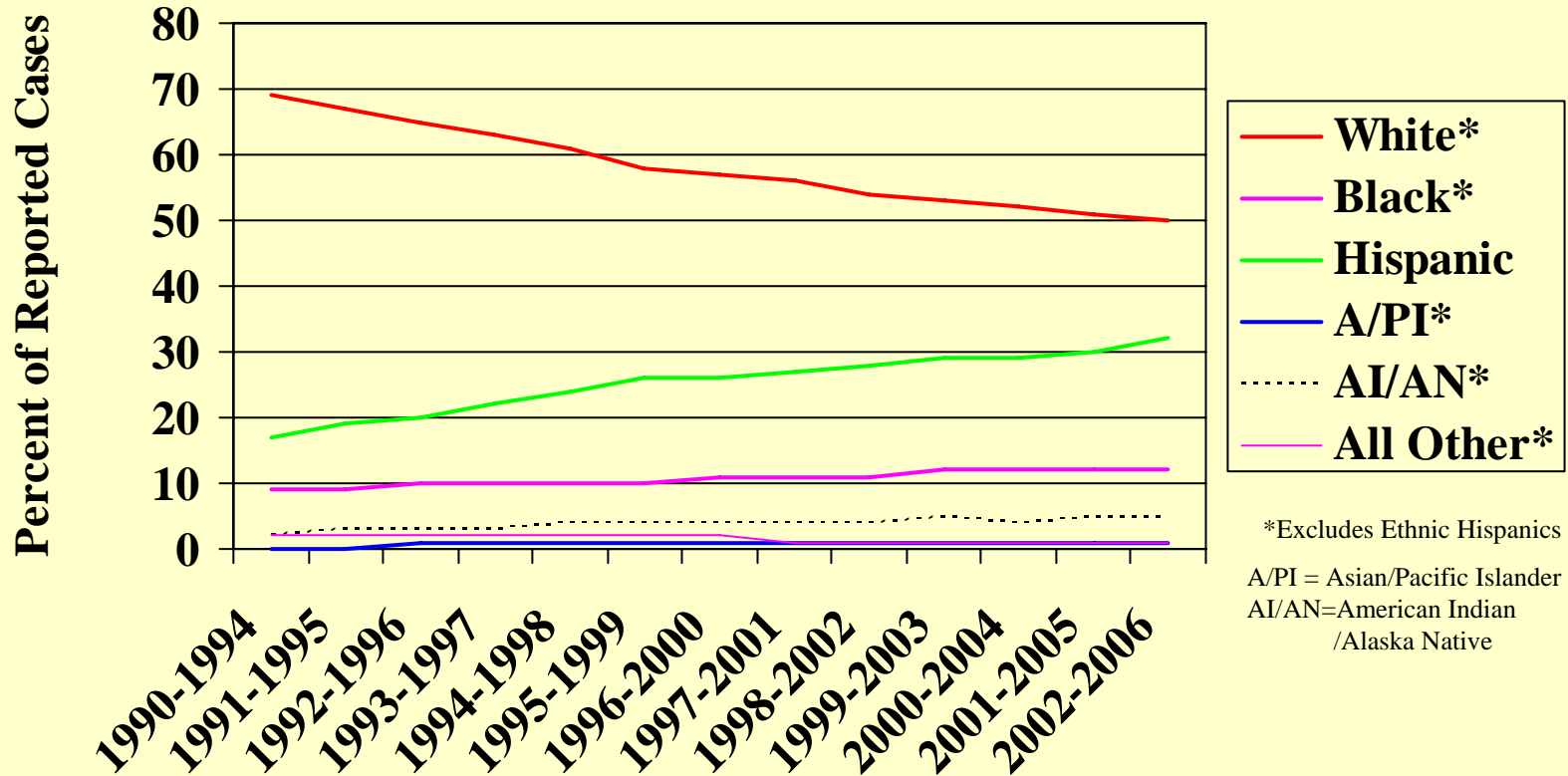
Phoenix EMA Emergent HIV/AIDS by Gender: 1999-2006



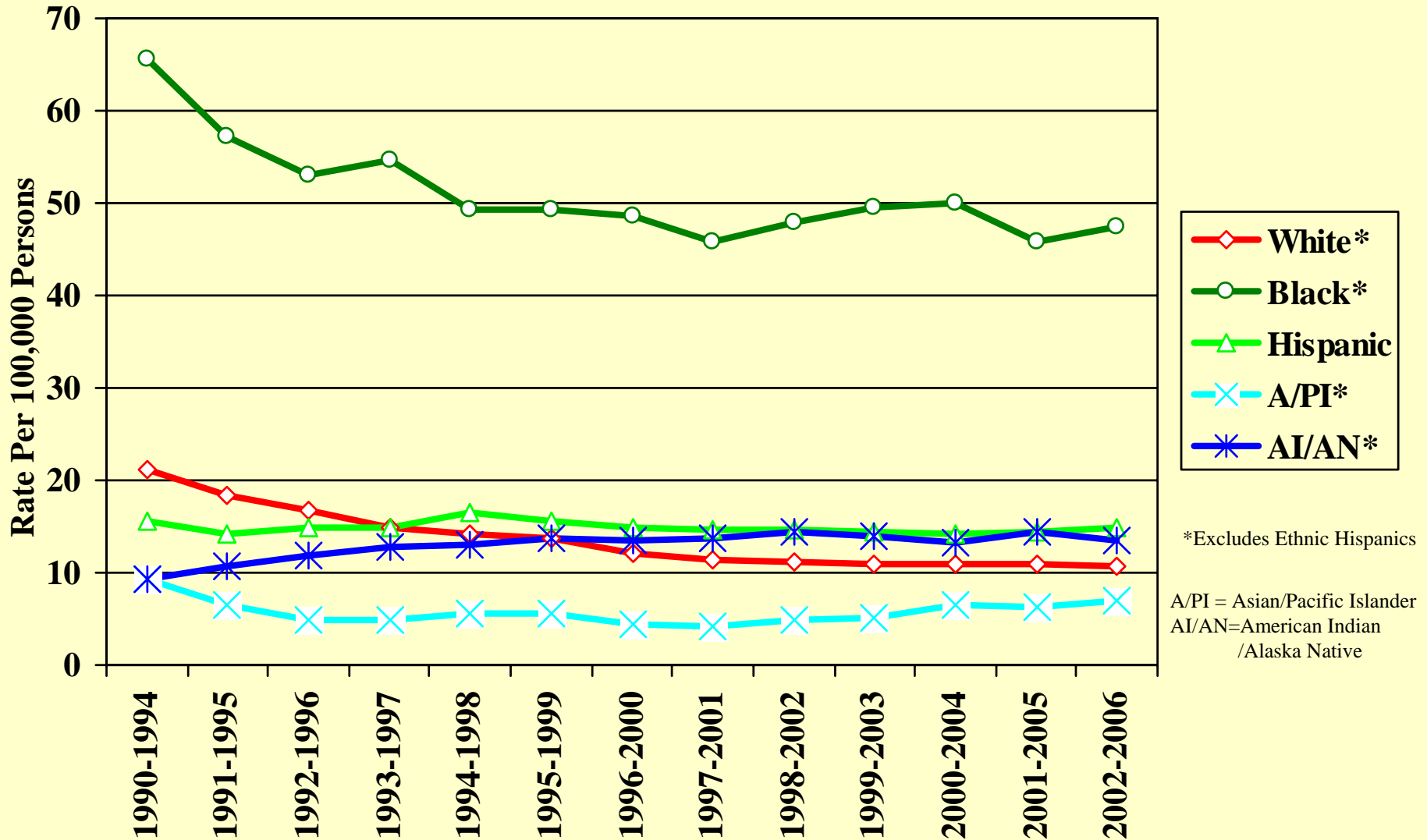
Relative Percentage of Emergent Cases by Reported Risk Behavior in Arizona: 1981-2006



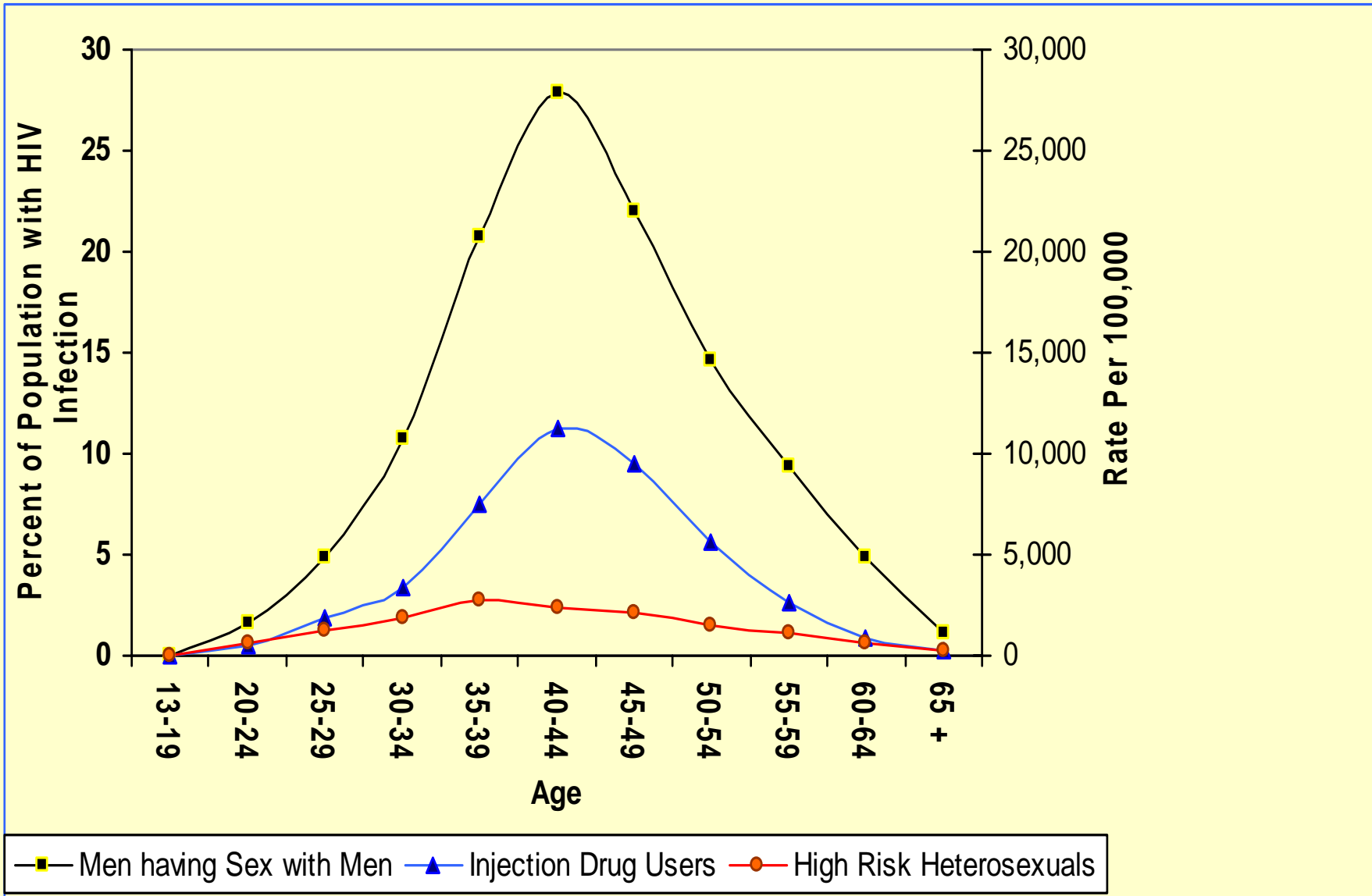
Relative Percentage of Emergent Cases by Race in Arizona: 1981-2006



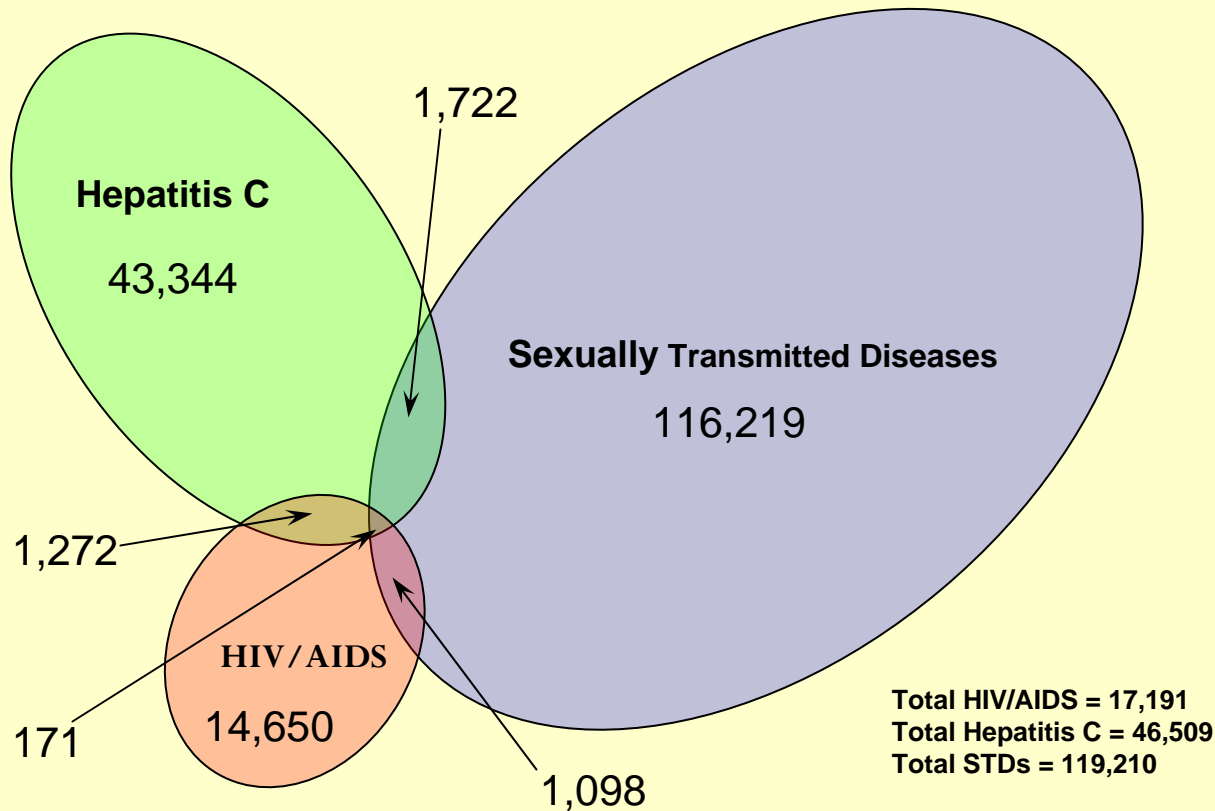
Arizona 5-Year Emergent HIV/AIDS Rate by Race/Ethnicity: 1990-2005



Arizona Percent/Rate Currently Infected with HIV Among Estimated Risk Group Population



Lifetime Co-morbidity Pattern Among Persons Diagnosed with HIV/AIDS, Hepatitis C, or a Sexually Transmitted Disease: Arizona 1998 - 2003



Reported HIV Infection Among Persons Reported with HepC:
(1,443/46,509)= 3.1%

Reported HIV Infection Among Persons Reported with any STD:
(1,269/119,210)=1.1%

A total of 178,476 persons reported in Arizona with any diagnosis of HIV/AIDS, Hepatitis C, or a sexually transmitted disease (STD) during the 1998-2003 time frame are included in this analysis. A lifetime diagnostic history of HIV, AIDS, Hepatitis C or an STD was constructed for persons in this analysis using all available data. The Venn diagram presents the lifetime co-morbidity configuration for this group of persons. Current reported HIV infection in Arizona is nearly 0.2%. Using this figure, the likelihood of HIV infection with a diagnosis of Hepatitis C are 15.5 times (3.1%/0.2%) greater, and a with a diagnosis of an STD are 5.5 times (1.1%/0.2%) greater than in the general population of Arizona.